 Instruction manual and warranty for Cafissimo Mini

Contents

- 1 Intended use and location
- 1 About these instructions
- 2 Safety warnings
- 4 At a glance
- 4 Control panel – button functions
- 5 Initial operation – prior to first use
- 6 Rinsing the machine
- 6 The finest aroma – the finest flavour
- 6 Using large / small cups or glasses
- 7 Brewing coffee
- 8 Adjusting the strength (amount) of the coffee
- 9 Standby mode
- 9 Cleaning
- 10 Descaling
- 11 For a long period of non-use
- 12 Problems / solutions
- 13 Disposal
- 13 Technical specifications
- 14 Warranty
- 14 Service Form

Intended use and location

The coffee machine has been devised for the following uses:

- Brewing filter coffee, caffè crema, espresso and tea with Tchibo capsules.

It has been designed for use in households or for similar applications such as

- in shops, offices or similar work areas,
- agricultural buildings,
- by customers in hotels, motels, bed and breakfast establishments or other places offering accommodation.

Set up the machine in a dry, indoor room. Avoid rooms with high humidity or high dust content. The machine is suitable for use at ambient temperatures of +10 to +40°C.

About these instructions

Read these safety warnings carefully and only use the machine as described in these instructions to avoid accidental injury or damage. Keep these instructions for future reference. If you pass the machine on to another person, remember to give them these instructions.

Symbols used in these instructions:



This symbol warns you of the danger of injury.



This symbol warns against the danger of injury caused by electricity.

Signal words:

DANGER warns you of potential severe injuries and danger to life.

WARNING warns you of injuries and severe material damage.

CAUTION warns you of minor injuries or damage.



This indicates additional information.

Safety warnings



DANGER to children and people with a restricted capability of operating appliances

- Children must not be allowed to play with the machine. Keep the machine and mains cord away from children under the age of 8.
- This machine can be used by children aged 8 and over or by people with reduced physical, sensory or mental capabilities, or who lack experience and/or knowledge, provided they are supervised or have been trained in the safe use of the machine and understand the potential dangers.
- Children must not be allowed to clean the machine unless they are over 8 years of age and supervised while doing so. This machine is maintenance-free.
- In order to make the front drawer, used capsule container and drip tray easier to insert in the machine, all these parts are equipped with magnets. If one of these built-in magnets should come loose, keep it away from children. In the case that magnets are swallowed or inhaled, seek medical advice immediately. Magnets connecting inside the body can lead to serious injuries.
- Set up the machine out of the reach of children.
- Keep the packaging material out of the reach of children. There is a risk of suffocation!

DANGER due to electricity

- Never immerse the coffee machine, mains plug or mains cord in water, as this could cause an electric shock. Never touch the mains plug with wet hands. Do not use the machine outdoors.
- Never leave the machine to operate unattended.
- Only connect the machine to a properly installed, grounded wall socket. The mains voltage must comply with the requirements stated in the machine's technical specifications.
- The mains cord must not be kinked or squeezed. Keep it away from sharp edges and sources of heat.
- Do not use the machine if the machine, mains cord or mains plug is damaged or if the machine has been dropped.
- Do not make any modifications to the machine, mains cord or other parts. Electrical appliances must only be repaired by qualified electricians, as improper repairs can cause considerable damage. Only have repairs carried out by a specialist workshop, or contact the customer care service.
- Remove the mains plug from the wall socket...
 - ... if a fault occurs,
 - ... if the machine will not be used for any length of time,
 - ... before cleaning the machine.To unplug, always pull on the mains plug, not the cord.
- To disconnect the machine fully from the mains, unplug the mains plug from the wall socket.

WARNING - risk of scalds/burns

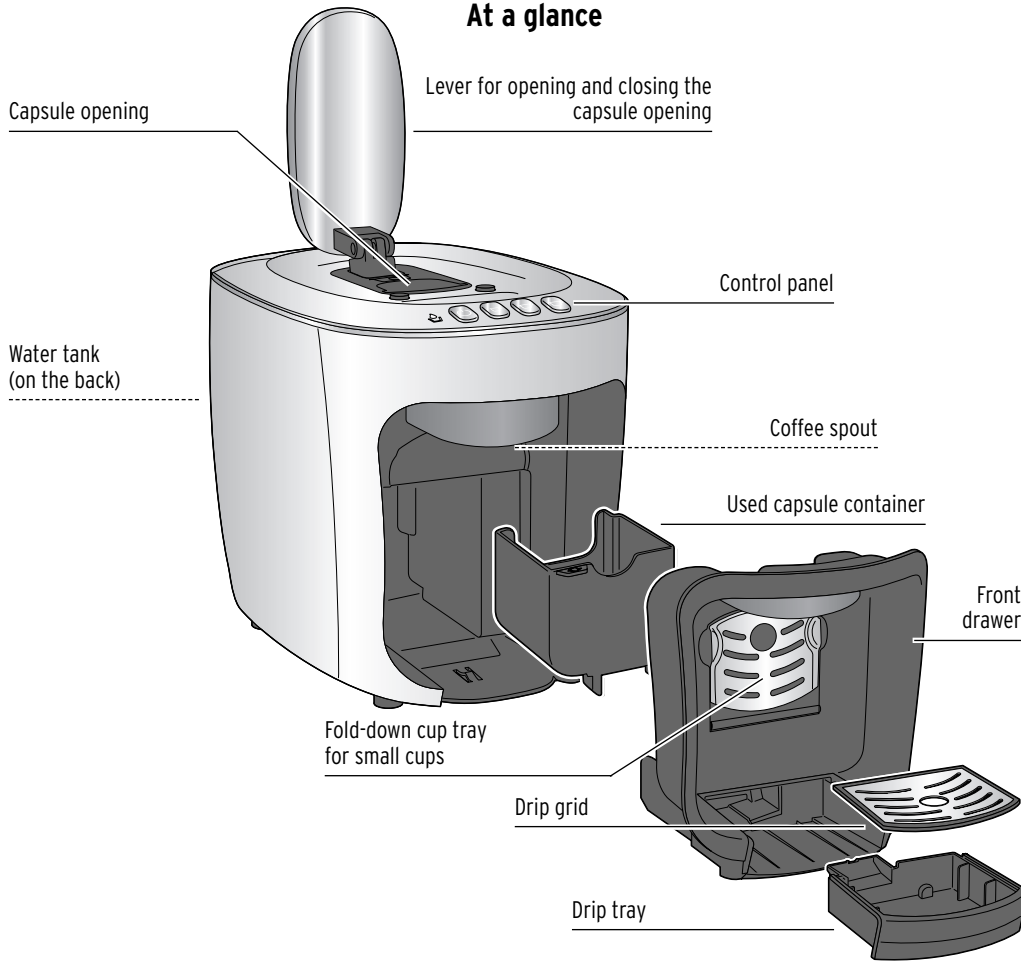
- Do not touch the coffee spout during or immediately after use. Avoid contact with coffee being dispensed from the spout.
- Do not raise the lever while the machine is being used. Keep the capsule opening closed and do not pull out the used capsule container.

CAUTION - risk of injuries or material damage

- **Use only original Tchibo Cafissimo capsules.** Neither use capsules from other manufacturers, nor damaged or misshapen capsules, and never fill capsules or the machine with ground coffee or instant coffee, as this would damage the machine. In these cases, any necessary repairs would not be covered by the warranty.
- Only use the machine with the used capsule container and drip grid inserted.
- Always pour fresh, cold tap or other drinking water into the water tank. Do not use carbonated mineral water or any other liquids.
- Descale the machine as soon as the machine indicates that this is necessary.
- The capsule opening contains two capsule punchers. These punchers pierce both sides of the capsule when the lever is pressed down. Never reach into the capsule opening. Keep your fingers and any objects away from the capsule opening as you fold down the lever.
- Do not lift the machine up by the lever. To move the machine, hold it by the outer casing.

- Place the machine on a solid, level surface that is well illuminated and resistant to water and heat.
- To ensure that the casing does not melt, do not place the machine on a hob or immediately next to a hot oven, radiator or anything similar.
- Route the mains cord in such a way that it cannot be tripped over. Do not let the mains cord hang down from the surface the machine is put on so that the machine cannot be pulled down by it.
- Keep all cards with magnetic strips, such as credit cards, debit cards, etc. away from the front drawer, used capsule container and the drip tray, as well as all built-in magnets. The cards could become damaged. Also keep magnetic memory storage media and all devices that are affected by magnetism or may sustain functional impairment away from the machine.
- The machine is equipped with non-slip feet. Work surfaces often have varnished or plastic finishes and are treated with a variety of care products. Some of these may contain substances that react adversely to the non-slip feet and soften them. If necessary, place a non-slip mat under the machine.
- The machine must not be exposed to temperatures below 4°C. Residual water in the heating system could freeze and cause damage.

At a glance



Control panel – button functions

The colours of the buttons are visible only when the machine is switched on.



Indicator light

- Flashes red (**water tank empty**)
- Lights up yellow (**machine needs to be descaled**)



On/Off switch for machine



Making espresso

(small white cup for black capsule)



Making caffè crema

(yellow cup for yellow capsule)

Making tea

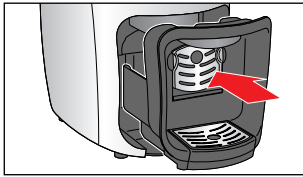
(Cafissimo tea capsules)



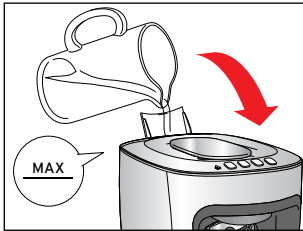
Making filter coffee

(blue cup for blue capsule)

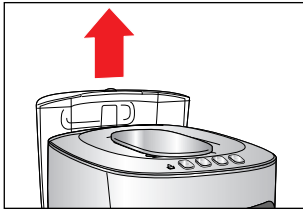
Initial operation – prior to first use



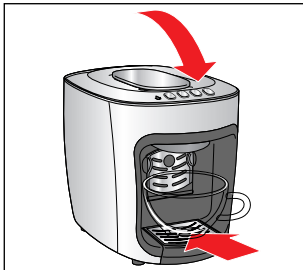
1. Make sure that the used capsule container is correctly inserted in the front drawer. The front drawer needs to be pushed in all the way and the drip tray correctly inserted.



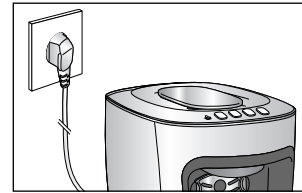
2. Fill the water tank with fresh, cold tap water or drinking water up to the MAX mark.
 - To do so, either leave the water tank in the machine, open the flap on top of the water tank and pour the water in through the tank's filling inlet, or...



- ... pull the water tank straight up and out of the machine and then fill it with water. When you reinsert the water tank into the machine, push it down as far as it will go.



3. The lever must be in the down position. Fold it down if necessary.
4. Place an empty cup beneath the coffee spout.



5. Plug the mains plug into an easily accessible wall socket.



6. Press the On/Off button. A short signal will sound. The On/Off button and coffee buttons flash.



7. **Press the yellow coffee button.** The pump starts to operate. As soon as the pipes are filled with water the pump stops automatically. A small quantity of water runs into the cup beneath the spout.

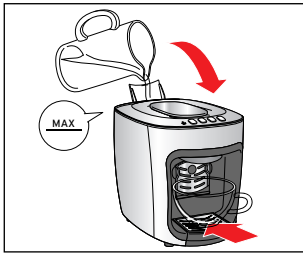


The On/Off button and coffee buttons flash and the machine heats up to brew coffee.

8. Pour away the water that is in the cup and rinse the machine twice as described in the section "Rinsing the machine". The machine is then ready for use.

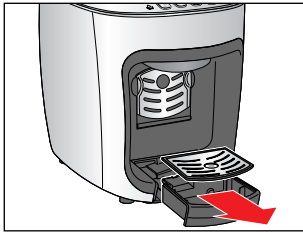
Rinsing the machine

After switching the machine on for the first time or if you have not used the machine for longer than two days, rinse the machine by allowing two cups of water to flow through it (without a capsule).



1. Fill the water tank with fresh, cold tap water or drinking water up to the MAX mark.
2. Place an empty cup beneath the coffee spout.
3. The lever must be in the down position. Fold it down if necessary.
4. Switch the machine on.
5. Press the yellow coffee button as soon as all buttons remain permanently lit. The pump will flush water through the pipes to be dispensed into the cup below.

6. Pour the water away.
7. Repeat steps 2 to 6.
8. Finally, empty the drip tray.



To do so, pull out the drip tray and remove the drip grid. Empty the drip tray.

9. Set the drip grid back in place and reinsert the drip tray in the machine.

The finest aroma – the finest flavour

One capsule per cup

Each capsule is a single portion for one cup.

Full aroma

Only insert a capsule when you intend to use the machine. The capsule is pierced as it is inserted. If it is not used immediately, the aroma will fade.

Preheating the cup

Fill the cup with hot water and then pour it away shortly before using the cup. This helps espresso, caffè crema and filter coffee taste their best.

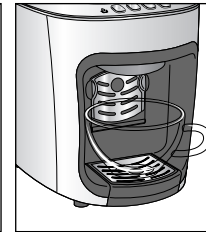
Coffee strength

Adjust the strength of the coffee to suit your personal taste by changing the quantity of water. This is very easy to do, and is described in the section "Adjusting the strength (amount) of the coffee".

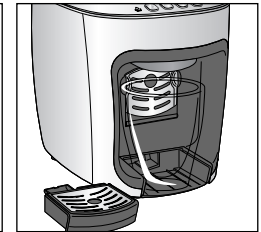
Using large / small cups or glasses



For small cups, fold down the cup tray as illustrated.

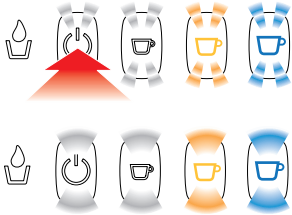


For large cups, fold up the cup tray.



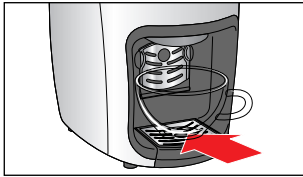
For glasses or large mugs, fold up the cup tray and remove the drip tray.

Brewing coffee

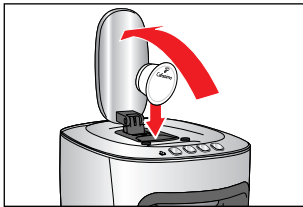


1. Press the On/Off button to switch on the machine.
The On/Off button and coffee buttons flash and the machine starts to heat up.

The machine is ready for operation once all the buttons remain permanently lit. A short signal will also sound.

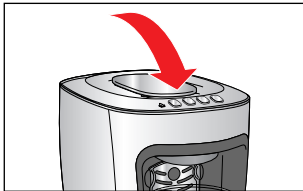


2. Place an empty cup beneath the coffee spout.



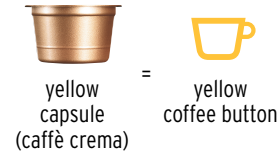
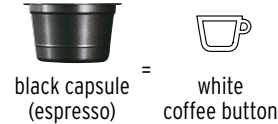
3. Fold back the lever as far as it will go and insert a capsule as illustrated with the lid facing forwards.

The capsule must be intact:
Do not pierce it and **do not** remove the capsule lid or insert a misshapen capsule!



4. Fold the lever fully down.
This action pierces the base and lid of the capsule.

5. Press the coffee button that corresponds to the capsule you have inserted.
The brewing process starts and stops automatically.

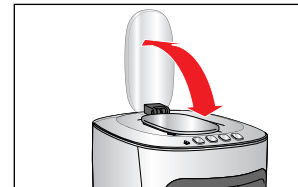


i As is the case with professional espresso machines, for espresso and caffè crema capsules a small quantity of coffee is pre-brewed. This enhances the aroma. This process can be identified by the short pause at the beginning of the brewing process. Filter coffee is prepared without a pre-brewing process, just like with standard coffee machines.

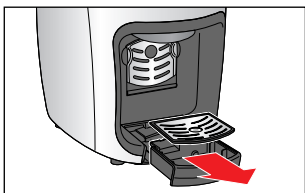
Tip: You can adjust the strength of the coffee by adjusting the quantity of water. Refer to the section “Adjusting the strength (amount) of the coffee” for information on how to do this.

Default settings (amounts are approximate):
Espresso 40 ml | **Caffè crema** 125 ml | **Filter coffee** 125 ml

- ▷ If you would like to stop the brewing process prematurely, press the same coffee button again while brewing.



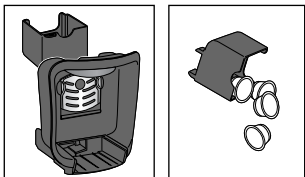
6. Before removing the coffee cup, fold back the lever as far as it will go, so that the capsule falls into the used capsule container.
7. Then fold the lever down again so that the capsule opening is closed.



8. After every use, pull out the drip tray to remove it and pour out any excess water. Due to how the machine operates, a small amount of water and coffee grounds collect in the drip tray after each coffee is brewed.



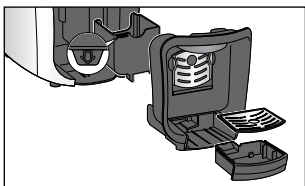
9. Pull the front drawer out by the grip as illustrated.



10. Remove the used capsule container.
11. Empty the used capsule container daily or whenever it is full. Approx. 4 capsules fit inside.



Do not leave a used capsule in the capsule opening. Empty the used capsule drawer daily. In case you forget a capsule in the machine for a few days, rinse the machine as described in the section "Rinsing the machine".



12. Then insert all parts back into the machine. Make sure that the used capsule container is positioned correctly when reinserting it - the arrow on the container should be pointing towards the front drawer.

Adjusting the strength (amount) of the coffee

Adjust the strength of the coffee to suit your personal taste by adjusting the quantity of water. You can do this for one single brewing procedure or save the setting.

Adjusting the strength for the current brewing procedure (without saving the setting)

- ▷ If the coffee is **too weak**, you can stop the water flow prematurely by pressing the flashing coffee button.
- ▷ If the coffee is **too strong**, start the brewing procedure again without inserting a new capsule. Press the button as soon as sufficient water has run through.

Default settings (amounts are approximate):

Espresso 40 ml | **Caffè crema** 125 ml | **Filter coffee** 125 ml

The water quantity can be set between approx. 30 and 250 ml.

Setting the strength permanently (saving the setting)

You can change the factory settings for the water quantity permanently. This enables you to make your favourite coffee every time at exactly the strength you prefer. You can customise the setting for each type of coffee: espresso (white cup), caffè crema (yellow cup) and filter coffee (blue cup).

1. Proceed in the same way as for brewing coffee: Fill the water tank, insert a capsule and place a cup beneath the spout.
2. Press and hold the relevant coffee button until the required quantity of coffee has been dispensed into the cup.
3. When you release the button, the machine will save that quantity.

If the settings are not to your taste, simply repeat the procedure to change them again.

Cleaning

Restoring the factory settings

You can restore the original settings for the water quantity.



1. Press the On/Off button to switch off the machine.



2. Press and hold the left and right coffee buttons and then press the On/Off button.




The three coffee buttons flash and a signal will sound in confirmation.

3. Release the buttons. The factory settings for the water quantity have been restored.

Standby mode

If no button is pressed for about nine minutes, the machine will automatically switch to standby mode. The On/Off button and coffee buttons will go out. The machine will then use very little energy. This is both a safety function and a way to save energy. However, you should still always switch the machine off using the On/Off button.

 To disconnect the machine completely from the mains power, remove the mains plug from the wall socket.



▷ To switch the machine back on, simply press the On/Off button.



DANGER - risk of fatal electric shock

- Remove the mains plug from the wall socket before cleaning the device.
- Never immerse the machine, mains plug or mains cord in water or any other liquids.
- Do not clean the machine with a water jet. Clean it only as described in the following instructions.

CAUTION - material damage

Do not use any caustic, aggressive or abrasive products for cleaning.

Cleaning the casing

- ▷ Wipe the casing with a soft, damp cloth.
- ▷ Also wipe the compartment for the used capsule container with a soft, damp cloth as required.

Rinsing the water tank daily

- ▷ Rinse out the water tank daily under running water. This will prevent limescale deposits or other particles clogging the filter on the bottom of the water tank.

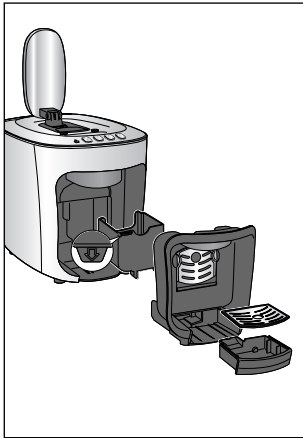
Thoroughly cleaning the water tank weekly

The water tank should be cleaned once a week.

- ▷ Wash the water tank in warm water with a mild washing-up liquid. Rinse it out thoroughly under running water and dry it. The tank is not dishwasher-safe.

Descaling

Cleaning the used capsule container and drip tray/grid



1. Pull out the drip tray to remove it.
2. Remove the drip grid from the drip tray and empty the drip tray.
3. Pull out the front drawer and remove the used capsule container.
4. Empty the capsule container.
5. Wash all parts using a washing-up liquid. Dry all parts thoroughly. All parts (except for the machine itself) can also be cleaned in the dishwasher.
6. Then reinsert all parts in the machine.

Cleaning the cup tray

The cup tray can be removed for easy cleaning.



1. Fold down the cup tray.
2. Remove the cup tray by pulling the right side of the tray straight to the front.

3. Clean the cup tray by hand or in the dishwasher and then dry it thoroughly.



4. Insert the left side of the cup tray into the holder and then press the right side - as illustrated - into the guide slot.



If the indicator light is lit up yellow, the machine needs to be descaled. Do this within the next couple of days. Do not wait any longer, otherwise so much limescale may collect that a descaling agent will no longer have any effect. **Descaling takes about 30 minutes.**



The descaling process cannot be interrupted. If an interruption nevertheless occurs during the descaling process (e.g. due to a power outage), it must be completed the next time the machine is switched on. The machine will not be able to brew coffee again until the process is completed.

CAUTION – damage to the machine due to limescale deposits

- **Descale the machine as soon as the machine indicates that this is necessary** (after approx. 50 litres). This increases its service life and saves energy.
- Do not use any descaling agents made on the basis of formic acid.
- Use a standard, liquid, descaling agent suitable for coffee and espresso machines. Other agents may damage materials in the machine and/or have no effect.

Tip: Descaling agent: We recommend durgol® swiss espresso®, which is available from any Tchibo branch and from specialist retailers.

To descale the machine, proceed as follows:



1. Press the On/Off button to switch off the machine.

Using durgol® swiss espresso®:

- ▷ Take the water tank out of the machine and pour one portion (125 ml) of durgol® swiss espresso® into the empty water tank.

Important: Add water **up to the MAX mark** and reinsert the tank.

- ▷ If you are using a different descaling agent, read the manufacturer's instructions. **Important:** Add descaling solution **up to the MAX mark** and reinsert the tank.
- 2. Fold down the lever.
- 3. Remove the drip tray if necessary.
- 4. Place a container with a capacity of at least 250 ml under the coffee spout.

You will need to empty this container several times during the descaling phase.



- 5. Press and hold the On/Off button for approx. 5 seconds.



- 6. Release the button. The On/Off button and indicator light will flash.
- 7. Press the On/Off button again to start descaling. The descaling phase begins. The white coffee button will flash.

The machine pumps descaling solution into the pipes several times at 5-minute intervals. Each time about 125 ml is dispensed into the container.

- 8. Pour out the dispensed water each time to ensure that the container does not overflow.



Once finished, the white coffee button will go out and the yellow coffee button lights up. Two signals will sound.

- 9. Pull the water tank straight up and out of the machine. Thoroughly clean the water tank as described in the chapter "Cleaning" / section "Thoroughly cleaning the water tank weekly". A rinsing phase will now start.

Rinsing phase

- 10. **Important:** For the rinsing phase, fill the water tank **up to the MAX mark** with cold tap water. Otherwise the machine cannot complete the rinsing phase.



- 11. Place an empty container (at least 250 ml) beneath the coffee spout.
- 12. Press the yellow coffee button to start rinsing. The On/Off button lights up and the middle coffee button flashes.

- 13. Approx. 600 ml water will be rinsed through the system. Keep an eye on the container and empty it before it overflows.

- 14. To finish, three signals will sound, all buttons will flash 3 times, the indicator light flashes red 3 times and the machine will automatically switch to standby mode. The On/Off button, coffee buttons and indicator light will go out. The descaling process is completed.

For a long period of non-use

If you will not be using the machine for a prolonged period, e.g. when you go on holiday, we recommend for reasons of hygiene that you should drain the water from the machine's pipes. The machine must be warmed up before doing so:



- 1. Press the On/Off button to switch the machine on. The On/Off button and the coffee buttons flash and the machine starts heating up.



Once all the buttons stay lit up...



2. ... press the On/Off button to switch the machine off again.

3. Place a container under the coffee spout.
 4. Fold down the lever if necessary.
 5. Empty the water tank and reinsert it.



6. Press and hold the three coffee buttons simultaneously and then press the On/Off button in addition.

7. Release the buttons again.

The On/Off button flashes red.

The pump transports the remaining water out of the pipes of the machine. It stops automatically as soon as there is no more water inside. The residual water runs into the container beneath the spout.

A signal sounds and the machine automatically switches into standby mode.



8. Empty the drip tray.

When you wish to use the machine again at a later time, proceed as described in the section "Initial operation - prior to first use".

Problems / solutions

The indicator light is flashing red and a signal is sounding.

Is the water tank empty?

- ▷ Fill the water tank with fresh water.
- ▷ Press one of the coffee buttons. The pump starts to operate. As soon as the pipes are filled with water the pump stops automatically.
- ▷ When the coffee buttons remain permanently lit, the machine is ready for use again.

Has the lever been raised during the brewing procedure?

This will immediately stop the brewing procedure.

- ▷ Fold down the lever again.
- ▷ Press one of the coffee buttons to switch off the acoustic signal.

There are coffee grounds in the cup.

A small residue of coffee grounds always remains at the bottom of the cup.

This is a feature of the system and is not a fault.

The coffee is not hot enough.

Especially in the case of espresso, the quantity of coffee is so small compared with the size of the cup that it cools down quickly. Preheat the cup by filling it with hot water and pouring it away shortly before using the cup.

The indicator light lights up yellow permanently.

The machine needs to be descaled.

Do this within the next couple of days. Do not wait any longer, otherwise so much limescale may collect that a descaling agent will no longer have any effect. A self-induced defect of this kind will not be covered by the warranty. Proceed as described in the section "Descaling".

| | |
|---|---|
| Water is dripping out of the coffee spout. | The water in the system expands as the machine heats up and as a result a little water drips out of the coffee spout. |
| It is not possible to press down the lever. | Check whether the used capsule container is full. Empty it if necessary. If a capsule is trapped in the compartment, fold the lever fully back and press the capsule through from the top to the bottom. Do not reinsert a capsule if it is misshapen. |

Disposal

Dispose of the **packaging** in the proper manner. Make use of the local facilities provided for collecting paper, cardboard and lightweight packaging.



Appliances marked with this symbol must not be disposed of along with household refuse!

You are legally bound to dispose of old appliances separately from household waste. Information about where old appliances can be disposed of free of charge is available from your local authorities.

Technical specifications

| | |
|------------------------------------|--|
| Type / Model: | Cafissimo 313212 |
| Product number: | see "Warranty" section |
| Mains voltage: | 220–240 V ~ 50 Hz |
| Power: | 1500 watts |
| Power consumption when turned off: | 0.04 watts |
| Automatic switch-off: | approx. 9 minutes |
| Protection class: | I |
| Pump pressure: | max. 15 bar |
| Sound pressure level: | <70dB(A) |
| Ambient temperature: | +10 to +40°C |
| Preset brew quantities: | Filter coffee 125 ml Caffè crema 125 ml Espresso 40 ml |
| Made exclusively for: | Tchibo GmbH, Überseering 18, 22297 Hamburg, Germany |



Warranty

We grant a **36-month warranty** from the date of purchase.

Tchibo GmbH, Überseering 18, 22297 Hamburg, Germany

We will remedy all defects in workmanship or materials within the warranty period. In order for the warranty to be granted, all warranty claims must be accompanied by proof of purchase from Tchibo or from an authorised Tchibo distribution partner. This warranty is only valid within the EU, Switzerland and Turkey.

If, contrary to our expectations, a defect is found, please contact our customer care service at the following e-mail address:

service@tchibo.de

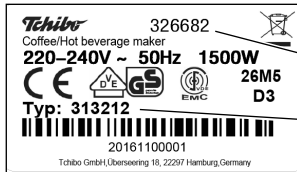
Our customer consultants will be pleased to advise you on further procedure.

Damage due to improper use, failure to decalcify as well as worn parts and consumables, are not covered by the warranty.

Please have the product number at hand in case of any queries.

This warranty does not restrict statutory warranty rights.

Product number



Product number

Type / Model

You can find your Cafissimo machine's product number on the type plate on the bottom of the casing.

Before laying the Cafissimo on its side, remove the water tank and pull out the front drawer with the used capsule container and drip tray. Lay a cloth or mat underneath the machine to protect the surface from remaining water and coffee that may leak out.

Service Form

Please fill out the form in capital letters and send it along with the product.

Product number

(please fill in)

Surname, first name

Street, no.

Postcode, city

Country

Tel. (daytime)

Fault/Defect

Date of purchase

Date/Signature

(You can find your Cafissimo machine's product number on the type plate on the bottom of the casing.)

Return checklist:

- Package the product well.
- Secure any loose parts.
- Copy and include the proof of purchase.
- Remove any used capsules.

If not covered by the warranty* :

(please tick box)

- Please send back the coffee machine unrepai red.
- Please send a cost estimate.

*You will be responsible for the cost of returning any products which are not covered by the warranty.

