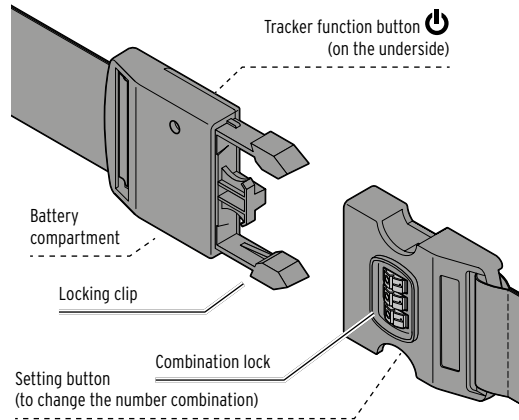


Suitcase strap with integrated tracker

en Instructions for use



Read the safety warnings carefully and only use the product as described in these instructions to avoid accidental injury or damage. Keep these instructions for future reference. If you give this product to another person, remember to also include these instructions. This product has been designed to be compatible with the Apple® "Find My" function and **only works with Apple® devices**. The product is designed for private use and is not suitable for commercial purposes. This product is suitable for sale and use in the following countries: Germany, Austria, Switzerland, Czech Republic, Poland, Slovakia, Hungary.

Swallowing batteries can be fatal. This product is equipped with a coin battery. Swallowing a coin battery can cause severe internal chemical burns and even death within 2 hours. Keep both new and used batteries out of the reach of children. If the battery compartment does not close properly, discontinue use of the product and keep it out of the reach of children. If you think that a battery has been swallowed or has got into the body in any other way, seek medical advice immediately.

For your safety

• Keep small swallowable parts and packaging materials out of the reach of children. They pose several risks, including the risk of suffocation/choking!

The product contains a lithium battery (coin battery). There is a risk of leakage, gas emissions, explosion and fire.

- Warning! Lithium batteries can explode if inserted incorrectly. Therefore, ensure correct polarity (+/-) when inserting batteries. Use only batteries of the same or of equivalent type (see the technical specifications).
- Single-use batteries must not be charged, taken apart or crushed, thrown into fire or a hot oven or short-circuited. Do not modify and/or deform/heat/dismantle single-use batteries. Do not allow damaged batteries to come into contact with water.
- Single-use batteries must not be overdischarged. Keep unused batteries in the original packaging. Unpacked batteries (either new or partially/fully used) must be stored in an orderly fashion so that their contacts cannot touch each other. Also keep them away from metal objects.

• Batteries that are exposed to intense heat, direct sunlight, extremely low air pressure (e.g. at high altitudes) or extreme temperatures may explode or leak flammable liquids or gases. Therefore protect batteries from excessive heat and direct sunlight as well as extreme air pressure and temperatures.

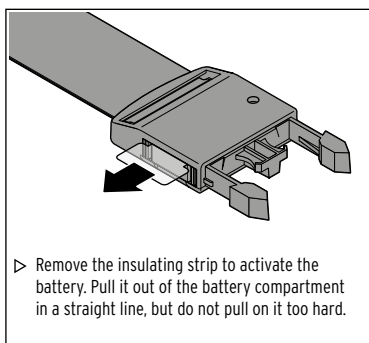
- Remove the battery when it is flat or if you do not intend to use the product for a longer period of time. This will help prevent damage caused by leakage.
- If a battery has leaked, avoid contact with skin, eyes and mucous membranes. If necessary, rinse the affected areas with water and consult a doctor immediately.
- Do not use the product if it shows any signs of damage. Do not attempt to repair the product yourself. Do not make any modifications to the product.
- Do not immerse the product in water and protect it from moisture.
- Do not place containers filled with liquid (e.g., drinks bottles, coffee cups) directly next to or on top of the product.
- Do not place any naked flames such as burning candles near the product.

- Protect the product from impacts, falls, dust, moisture, direct sunlight and extreme temperatures.
- Keep the product away from strong electromagnetic radiation, as this can impair or destroy the function of the product.
- Do not use any caustic, aggressive or abrasive products for cleaning.

Activating/replacing the tracker battery

Activating the tracker battery

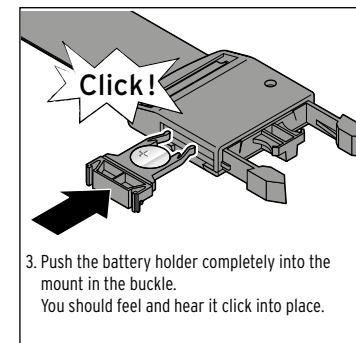
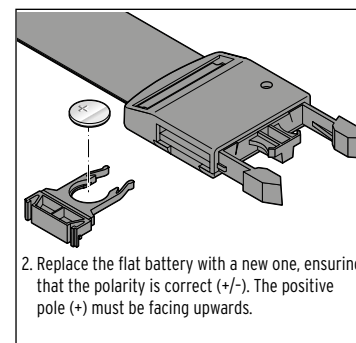
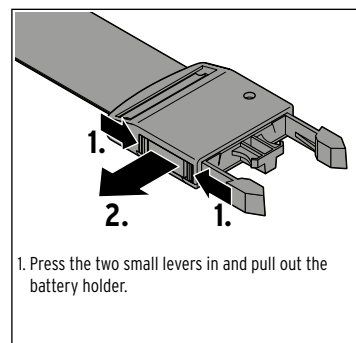
The product comes with the battery already inserted.



Replacing the battery

When a battery change becomes necessary, you will receive an appropriate notification via the "Find My" app. You need a battery of type CR2032, 3 V. The battery compartment is located on the side of the buckle.

Touching the battery with bare hands may cause contamination on the contacts, and this may have an insulating effect, among other consequences. You should therefore use a dry, soft cloth to insert the battery.



Connecting with your Apple® account

Switching the tracker on and off

- ▷ Press the function button ... once briefly to switch the tracker on. You will hear various different beeps depending on whether or not the tracker was linked.
- ... twice briefly and then one long press (approx. 3 seconds) to switch the tracker off. Two short quiet beeps will sound.
- ▷ To check whether the tracker is currently switched on, double-click the function button : if the tracker was already switched on, you will hear a short beep. If the tracker was switched off, you will hear a long beep and the tracker is then switched on.

Settings on the Apple® device

- Important: The tracker can only be connected to one Apple account at a time. If you want to connect it to a different account, you must first remove it from the app of the previous account.
1. Turn on **Bluetooth**® on your mobile device.
 2. Make sure the latest iOS update is installed on your mobile device.
 3. Allow the "Find My" app to send notifications.
 4. Switch the tracker on.
 5. In the "Find My" app, navigate to "Items" --> + --> "Add Other Item".
 6. Once your tracker is detected, tap "Connect".
 7. Enter a suitable name and an emoji for the tracker. The emoji will then be displayed later in the "Map" app.
 8. Tap "Continue".
 9. You must confirm that you want to connect the tracker to your Apple ID. Tap "Accept".
 10. A map with the selected emoji is displayed. Tap "Finish".
- Your tracker is now ready for use.

Tracking

Search for trackers in the immediate vicinity (max. 20 m)

1. Open the "Find My" app on your mobile device and select "Items".
2. Search for the tracker in the list and tap "Play Sound". If the tracker is within **Bluetooth**® range (max. 20 m), it will emit a series of beeps. If the tracker is further away, it remains silent.
3. Tap "Stop" to turn off the beeps.

Displaying the last known location of the tracker

1. Open the "Find My" app and select "Items".
2. Tap the tracker in the list.
3. A map is displayed showing the selected emoji at the last known location. You can display directions for getting there by tapping on "Directions" and then "Go".
4. When you have found your tracker, you can stop the directions.

Receiving a notification if you leave the tracker behind

1. Open the "Find My" app and select "Items".
2. Tap the tracker in the list.
3. Scroll down if necessary: "Notify When Left Behind" appears under "Notifications". If required, switch the function to "On".

You will receive a notification from the app when you move out of range of the tracker.

Receiving notifications when the lost tracker is found

1. Open the "Find My" app and select "Items".
2. Tap the tracker in the list.
3. Scroll down if necessary: Under "Lost Item", tap "Show Contact Information".
4. Information on this mode is displayed. Tap "Continue".
5. Enter a contact telephone number or email and tap "Next".
6. Tap "Activate".

You will receive a message as soon as the tracker has been found.

If "Lost Item" mode is active, the tracker cannot connect to another Apple device.

▷ If you receive a message that the tracker has been found, deactivate the "Lost Item" mode. The tracker is then connected again.

Removing the tracker from the app

1. Run the "Find My" app and select "Items".
2. Tap the tracker in the list.
3. If it is active, switch off the "Lost Item" mode.
4. Scroll all the way down and tap "Remove Item" and repeat to confirm. This removes the tracker which emits a series of beeps as confirmation. You can now connect it to another Apple account.

Renaming the tracker

1. Open the "Find My" app and select "Items".
2. Tap the tracker in the list.
3. Scroll down and tap "Rename Item".
4. Select a new name and tap "Done".

Resetting the tracker

If you have removed the tracker from your Apple device in "Lost Mode", you will need to reset it to reconnect it.

▷ Press the function button four times in quick succession, and then press and hold it a fifth time until you hear a sequence of beeps. The tracker is reset and ready for use again.

Preventing unwanted tracking

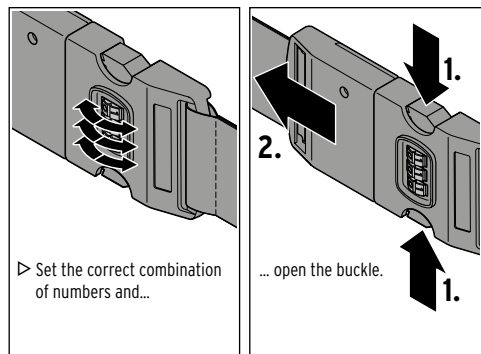
If your Apple device detects another person's tracker close to you that is moving with you over a certain period of time, you will receive a notification and the other tracker will emit a sound so that you can locate it. This only applies to external trackers that are not currently connected directly to their owner, i.e. the owner is not in the immediate vicinity.

If friends or family members who are currently with you also have trackers, no alarm is triggered, as long as their trackers are connected to their own devices.

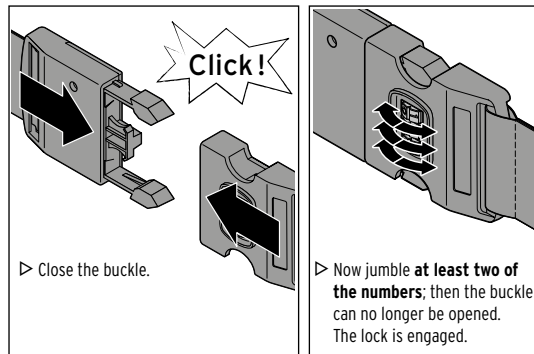
Setting the combination lock

Unlocking the lock and opening the buckle

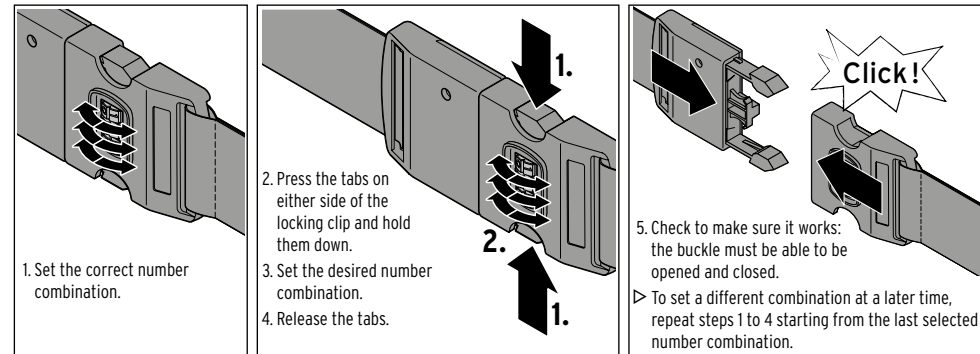
The combination of the lock is factory set to 000.
The three digits set must be exactly centred in a line in the windows.



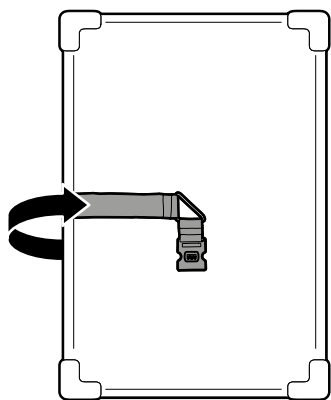
Closing the lock



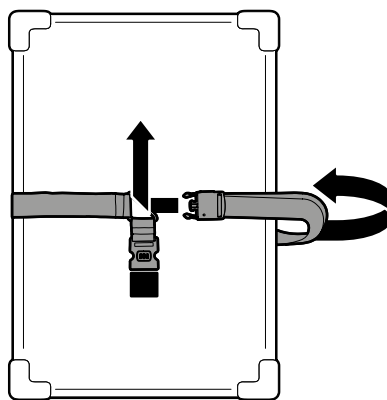
Setting a different number combination



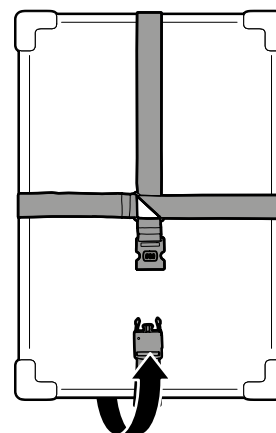
Attaching the suitcase strap



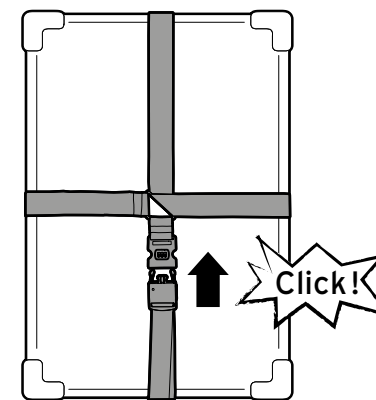
- Lay the suitcase strap flat on the floor and place the suitcase with its underside centred on the strap.
- Pull the end with the belt buckle upwards on one side, as shown.



- Pull the end with the clips upwards on the opposite side of the case.
- Thread the end with the clips through the metal triangle from below and pull the strap around the case at a 90° angle as shown ...



... and up to the belt buckle on the other side.



- Close the buckle.
- Tighten the straps if necessary.
- Finally, check that the suitcase strap is secure and that the lock is correctly positioned.

Care

- Never immerse in water or other liquids.
- Do not use any caustic, aggressive or abrasive products for cleaning.
- ▷ When necessary, wipe the buckle, the tracker and the strap with a damp cloth.

Problems / solutions

The tracker cannot be switched on	<ul style="list-style-type: none"> Press the function button to switch on and wait for the confirmation beep. Is the battery flat? Replace if necessary.
The "Find My" app does not find the tracker in the list	<ul style="list-style-type: none"> Tracker not switched on? Press the function button to switch on and wait for the confirmation beep. Is the battery flat? Replace if necessary. Version of the "Find My" app out of date? Update the app.
The "Search in immediate vicinity" option is not displayed	<ul style="list-style-type: none"> "Location services" not switched on? Set the function in the app settings: ("Settings" > "Privacy & Security" > "Local Services")
The app cannot request a beep from the tracker	<ul style="list-style-type: none"> Is the battery flat? Replace if necessary. Is the tracker out of Bluetooth range? Search for the route to your tracker in the app.

Disposal

The product, its packaging and the supplied battery have been manufactured from valuable materials that can be recycled. Recycling reduces the amount of refuse and preserves the environment. Dispose of the **packaging** at a recycling point that sorts materials by type. Make use of the local facilities provided for collecting paper, cardboard and lightweight packaging.



Devices, single-use batteries and rechargeable batteries marked with this symbol must not be disposed of along with household waste!

You are legally obliged to dispose of old devices separately from household waste. Electronic devices contain hazardous substances and, if stored or disposed of improperly, may cause harm to health and the environment. Information about collection points where old devices can be disposed of free of charge is available from your local authorities. Flat single-use and rechargeable batteries must be handed in at a local authority collection point or returned to a battery retailer. Tape off the contacts of lithium single-use/rechargeable batteries prior to disposal.

Declaration of Conformity

Commaxx BV hereby declares that this product is in compliance with the essential requirements and other relevant provisions of Directive 2014/53/EU at the time of its being placed on the market.
The complete Declaration of Conformity can be found at <https://nedis.com/en-us/153283-734956>

Technical specifications

Model:	734 956
Single-use battery: (tested as per UN 38.3)	CR2032/3.0 V (Li) Watt-hour rating: 0.66 Wh IPX4 (splash-proof)
IP code:	
Bluetooth [®] version:	V5.2 BLE / earlier versions (from 1.1) are compatible but may not support all features
Range:	max. 20 m (in open spaces)
Frequency range:	2.402 GHz to 2.480 GHz
Max. transmission power:	33 mW
Device standards:	GATT
Ambient temperature:	+10 to +40 °C
Manufactured by:	Commaxx BV, Wiebachstraat 37, 6466 NG Kerkrade, The Netherlands
Compatible with	
Bluetooth [®] smart-enabled Apple device	
• iOS phones (iOS 14.5 and higher); iOS tablets (iOS 14.5 and higher)	
• The Bluetooth [®] word mark and logos are registered trademarks owned by Bluetooth SIG, Inc. and any use of such marks by Commaxx BV is under license.	

Works with Apple[®]

The Apple[®] Find My[®] network provides an easy, secure way to locate compatible personal items using the Find My app on your iPhone[®], iPad[®], Mac[®], or the Find Items app on Apple Watch[®]. To use the Apple Find My app to locate this item, the latest version of iOS[®], iPadOS[®], or macOS[®] is recommended. The Find Items app on Apple Watch requires the latest version of watchOS[®]. Use of the Works with Apple badge means that a product has been designed to work specifically with the technology identified in the badge and has been certified by the product manufacturer to meet Apple Find My network product specifications and requirements. Apple is not responsible for the operation of this device or use of this product or its compliance with safety and regulatory standards. Apple, Apple Find My, Apple Watch, Find My, iPhone, iPad, iPadOS, Mac, macOS and watchOS are trademarks of Apple Inc. IOS is a trademark or registered trademark of Cisco in the U.S. and other countries and is used under license.

Information about the supplied battery

Manufacturer: Changzhou Anyida Power Technology Co., Ltd.
No.1 East Road, Lou Xia Industrial Park, Rulin Town, Jintan District, Changzhou City, V.R. China,
www.anyida-power.net / mail to:
anyida@anyida-power.net
Battery type: CR2032 lithium manganese dioxide coin battery
Manufactured: 07/2025
Made in: China

Imported by: Commaxx B.V., Wiebachstraat 37, 6466 NG Kerkrade, The Netherlands, mail to: support@commaxxgroup.com