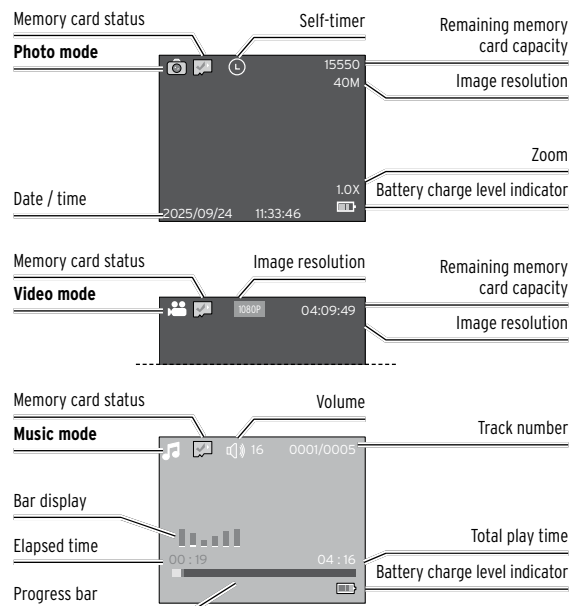
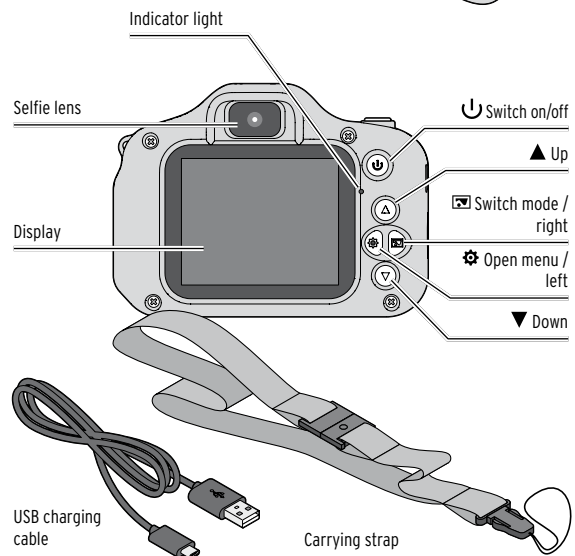
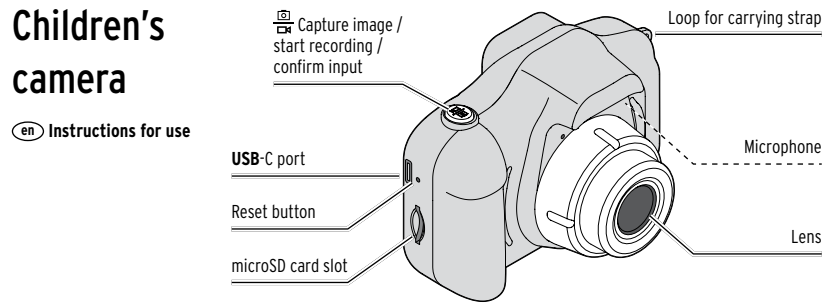


Children's camera

en Instructions for use



Warning! Safety warnings

Read the safety warnings carefully and only use the product as described in these instructions to avoid accidental injury or damage.

Keep these instructions for future reference. If you give this product to another person, remember to also include these instructions.

Intended use

- The product is suitable for capturing digital photos and video sequences.
- The product is designed for private use and is not suitable for commercial purposes. Only use the product under moderate climatic conditions.

Respect the privacy of others!

• Not suitable for children under 36 months. Small parts. Choking hazard.

- Remove all packaging materials before giving the product to a child. Choking hazard.

Danger due to electricity

- Do not immerse the product in water or other liquids.
- Do not use the device in damp or wet environments.
- Do not use the product if it shows visible signs of damage.
- Do not make any modifications to the product. Do not forcefully open the casing. Only have repairs to the product carried out by a specialist workshop. Improper repairs can result in considerable danger to the user.

When charging the product, note the following:

- Rechargeable batteries must only be charged under adult supervision.
- Use only suitable mains adapters (see "Technical specifications").
- Do not use or attempt to repair faulty mains adapters.

Risk of explosion/fire/burns

- You cannot and must not attempt to replace or remove the built-in rechargeable battery yourself. There is a risk of explosion if the battery is replaced incorrectly. It should be replaced only with an identical rechargeable battery or a battery of the same type. If a rechargeable battery is defective, contact a specialist workshop.
- Do not place any open flames, such as lit candles, near the product. The product must be kept away from candles and other naked flames at all times to prevent the spread of fire.
- The product contains rechargeable lithium batteries. These must not be taken apart, thrown into a fire or short-circuited.
- Do not modify and/or deform/heat/dismantle rechargeable batteries. Do not allow damaged rechargeable batteries to come into contact with water.
- Avoid storing, charging and using the product at extreme temperatures and in areas of extremely low air pressure (e.g. at high altitudes).

Material damage

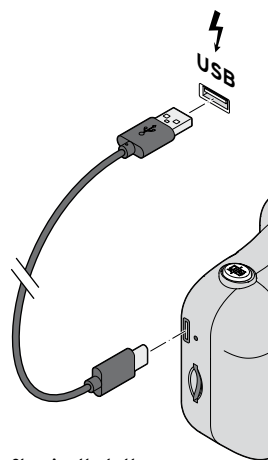
- Do not immerse the product in water or other liquids. You should also protect it from splashes and drops of water.
- Taking the product from a cold place to a warm place may cause condensation to form inside it. In this case, leave the device switched off for a few hours.
- Do not drop the product or subject it to other forms of severe physical shock.
- Never open or remove any part of the casing. Do not insert any objects into the openings in the casing.
- Protect the product from intense heat (direct sunlight, heaters, etc.) as well as from dust and moisture.
- When inserting or removing the memory card, ensure that the camera, your hands and the memory card are completely dry.
- Before cleaning the camera, disconnect it from the computer.
- Do not use any caustic, aggressive or abrasive products for cleaning.

Caution - loss of data

- Never disconnect the camera from the computer when data is being read, written or deleted. This can result in the loss of data. First disconnect the camera from the computer before switching it off or removing the memory card.
- Do not expose the camera or memory cards to magnets or magnetic fields. A magnetic field can damage or completely erase stored data. It may also cause permanent damage to the storage media. Damage to the camera and repairs may also result in an unavoidable loss of data.

Note

- The camera and memory card may feel warm after prolonged continuous use. This is perfectly normal and does not constitute a malfunction.



Charging the battery

The battery icon on the display indicates the battery charge level.

Fully charge the camera's battery before you use it for the first time. This can take up to 2 hours.

You need a 5V 1A USB mains adapter; other types are not suitable.

1. Switch the camera off.
2. Connect the supplied charging cable to the camera's USB-C port and to a suitable USB mains adapter (not included) or similar.

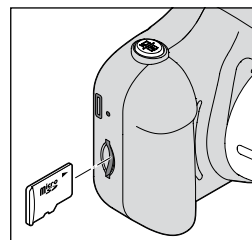
When you connect the camera to the power supply, it will switch on.

During charging, the indicator light will light up red. Depending on the selected mode, the charging battery icon appears on the display. Once the rechargeable battery is fully charged, the indicator light will go out.

Information on rechargeable batteries

- Charge the rechargeable battery as soon as a low charge level is indicated. If the rechargeable battery is completely flat and the camera can no longer be switched on, allow it to charge for a minimum of 30 minutes.
- To preserve the full capacity of the rechargeable batteries for as long as possible, you should fully recharge the batteries every 2 to 3 months, even if you do not use the product.
- Charge the batteries in an environment between +10 and +40 °C.
- The batteries will best hold their charge at room temperature. The lower the surrounding temperature, the shorter the playback time.

If you connect the product to a PC for charging, take all the usual precautions regarding backing up your data.



Inserting the microSD card

To store your photos and videos, you can use the camera with a microSD card with a capacity of up to 32 GB (not included).

1. Turn off the camera and, if necessary, disconnect it from the power supply.
 2. Insert the card into the slot as shown until you feel it click into place. You can only insert the card in one direction. If the card doesn't slide in easily, do not force it - check the direction.
- ▷ Gently press the card to release it - it will then spring out. Remove it completely.

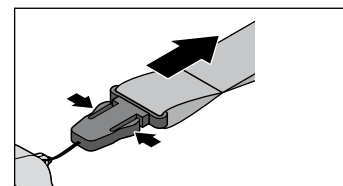
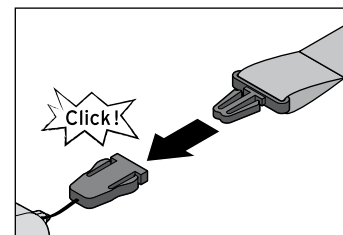
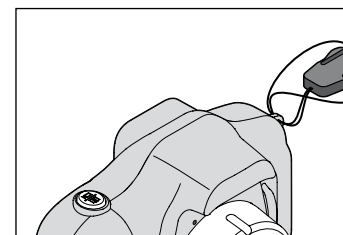
Information about the microSD card

Instructions for formatting the microSD card can be found on the reverse side under **Settings > Format**.

The microSD card must be formatted in the camera. A folder named "DCIM" will be created: the camera stores the captured files in this folder. You can also copy MP3 files from your computer into this folder to play music using the camera.

Note the following: Without a microSD card, you cannot record videos.

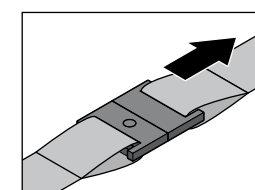
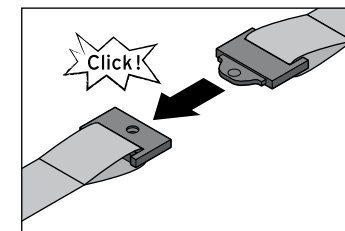
The camera is only compatible with memory cards formatted in FAT32. If you wish to use a **64 GB** memory card, it must be formatted to **FAT32** on the PC using special formatting software. The standard Windows formatting software is not able to do this. However, there are various suitable software programmes available to download for free on the internet.



Attaching the carrying strap

You can attach the included carrying strap to the camera. The wrist strap of the carrying strap can easily be unclipped if it gets in the way.

1. Detach the wrist strap from the clip by pressing the side springs together and pulling off the strap.
2. Attach the clip to the camera.
3. Clip the wrist strap back on.



Fastening and unfastening the carrying strap

1. To fasten the wrist strap of the carrying strap, push the two ends together.
2. To unfasten the wrist strap, pull the two ends apart.

Switching on and off

On - Press and hold until the indicator light turns blue. A melody sounds and the display switches on.

Off - Press and hold until a melody sounds. The display switches off and the indicator light goes out.

Depending on the selected setting, the camera enters standby mode after approximately 1-5 minutes without any button being pressed. The display turns off, but the indicator light remains blue.

To reactivate the camera, **briefly press**.

Depending on the selected setting, the camera switches off completely after a further 2 minutes.

Navigating the menu

Use the arrow keys to navigate between the individual menu items.

If multiple menu items are visible, the currently selected item pulses.

Confirm your selection using the shutter button on top of the camera.

Briefly press the On/Off button to cancel and return to the previous menu level.

Operating modes

After switching on, a welcome screen appears, followed by the start menu with the operating modes: **Camera - Video - Play - Settings - Games - Music**.



Camera mode

You can store up to 50 photos in the camera's internal memory. To save photos permanently - or to transfer the photos stored internally to a computer or similar device via USB - you must insert a microSD card (see the section on the reverse side). The memory card icon appears on the display with a **green tick**. If no memory card is inserted, the icon is shown with a **red X**.

Photo functions:

on top of the camera - **Press briefly** to take a photo.

Press and hold to zoom in on the image.

Press and hold to zoom out of the image.

Press briefly to switch between different filters, effects, frames, on-screen stickers and more.

Press briefly to activate the self-timer (preset to 5 s). A clock symbol will appear on the display. You can preset the self-timer in "Settings - Timed photo" to **Off - 2 s - 5 s - 10 s**. However, if you switch off the self-timer in camera mode, it will revert to the 5 s preset the next time you switch on the camera.

Press briefly to switch from the main lens to the selfie lens.

Press briefly to return to the start menu.

Video mode

Video mode can only be used when a microSD card is inserted.

on top of the camera - **Press briefly** to start and stop video recording. The built-in microphone records the sound.

Before starting the recording ...

Press briefly to switch between different filters, effects, frames, on-screen stickers and more.

Press briefly to ... activate **Slow**. The recorded scene is played back in slow motion.

... switch on **Fast**. The recorded scene is played back at a faster speed.

Press briefly to switch from the main lens to the selfie lens.

Press briefly to return to the start menu.

Playback mode

Photos (JPG) and videos (AVI) taken with the camera can be accessed here.

Playback of photos stored in the internal memory is only possible when no microSD card is inserted.

Press briefly to scroll through saved photos and videos.

on top of the camera - **Press briefly** to start and stop video playback.

Deleting photos/videos

Press briefly to display the Delete menu **One or All**.

Press briefly to switch between "Cancel" and "Execute".

Press briefly to confirm.

Settings

Here you can adjust various settings for your camera.

Press briefly to select a menu item.

Press briefly to confirm.

Size (Photo)

Press briefly to choose between **40M**, **20M**, **18M** and **16M** (photo resolution). (The actual resolution is 640x480p; the other values are interpolated.)

Press briefly to confirm.

Press briefly to exit the menu item without making changes.

Timed photo

Press briefly to choose between **Off**, **2 s**, **5 s** or **10 s** (delay before shutter release).

Press briefly to confirm.

Press briefly to exit the menu item without making changes.

Resolution (Video)

Press briefly to choose between **1080p**, **720p** and **VGA** (video resolution). (The actual resolution of **VGA** is 640x480p, the other values are interpolated.)

Press briefly to confirm.

Press briefly to exit the menu item without making changes.

Date Stamp

Here you can set whether the date and time are displayed on the photo.

Press briefly to switch between On and Off.

Press briefly to confirm.

Press briefly to exit the menu item without making changes.

Language

Press briefly to select a language.

Press briefly to confirm.

Press briefly to exit the menu item without making changes.

Auto screen

Here you can set whether the display switches off when not in use and after how long.

Press briefly to choose between **Off**, **3 Min.**, **2 Min.** and **1 Min.**

Press briefly to confirm.

Press briefly to exit the menu item without making changes.

Auto off

Here you can set whether the camera switches off when not in use and after how long.

Press briefly to select between **Off**, **3 Min.** and **5 Min.**

Press briefly to confirm.

Press briefly to exit the menu item without making changes.

Volume

Press briefly to adjust the volume (for beeps and MP3 files) from 0 to 7.

Press briefly to confirm.

Press briefly to exit the menu item without making changes.

Format (microSD card)

Here you can format the inserted microSD card.

Press briefly to select **Cancel** or **Execute**. Warning: if you confirm with **OK** in step 2, there is no further prompt - the card will be formatted immediately.

Press briefly to confirm.

Press briefly to exit the menu item without making changes.

Date ...

Press briefly to increase or decrease the value.

Briefly press the respective button to confirm the change, move to the next entry and exit the menu item when finished.

Press briefly to exit the menu item without making changes.

Sys. Reset

Here you can restore all settings to the default settings. Data on the microSD card is not affected.

Press briefly to select **Cancel** or **Execute**. Warning: if you confirm with **OK** in step 2, there is no further prompt - the camera will be reset immediately.

Press briefly to confirm.

Press briefly to exit the menu item without making changes.

Version

Here you can check the current software version.

Games mode

Here you will find various computer games.

Press briefly to select a game.

on top of the camera - **Press briefly** to confirm.

Press briefly to navigate left, right, up or down in the game.

Press briefly to exit the game.

Press briefly to exit the game.

Press briefly to exit the game.

Music mode

To load music onto the camera, insert a microSD card containing MP3 files.

Press briefly to switch between music tracks.

Press briefly to adjust the volume between 0 and 16.

on top of the camera - **Press briefly** to start and stop playback.

Press briefly to exit the list.

Connecting to the computer ...

... with a microSD card inserted in the camera

1. Connect the camera to the computer's USB port using the supplied USB cable and switch the camera on.

A connection icon appears on the display.

2. Open the newly displayed DCIM folder for your camera.

3. You can copy MP3 files from your computer to the camera's folder.

4. You can copy photos or videos from the camera's corresponding folders to your computer.

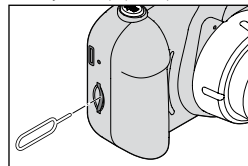
Problems / solutions

Camera not charging or won't switch on:

- Is the rechargeable battery flat? Charge the rechargeable battery for at least 30 minutes before switching on the camera.
 - Check whether the mains adapter is suitable: Output **5V 1A**. The rechargeable battery cannot be charged with other mains adapters.
 - Check the indicator light: if it lights up red, the battery is charging; when it goes out, the battery is fully charged.
 - When the rechargeable battery is fully charged, ...
 - ... remove the microSD card and then reinsert it.
 - ... perform a reset.
- Colour distortion on the display.
- Perform a reset.

If the camera becomes unresponsive

1. Perform a reset by pressing the reset button in the hole next to the USB port using a pointed object (e.g. a straightened paper clip).



2. Next, switch on the camera by pressing and holding the **On** button.

Cleaning

- ▷ Blow dust off the lens or display using a small air blower designed for cameras. Alternatively, use a soft brush.
- ▷ If necessary, you can gently wipe the casing with a damp cloth.

Disposal

The product, its packaging and the built-in rechargeable battery have been manufactured from valuable materials that can be recycled. Recycling reduces the amount of refuse and preserves the environment. Dispose of the packaging at a recycling point that sorts materials by type. Make use of the local facilities provided for collecting paper, cardboard and lightweight packaging.



Devices, single-use batteries and rechargeable batteries marked with this symbol must not

be disposed of along with household waste! You are legally obliged to dispose of old devices separately from household waste.

Electronic devices contain hazardous substances and, if stored or disposed of improperly, may cause harm to health and the environment. Information about collection points where old devices can be disposed of free of charge is available from your local authorities.

Flat single-use and rechargeable batteries must be handed in at a local authority collection point or returned to a battery retailer. Tape off the contacts of lithium single-use/rechargeable batteries prior to disposal.

Warning! This device contains a rechargeable battery that, for safety reasons, is firmly built into the device and cannot be removed without destroying the casing. Improper disassembly leads to safety hazards. For this reason, take the device intact to a collection point where the device and batteries will be disposed of properly.

Technical specifications

| | |
|--|---|
| Model: | 734 962 |
| Weight: | 64 g |
| Dimensions: | 85 * 64 * 50 mm |
| Rechargeable battery: | lithium-ion 3.7 V 600 mAh |
| Watt-hour rating: | 2.22 Wh (tested as per UN 38.3) |
| Manufacturer: | Denver Germany GmbH, Steinbachstr. 60, 94036 Passau, Germany contact.hq@denver.eu |
| Email: | |
| Manufacturing date: | 11/2025 |
| Input: | 5 V DC 1 A USB |
| Charging time: | approx. 2.0 hours |
| Operating time with fully charged battery: | approx. 5 minutes (continuous recording; may vary depending on environmental conditions - battery drains faster in cold temperatures) |
| Mains adapter (not included): | |
| Input: | AC 100-240 V 50/60 Hz |
| Output: | DC 5 V 1.0 A |
| | Only use mains adapters of protection class II that are approved for use with household appliances to charge the device. |
| Sensor: | 0.3 MP CMOS |
| Photo resolution: | 40M, 20M, 18M, 16M, 12M, 8M, 5M, 3M, 2M |

| | |
|----------------------|---|
| | (Interpolated) |
| Video resolution: | 1080P (1440x1080), 720P (1280x720) (Interpolated) |
| Lens: | fixed focus |
| Field of view: | 70° |
| Digital zoom: | 4+ |
| Display: | LCD |
| Size: | 2" IPS |
| Resolution: | 220x176 |
| Speaker: | 1 W |
| Ambient temperature: | +10 to +40 °C |
| Ambient humidity: | 20% to 85% |
| Card slot for: | microSD up to 32 GB |
| Photo format: | JPG |
| Video format: | AVI |
| Music format: | MP3 |
| Connections: | microSD card slot, USB-C port |
| Compatible with: | Windows XP / Vista / 7 / 8 / OS X 10.8 |



www.tchibo.de/instructions



Product number: 734 962

Manufacturer: Denver Germany GmbH, Steinbachstr. 60, 94036 Passau, Germany