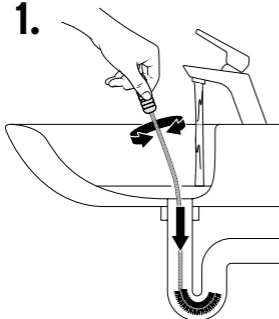


en Instructions for use

Tip: Open the tap and run warm water while you push the drain brush into the drainpipe.

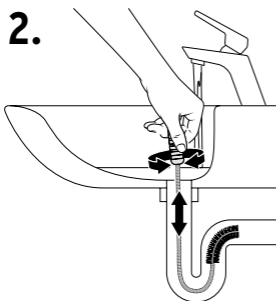
Running water also makes it easier to pull the brush out of the drain if it gets caught.

1.



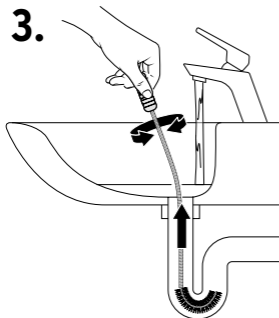
Insert the drain brush into the drainpipe and rotate it back and forth, ...

2.



... push it in and out and rotate it at the same time, ...

3.



... then continue to rotate it back and forth as you gently pull it out.