

## For your safety

Read the safety warnings carefully and only use the product as described in these instructions to avoid accidental injury or damage.

Keep these instructions for future reference. If you give this product to another person, remember to also include these instructions.

The product is only suitable for decoration and not for lighting whole rooms. The product is suitable for use both indoors and outdoors. It is designed for private use and is not suitable for commercial purposes.

• Keep packaging materials out of the reach of children. They pose several risks, including the risk of suffocation!

• Children are not aware of the risks involved in handling electrical devices incorrectly. Therefore, never allow children to use electrical devices unsupervised.

• The product is suitable for outdoor use and complies with protection type IP44. This means that it is protected against contact with tools, wires and foreign objects larger than 1 mm in diameter and splashes of water, such as rain. However, you should protect it from heavy rain and streams of water. Do not operate the product under water. This would immediately result in a short circuit and present the risk of an electric shock.

• Only connect the product to a properly installed power socket with a mains voltage that complies with the technical specifications of the mains adapter. The LEDs cannot be dimmed. Never connect the product to dimmable power sockets.

• Do not use an extension cable.

• Always connect the connection cable to the mains adapter before you plug the mains adapter into the power socket. Always unplug the mains adapter from the power socket before disconnecting the connection cable from the mains adapter.

• Remove the mains plug from the power socket ...

... if malfunctions occur during use,

... during thunderstorms,

... before cleaning the product.

Always pull on the mains adapter, not on the connection cable.

• The product must be used only with the mains adapter provided.

• The connection cable must not be kinked or crushed.

Keep the connection cable away from hot surfaces and sharp edges.

• The product must not be electrically connected to other fairy lights or anything similar.

• The On/Off switch does not disconnect the mains adapter from the power supply.

The power supply can only be cut off by unplugging the mains adapter. The power socket used must be easily accessible so that you can quickly unplug the mains adapter whenever necessary.

• Do not use the product if the product itself, the connection cable or the mains adapter shows any visible signs of damage.

• Do not make any modifications to the product. Do not attempt to replace the connection cable yourself. If the connection cable is damaged, dispose of the product in accordance with the current regulations.

• Route the connection cable in such a way that it cannot be tripped over. The cable is not suitable or certified for underground installation.

• Do not position the product in hollows or depressions where puddles might form.

• The LEDs are firmly built in and cannot and must not be replaced.

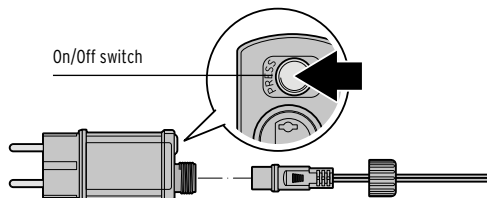
• Do not use any caustic, aggressive or abrasive products for cleaning.

• The product is suitable for outdoor use at temperatures above approx. -10 °C. In temperatures colder than this, keep the product indoors as it may otherwise become damaged.

• The product is not designed to withstand strong winds, storms, etc.! Take down the product in good time if strong winds or storms are forecast.

• Do not switch the product on while it is still in its packaging and do not cover it when it is in use.

## Connecting / switching on/off / timer function



1. Insert the plug on the connection cable into the socket on the mains adapter and screw on the protective cap firmly.
2. Insert the mains adapter into a power socket.
3. Press the On/Off switch on the mains adapter ...
  - ... **1x** to switch the product on continuously.
  - ... **2x** to switch the product on with the timer function. The LEDs in the fairy lights flash 2x and then light up continuously.
  - ... **3x** to switch the product off.

If the product is already lit up upon being connected to the power socket, the order of the switch functions will change to be:

press 1x = switch on timer function, press 2x = switch off, and so on.

**Timer function:** The LEDs are switched on and off as follows:

ON: 6 hours - OFF: 18 hours - ON: 6 hours and so on.

## Attaching the LED light curtain with self-adhesive hooks

**Keep the following information in mind to ensure the hooks have a firm hold on the wall:**

The adhesive film adheres to all smooth and flat surfaces, e.g. mirrored or glass surfaces, tiles, etc. Do not stick the hooks over joints and other irregularities. The adhesive film will not stick onto textured surfaces.

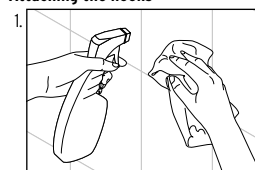
The adhesive film is intended for permanent fixture. Avoid attaching the hooks to sensitive surfaces if you want to remove them again later.

The best adhesive strength can be attained at temperatures between 23 °C and 40 °C.

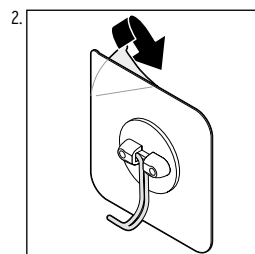
The hooks are only intended for hanging up the LED light curtain. Do not hang any other objects on them.

Load capacity per hook: max. 0.5 kg

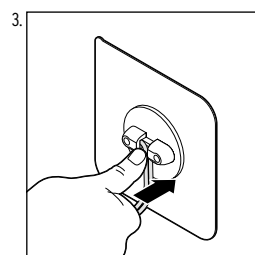
### Attaching the hooks



The surface must be free of dust, grease, silicone and limescale. Clean and degrease the surface **with pure alcohol (isopropyl) or methylated spirits**. Bathroom or all-purpose cleaners are not suitable. Slightly pre-dry the cleaned spot, then let it dry thoroughly.

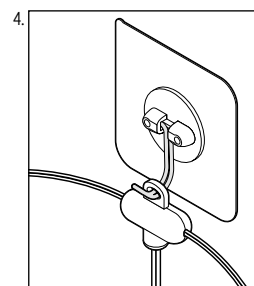


Peel the protective film off the back of the hooks and stick the hooks onto the cleaned surface.



Smooth the film around the hooks into place and press on the hooks themselves too.

**Wait 24 hours**, then the hooks are ready for use.

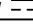
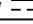
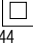



Hang the product on the hooks as illustrated.

## Cleaning

1. Remove the mains adapter from the power socket.
2. Wipe off the product with a dry, soft and lint-free cloth.

## Technical specifications

Model:	718 169
Mains adapter	
Input:	220-240 V ~ 50/60 Hz
Output:	3.5 V  1 W (the  symbol indicates direct current)
Protection class:	II 
IP code:	IP44
LED light curtain	
Bulbs:	66 LEDs
(non-replaceable)	
Protection class:	III 
IP code:	IP44
Ambient temperature:	-10 °C to +40 °C

In the course of product improvement, we reserve the right to make technical and optical modifications to the product.

## Disposal

The product and its **packaging** have been manufactured from valuable materials that can be recycled. Recycling reduces the amount of refuse and preserves the environment. Dispose of the packaging at a recycling point which sorts materials by type. Make use of the local facilities provided for collecting paper, cardboard and lightweight packaging.



**Devices** marked with this symbol must not be disposed of along with normal household waste!

You are legally obliged to dispose of old devices separately from household waste. Electronic devices contain hazardous substances, and, if stored or disposed of improperly, may cause harm to health and the environment. Information about collection points where old devices can be disposed of free of charge is available from your local authorities.