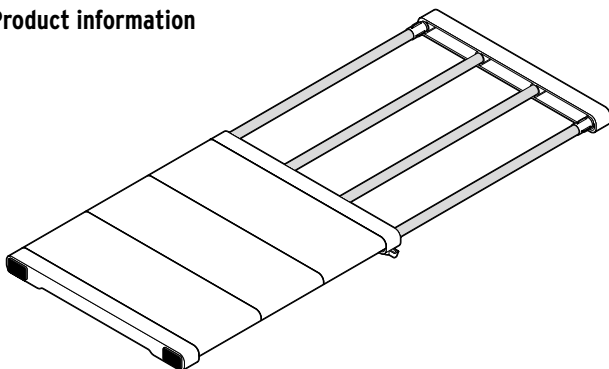


# Versatile shelf system

## **en** Product information



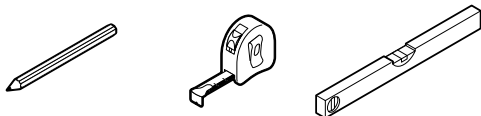
### **Important information**

- This versatile shelf system provides additional storage space for clothes, shoes, towels and other items. If required, you can also hang clothes hangers on the telescopic rods.
- The product can be fixed between two parallel surfaces, e.g. the inner walls of a cupboard or shelving uprights. The width is infinitely adjustable from 36 cm to a max. of 60 cm. Do not extend the product further than this!
- The load-bearing capacity is max. 10 kg. Only use the product for its intended purpose and do not overload it.
- For a secure mount, be sure to attach the product using the adhesive mounts supplied.
- The product is only suitable for indoor use - protect it from moisture.
- The product is designed for private use and is not suitable for commercial purposes.
- Do not use abrasive or caustic cleaning products or hard brushes, etc. for cleaning. Clean the surfaces with a slightly damp cloth and wipe them down with a dry cloth.

### **Please observe the following notes on the adhesive mounts:**

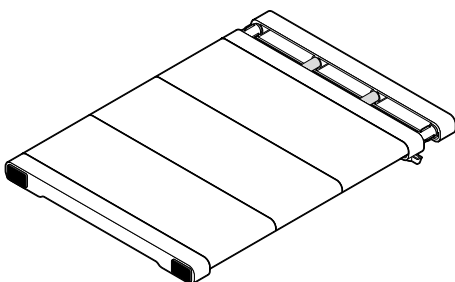
- The adhesive mounts are intended for **single use**. As a result, measure the exact position before attaching the adhesive mounts.  
The adhesive mounts must be fitted **in the middle of the shelf side pieces**.
- The adhesive mounts will adhere to smooth, flat surfaces, such as the inside walls of cupboards. The adhesive mounts do not adhere well to a textured or painted surface or to oiled wooden surfaces.
- The adhesive mounts are intended for permanent attachment. Avoid attaching them to sensitive surfaces if you want to remove them later. It is possible that the substrate will bond with the adhesive layer. When removing the adhesive mounts, the paint, coating or similar finish may come away from the substrate. In most cases, adhesive residues on wood or other firm surfaces can be removed with cooking oil.
- The substrate must be free of dust and grease to maximise the adhesive bond. If necessary, clean the substrate and allow the cleaned area to dry thoroughly. Place the adhesive mounts in the desired position and press them there firmly for approx. 10 seconds. After approx. 30 minutes, apply pressure again for approx. 10 seconds. After a further 24 hours the mounts are ready for use.
- The best adhesive strength can be attained at temperatures between 23 °C and 40 °C.

## Installation will require:

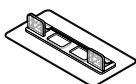


## Contents

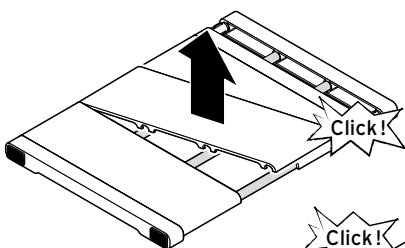
1 x



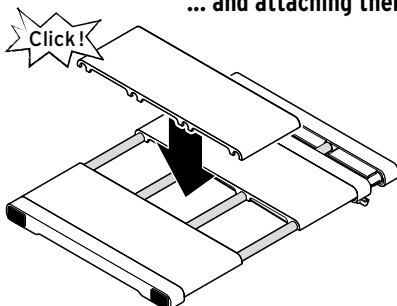
2 x



## Removing the panels ...

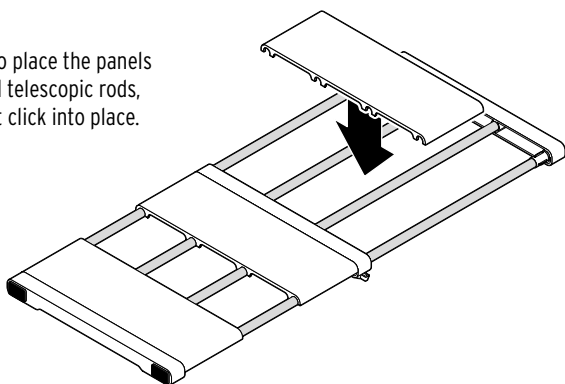


## ... and attaching them

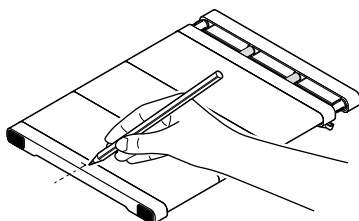


Depending on how you want to use the shelf, you can remove, attach or move the individual panels.

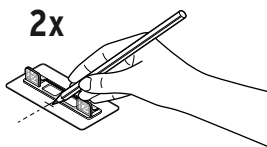
**Tip:** You can also place the panels on the extended telescopic rods, but they will not click into place.



## Preparing for installation

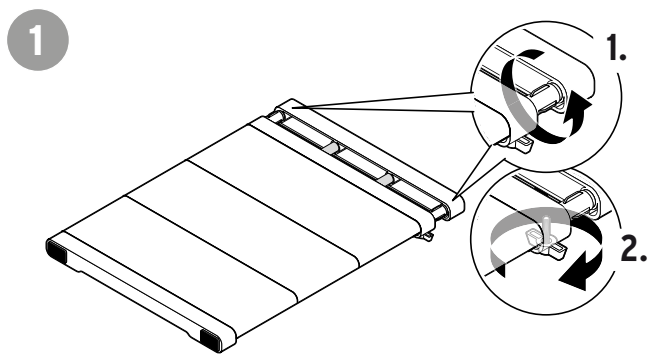


2 x

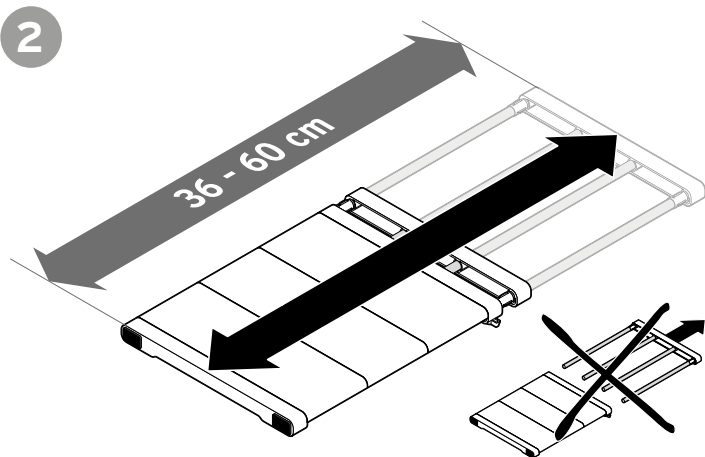


**Tip:** To make fitting easier, mark the centre point on one side of the shelf and on both adhesive mounts beforehand.

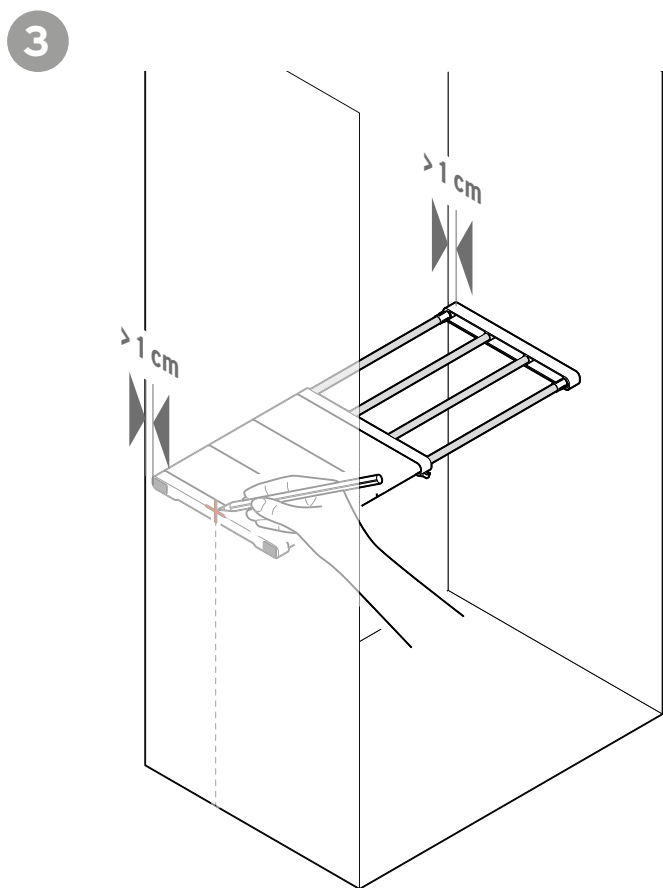
## Installation



Loosen the clamping screws (1.) and the wing screws (2.).

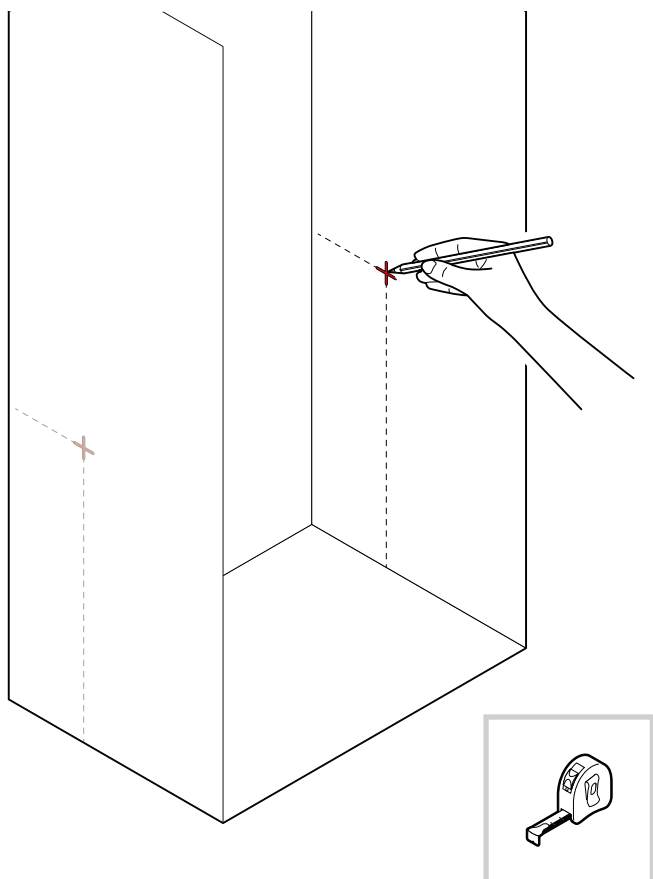


Extend the shelf to the required width (36-60 cm).  
Do not extend it more than 60 cm, otherwise the telescopic rods may slip out!



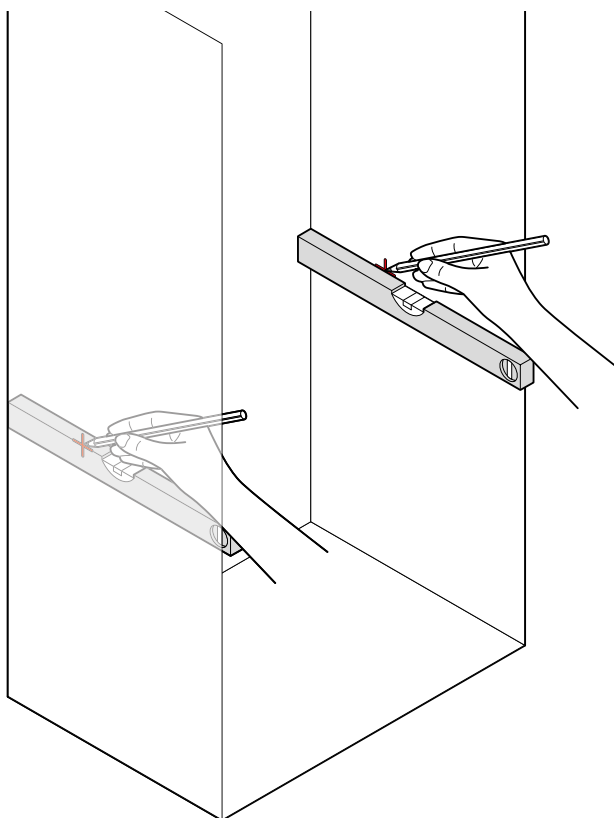
1. Slide the shelf to the desired position between the two side walls to which you want to attach it.  
Leave a minimum distance of 1 cm to the back panel, otherwise you will not be able to turn the wing screws later.
2. First mark the position of the shelf centre point on one side wall.

4



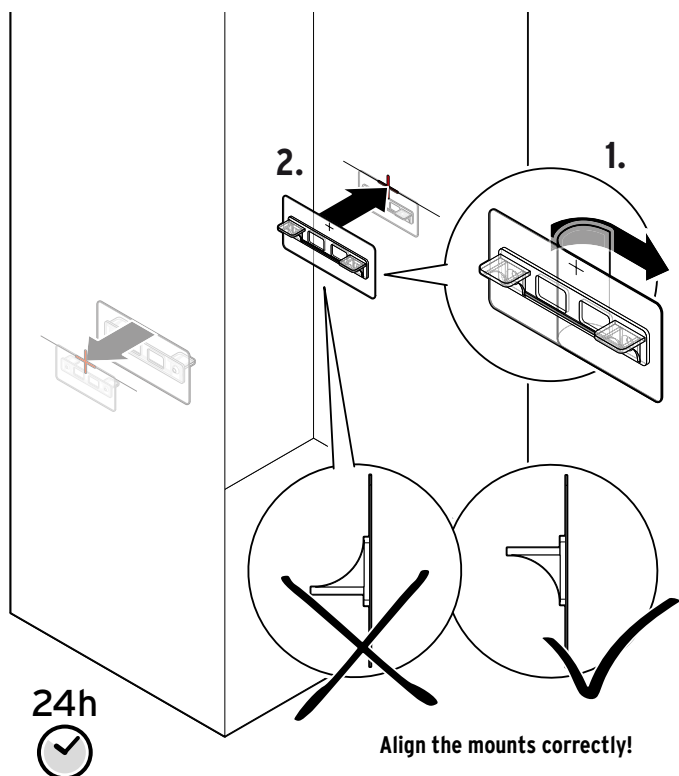
Measure the **height and depth** of the marking with a tape measure or ruler and transfer the measurements to the other side.

5



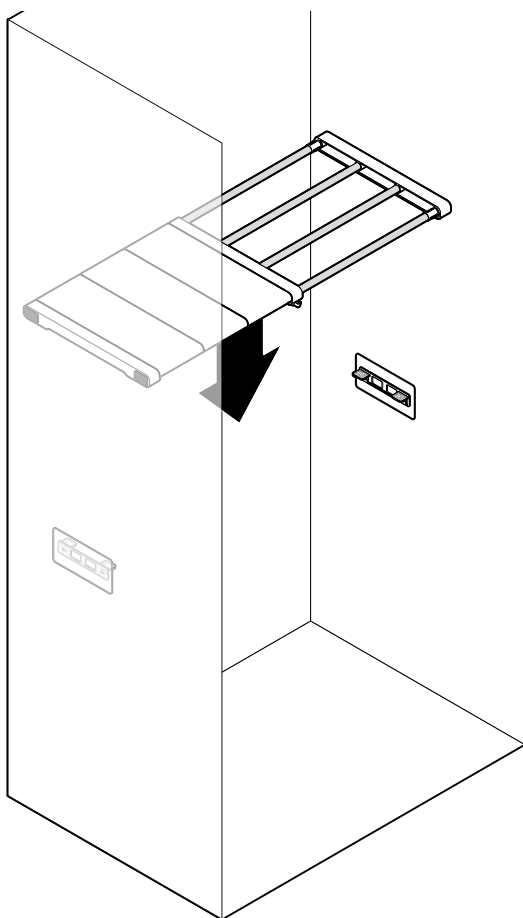
Use a spirit level to draw a horizontal line on each side as a mark for the adhesive mounts.

6

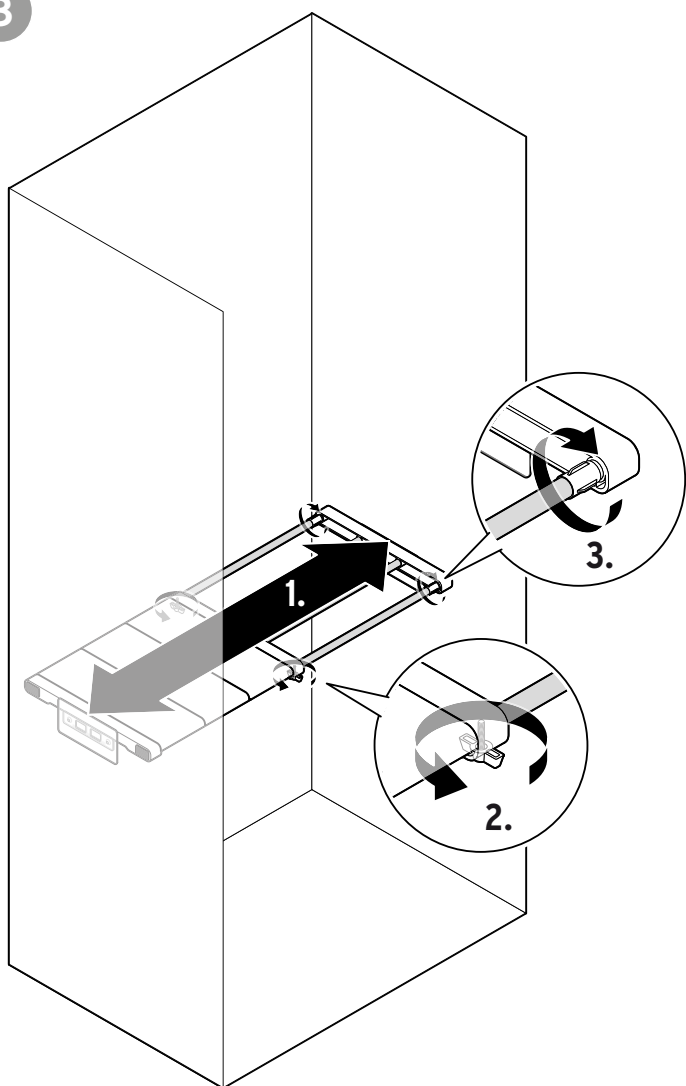


1. Remove the protective film from the adhesive mounts.
  2. Press the adhesive mounts onto the side walls at the marked points.  
The centre point on the adhesive mount must exactly match the marking on the side wall. Ensure the adhesive mounts are correctly aligned!
- Press the adhesive mounts firmly for approx. 10 seconds.  
After approx. 30 minutes, apply pressure again for approx. 10 seconds.  
**After a further 24 hours the mounts are ready for use.**

7



Place the shelf on the two adhesive mounts from above.



1. If necessary, adjust the width of the shelf to fit.
2. Tighten the wing screws.
3. **Carefully** tighten the clamping screws until the shelf is securely clamped between the two walls.

**Warning:** Do not exert too much force, otherwise the side wall of the cupboard will bulge outwards - depending on the rigidity of the cupboard.

