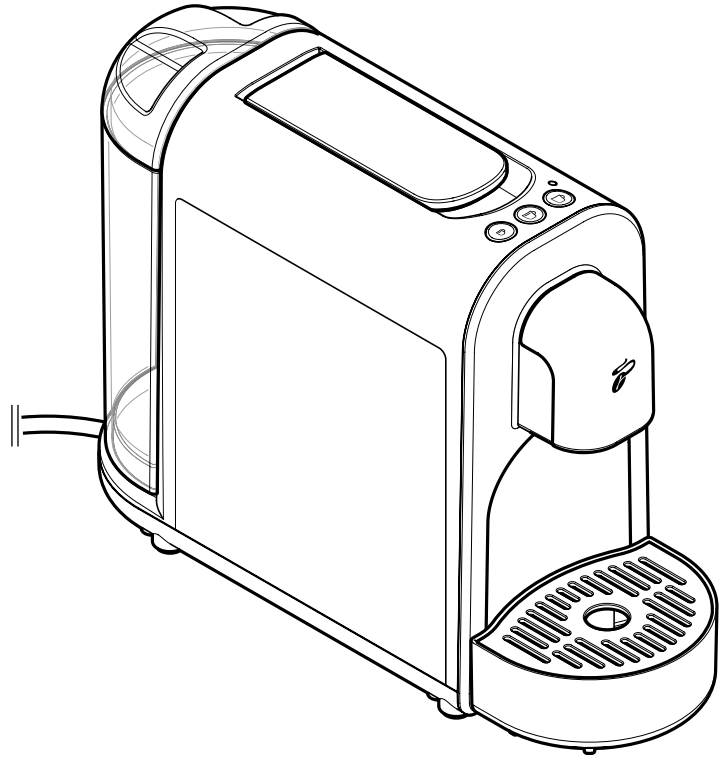


*Tchibo* | Cafissimo

now



**en** Original instructions for use and warranty

## Contents

2	<b>Intended use</b>	10	<b>Filling the water tank</b>
2	<b>Location</b>	10	<b>Preparing beverages</b>
2	<b>About these instructions</b>	11	<b>After use</b>
3	<b>Safety warnings</b>	12	<b>Adjusting beverage strength (beverage volume)</b>
5	<b>At a glance (contents)</b>	12	<b>Restoring the factory settings</b>
5	<b>Control panel – button functions</b>	13	<b>Machine care</b>
6	<b>Removing protective films and packaging materials</b>	14	<b>Descaling</b>
6	<b>Initial operation – prior to first use</b>	16	<b>Problems / solutions</b>
7	<b>Rinsing the machine</b>	17	<b>Disposal</b>
9	<b>The finest aroma – the finest flavour</b>	18	<b>Declaration of Conformity</b>
9	<b>Using large / small cups or glasses</b>	18	<b>Technical specifications</b>
9	<b>Switching the machine on/off</b>	19	<b>Warranty</b>
9	<b>Standby mode</b>	19	<b>Service and repair</b>
		19	<b>Cafissimo service</b>
		19	<b>Product number</b>



We check every machine carefully prior to delivery and test it with coffee capsules and water. For this reason, despite thorough cleaning, you may still find minimal coffee or water residue in the machine. This is not a sign of poor quality - the machine is in perfect working order.



[www.tchibo.de/instructions](http://www.tchibo.de/instructions)

## Intended use

The coffee machine has been designed for the following uses:

- Brewing black coffee, caffè crema and espresso with Tchibo capsules.

The machine has been designed for use in households and household-like environments, e.g.

- in shops, offices or similar work areas,
- agricultural buildings,
- (by customers) in hotels, motels, bed and breakfasts, and other places offering accommodation.

If the machine is used for commercial purposes, it must be overseen and cleaned by trained personnel. Maintenance that goes beyond cleaning and descaling is not necessary for this machine.

---

## Location

Set up the machine in a dry, indoor room. Avoid rooms with high levels of humidity or a high dust content. The machine is suitable for use at ambient temperatures of +10 °C to +40 °C.

---

## About these instructions

This product is equipped with safety features. Nevertheless, read the safety warnings carefully and only use the product as described in these instructions to avoid accidental injury or damage.

Keep these instructions for future reference.

If you give this product to another person, remember to also include these instructions.

Symbols used in these instructions:



This symbol warns you about the risk of injury.



This symbol warns you about the risk of injury caused by electricity.

Signal words used in these instructions:

**DANGER** warns about the imminent risk of serious or fatal injury.

**WARNING** warns about the potential risk of serious or fatal injury.

**CAUTION** warns about the potential risk of minor injury.

**NOTICE** warns about the potential risk of material damage.



This indicates additional information.

---

## Safety warnings

### **Danger to children and people with limited ability to operate appliances**

- This appliance may be used by children aged 8 and over or by people with reduced physical, sensory or mental capabilities, or who lack experience and/or knowledge, provided they are supervised or have been trained in the safe use of the appliance and understand the potential dangers.
- Children must not be allowed to clean the machine unless they are over 8 years of age and supervised while doing so. This machine is maintenance-free.
- Children must not be allowed to play with the machine. Keep the appliance and mains cable away from pets and children under the age of 8.
- Set up the appliance in a place where children cannot reach it.
- Keep the packaging materials out of the reach of children. They pose several risks, including the risk of suffocation!

### **Danger due to electricity**

- Never immerse the machine, mains plug or mains cable in water, as there is otherwise a danger of electric shock. Do not clean the machine using a water jet and do not position it anywhere it could be cleaned with a water jet. Never touch the mains plug with wet hands. Do not use the machine outdoors.
- Never leave the machine to operate unattended.
- Only connect the machine to a properly installed power socket with earthed contacts. The mains voltage must comply with the requirements stated in the machine's technical specifications.
- The mains cable must not be kinked or crushed. Keep it away from sharp edges and sources of heat.
- Do not use the machine if the machine, mains cable or mains plug are damaged, or if the machine has fallen down.
- Never place any beverages or other objects on top of the machine.
- Do not make any modifications to the machine, mains cable or other parts. Electrical appliances must only be repaired by qualified electricians, as improper repairs can cause considerable damage. Have repairs carried out only by a specialist workshop or as arranged by our customer care service.
- If the mains cable of this machine becomes damaged, it must be replaced by the manufacturer, its customer care service or a similarly qualified person in order to avoid danger.
- Unplug the mains plug from the power socket...
  - ... if malfunctions occur,
  - ... if the machine will not be used for a longer period of time,
  - ... before you remove any parts of the machine for cleaning,
  - ... before you wipe the machine housing clean.To do so, always pull on the mains plug, not the cable.
- To disconnect the machine from the mains completely, remove the mains plug from the power socket.

### **Danger of fire/burns/scalds**

- Position the machine in such a way that it is free-standing for use; never place it directly against a wall, in a corner, in a cupboard, against curtains, etc.
- Do not cover the machine while it is in use (e.g. with newspapers, blankets, clothes, etc.).
- Do not touch the beverage spout during or immediately after use. Avoid coming into contact with the beverage coming out of the spout.
- Do not raise the lever while the machine is being used. Keep the capsule opening closed and do not pull out the front drawer with the used capsule container.
- Do not touch the housing surface during or immediately after use. The heating element underneath is still warm.

### **Danger - damage to health**

- Empty and clean the used capsule container and drip tray on a regular basis.
- If you will not be using the machine for a longer period of time, empty the water tank, used capsule container and drip tray.
- Change the water in the water tank daily to prevent germs from collecting.
- Use only the cleaning and descaling agents listed in these instructions, and only appropriate cleaning utensils to clean this machine. The use of other cleaning agents can lead to health hazards.

### **Danger - risk of injury**

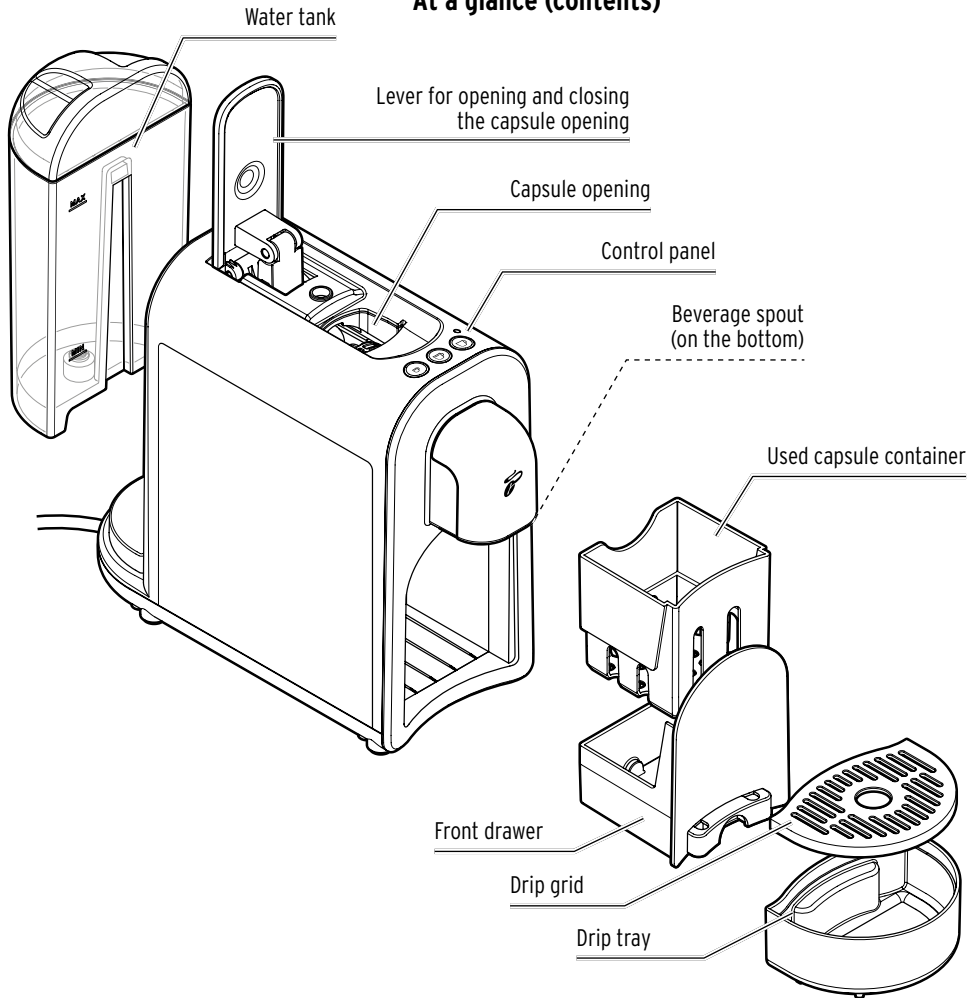
- The capsule opening contains two capsule punchers. These punchers pierce both sides of the capsule when the lever is pressed down. Never reach into the capsule opening. Keep your fingers and any objects away from the capsule opening as you push down the lever.

### **Material damage**

- **Use only original Tchibo Cafissimo capsules.** Do not use capsules from other manufacturers, nor damaged or deformed capsules, and never use ground coffee or coffee beans, as this would damage the machine.  
In these cases, any necessary repairs would not be covered by the warranty.
- Only use the machine with the front drawer and used capsule container inserted.

- Pour only fresh, cold tap water or other drinking water into the water tank.  
Do not use carbonated mineral water or any other liquids.
- Descale the machine as soon as it indicates that this is necessary.
- Do not lift the machine up by the lever. To move the machine, hold it by the outer housing.
- Place the machine on a solid, level surface that is well illuminated and resistant to moisture and heat.
- To ensure that the housing does not melt, do not place the machine on a hob or immediately next to a hot oven, radiator or anything similar.
- Route the mains cable in such a way that it is not a tripping hazard. Do not let the cable hang down from the surface on which the machine is located. This is to ensure that the machine cannot be pulled down by the cable.
- The machine is equipped with non-slip feet. Work surfaces often have varnished or plastic finishes and are treated with a variety of care products. Some of these may contain substances that react adversely to the feet of the appliance and soften them. If necessary, place a non-slip mat under the machine.
- The machine must not be exposed to temperatures below 4 °C. Residual water in the heating system could freeze and cause damage.
- Sound pressure level <70 dB(A).

## At a glance (contents)



## Control panel – button functions

- Indicator light
  - **flashes yellow**  
(switch the machine on for the first time)
  - **flashes red**  
(water tank empty)
  - **lights up yellow**  
(machine requires descaling)



**Make espresso**



**Make caffè crema**



**Make black coffee**

**Switch the machine on**  
(press any button)



**Switch the machine off**  
(press Espresso + Caffè crema buttons simultaneously)



## Removing protective films and packaging materials

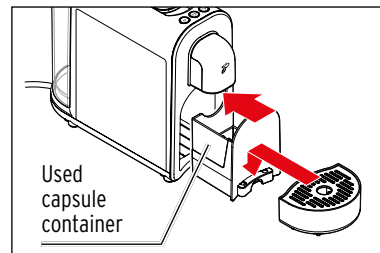
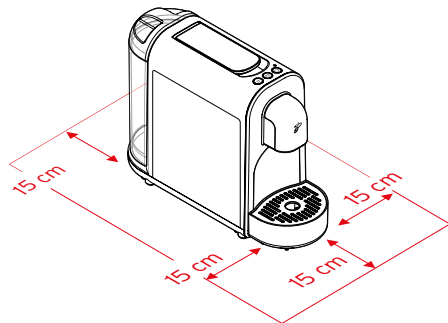
1. Take the machine out of the packaging.
2. Pull all protective films off the machine and remove all packaging materials and adhesive transport protection strips.



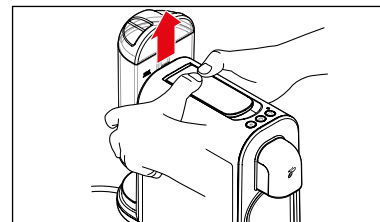
The packaging materials protect the machine during transport. Keep the packaging in case you need to transport or return the machine.

## Initial operation – prior to first use

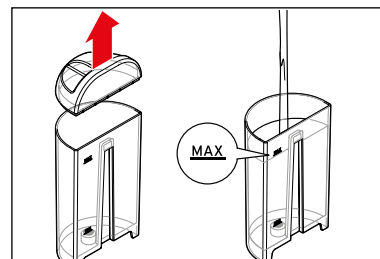
1. Set up the machine ...
  - ... on a level worktop or surface that is not sensitive to moisture.
  - ... near a power socket. The length of the connection cable is approx. 80 cm.
  - ... at a distance of at least 1 m away from hot, flammable surfaces (hobs, ovens, radiators, etc.).
  - ... at least 15 cm away from walls.



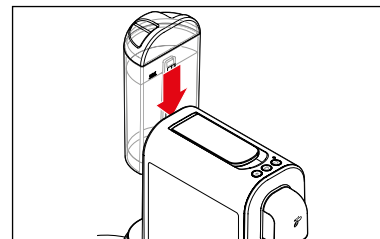
2. Make sure that the used capsule container is correctly inserted into the front drawer. Push the front drawer all the way into the housing.
3. Insert the drip tray.



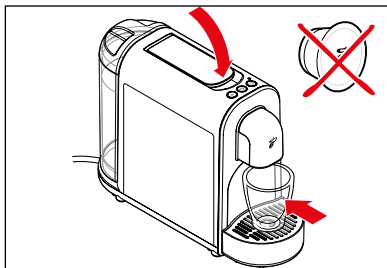
4. Hold the water tank by the sides as shown and push it up and out.
5. Clean the water tank as described in the chapter "Machine care" under "Cleaning the water tank".



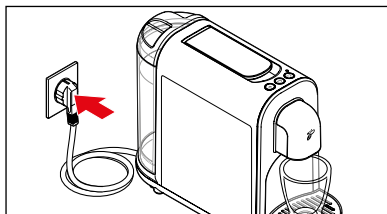
6. Fill the water tank with fresh, cold tap water or drinking water up to the **MAX** marking.



7. Reinsert the water tank into the machine. Press it down into the groove as far as it will go.



- Push down the lever if necessary **without inserting a capsule.**
- Place an empty cup or similar underneath the beverage spout.



- Insert the mains plug into an easily accessible power socket.

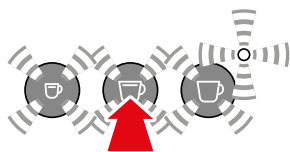
**CAUTION -**  
risk of scalds/burns

Hot water or hot coffee coming out of the beverage spout can cause scalds.

- Do not touch the beverage spout during or immediately after use. Avoid coming into contact with the beverage coming out of the spout.



- Press any button to switch on the machine.  
You will hear a short beep.



The indicator light flashes yellow and the buttons flash white.

- Press the **Caffè crema** button.

The pump will start to operate. As soon as the pipes are filled with water, the pump stops automatically. A small amount of water will run into the cup beneath the spout. You will then hear two beeps.



All buttons will flash; the machine is heating up to make a beverage.



The machine will beep once it has heated up. All buttons will now light up continuously.



- Pour away the water that is in the cup underneath and rinse the machine twice as described in the chapter "Rinsing the machine".  
The machine is then ready for use.

## Rinsing the machine

**CAUTION -**  
risk of scalds/burns

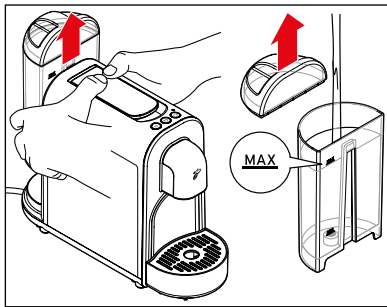
Hot water or hot coffee coming out of the beverage spout can cause scalds.

- Do not touch the beverage spout during or immediately after use. Avoid coming into contact with the beverage coming out of the spout.

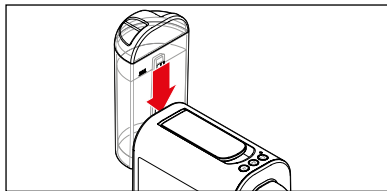
After switching the machine on for the first time, or if you have not used the machine for longer than 2 days, rinse the machine by allowing 2 cups of water to flow through (without a capsule).

Requirements:

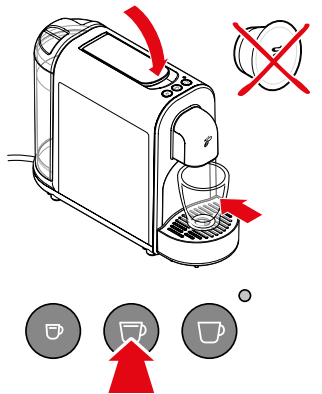
- The machine is switched on. The  buttons light up constantly.
- There is no capsule in the capsule opening.**



1. Hold the water tank by the sides as shown and push it up and out.
2. Fill the water tank with fresh, cold tap water or drinking water up to the **MAX** marking.



3. Reinsert the water tank into the machine. Press it down into the groove as far as it will go.



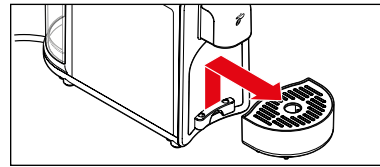
4. Push down the lever as necessary **without inserting a capsule**.
5. Place an empty cup or similar underneath the beverage spout.
6. Press the **Caffè crema** button.

The pump will rinse the pipes with water, which will then run into the cup underneath. You will hear a beep at the end of the rinsing process.

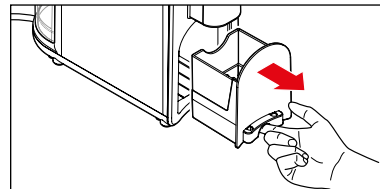


7. Pour the water away.
8. Repeat steps 5 to 7.

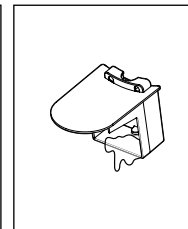
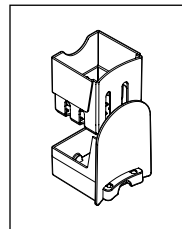
9. Finally, empty the front drawer and, if necessary, the used capsule container:



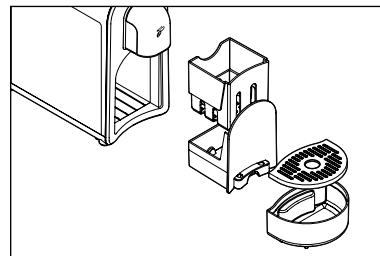
- ▷ Lift off the drip tray.



- ▷ Pull out the front drawer as illustrated.



- ▷ Remove the used capsule container (figure to the left).
- ▷ Empty the front drawer and, if necessary, the used capsule container (figure to the right).



- ▷ Reinsert all parts into the machine in reverse order.

## The finest aroma – the finest flavour

### One capsule per cup

Each capsule is portioned for one cup of black coffee, caffè crema or espresso.

### Full-bodied aroma

Only insert a capsule when you intend to use the machine. The capsule is pierced as it is inserted. If it is not used immediately, the aroma will fade.

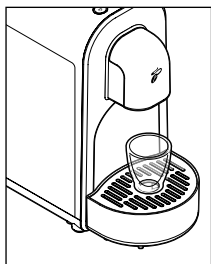
### Pre-heating the cup

Fill the cup with hot water and then pour it away shortly before using the cup. This will ensure your coffee tastes its best.

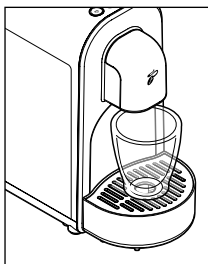
### Beverage strength

Adjust the strength of the beverage to suit your personal taste by adjusting the amount of water. This is very easy to do, and is described in the chapter "Adjusting beverage strength (beverage volume)".

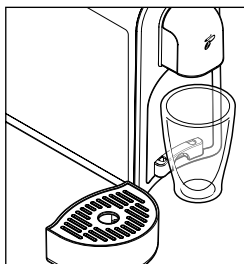
## Using large / small cups or glasses



For small cups and ...



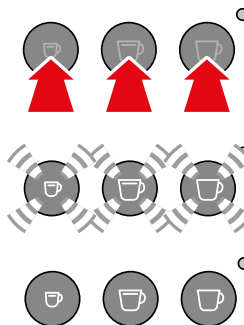
... for coffee cups leave the drip tray and drip grid in place.



For large glasses or to-go cups, remove the drip tray.

## Switching the machine on/off

### Switching the machine on

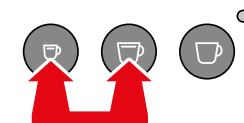


▷ Press any button to switch on the machine.  
You will hear a short beep.

All buttons will flash; the machine is heating up to make a beverage.

The machine will beep once it has heated up.  
All buttons will light up continuously.


### Switching the machine off



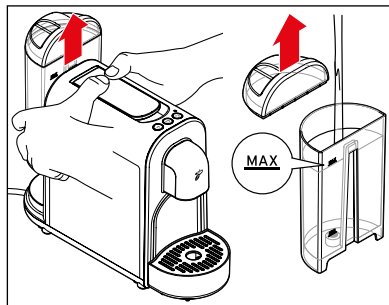
▷ To switch the machine off, briefly press the **Espresso** and **Caffè crema** buttons at the same time.

## Standby mode

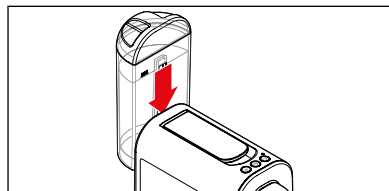
If no button is pressed for about 9 minutes, the machine will automatically switch to standby mode. All of the button lights will go out. The machine will then use very little energy. This is both a safety function and a way to save energy. However, we recommend that you always switch the machine off manually after use.

 To disconnect the machine from the mains power completely, remove the mains plug from the power socket.

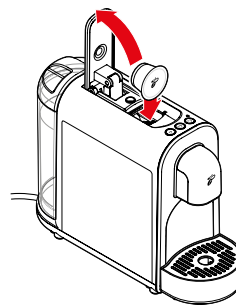
## Filling the water tank



1. Hold the water tank by the sides as shown and push it up and out.
2. Fill the water tank with fresh, cold tap water or drinking water up to the **MAX** marking.



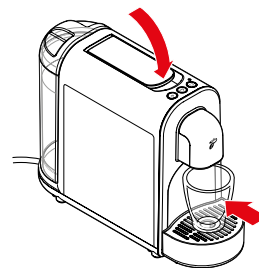
3. Reinsert the water tank into the machine. Press it down into the groove as far as it will go.



1. Push up the lever as far as it will go and insert a Cafissimo capsule as illustrated with the lid facing forwards.



The capsule must be intact: Do not pierce it and do not remove the capsule lid or insert a misshapen capsule!



2. Push down the lever completely. This pierces the base and lid of the inserted capsule.
3. Place an empty cup underneath the beverage spout.

## Preparing beverages



**CAUTION -**  
risk of scalds/burns

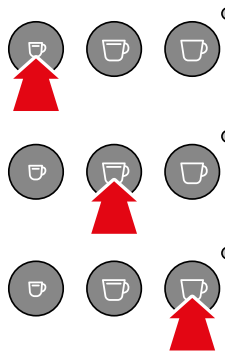
Hot water or hot coffee coming out of the beverage spout can cause scalds.

- Do not touch the beverage spout during or immediately after use. Avoid coming into contact with the beverage coming out of the spout.

Requirements:

- The machine is switched on. The , ,  buttons light up continuously.
- The water tank is full.

4. Press the button that corresponds to the capsule you have inserted:

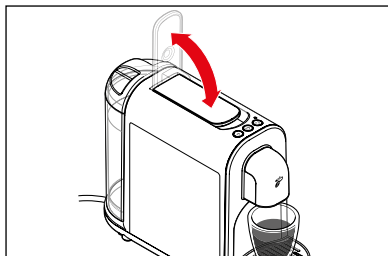


**Espresso,**

**Caffè crema or**

**Black coffee.**

The brewing process starts and stops automatically. You will hear a beep at the end of the brewing process.



5. Before removing the coffee cup from the drip grid, push up the lever as far as it will go and then down again.

The pressure is released from the machine and the used capsule falls into the container. Residual liquid may leak out of the beverage spout.

▷ If you would like to stop the brewing process prematurely, press the same beverage button again while brewing.

**i** Making espresso and caffè crema involves pre-brewing a small amount of coffee. This is to allow the flavours to develop fully. This process can be identified by the short pause at the beginning of the brewing process. Black coffee is made without pre-brewing.

Default settings upon purchasing the machine:

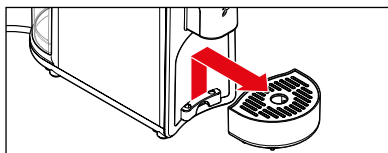
**Espresso** approx. 40 ml / **Caffè crema** approx. 125 ml /

**Black coffee** approx. 125 ml

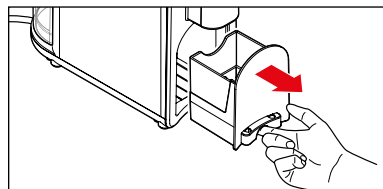
**Tip:** You can adjust the strength of the beverage by adjusting the amount of water. Refer to the chapter titled “Adjusting beverage strength (beverage volume)” for information on how to do this.

## After use

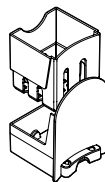
▷ Empty and clean the front drawer, used capsule container and drip tray regularly.



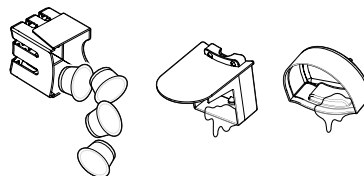
1. Lift off the drip tray.



2. Pull out the front drawer as illustrated.



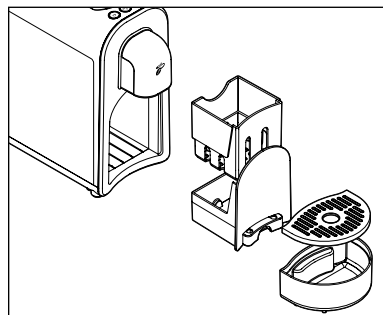
3. Remove the used capsule container. The used capsule container must be emptied daily or when it is full. The used capsule container holds approx. 6 capsules.



4. Empty the used capsule container.

5. Empty the front drawer.

6. Empty the drip tray if necessary.






7. Reinsert all parts into the machine in reverse order.

## Adjusting beverage strength (beverage volume)

Adjust the strength of the beverage to suit your personal taste by adjusting the beverage volume. You can do this for one specific brewing procedure or save the setting.

Requirements:

- The machine is switched on. The , ,  buttons light up continuously.
- There is a cup or glass placed underneath the beverage spout.
- The water tank is full.
- A capsule is inserted.

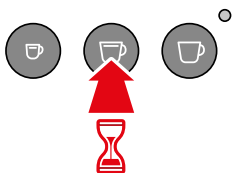
### Adjusting the strength for the current brewing procedure (setting is not saved)

- ▷ If the beverage is **too weak** for your taste, you can stop the water flow prematurely by pressing the flashing beverage button.
- ▷ If the beverage is **too strong** for your taste, simply start the brewing process again without inserting a new capsule. Then press the flashing button again as soon as sufficient water has run through.

Default settings upon purchasing the machine: **Espresso** approx. 40 ml / **Caffè crema** approx. 125 ml / **Black coffee** approx. 125 ml

### Setting a permanent beverage strength (setting is saved)

You can also permanently change the factory settings for beverage volumes. This ensures that your favourite beverage is brewed exactly the way you like it. You can customise one setting for each beverage button (espresso, caffè crema and black coffee):



1. Press and hold the respective button (e.g. **Caffè crema**).

You will hear a beep after approx. 2 seconds.

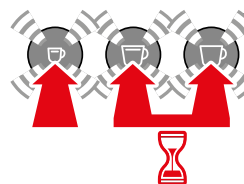
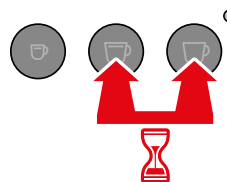
2. Release the beverage button as soon as the desired amount of coffee has been dispensed in the cup.

When the button is released, the volume is saved permanently. Two beeps sound in confirmation.

- ▷ If the newly set beverage volume does not suit your taste, change it by simply repeating steps 1 and 2 with a new capsule.

## Restoring the factory settings

To reset to the original beverage volumes, proceed as follows:



1. Switch the machine off.  
To do so, briefly press the **Espresso** button and the **Caffè crema** button simultaneously.
2. Then hold down the **Caffè crema** and **Black coffee** buttons simultaneously.
3. In addition, briefly press the **Espresso** button once.  
All buttons flash to confirm.
4. Now release all the buttons.

The factory settings for beverage volumes have been restored.

## Machine care



### **DANGER** - electricity

Electric shock can cause serious injuries and/or death.

- Remove the mains plug from the power socket before cleaning the machine.
- Never immerse the machine, mains plug or connection cable in water or any other liquids.
- Do not clean the machine with a water jet. Clean it only as described in the following instructions.

### **NOTICE** - material damage

Incorrect cleaning or lack of cleaning can damage the machine.

- Do not use any caustic, aggressive or abrasive products for cleaning.

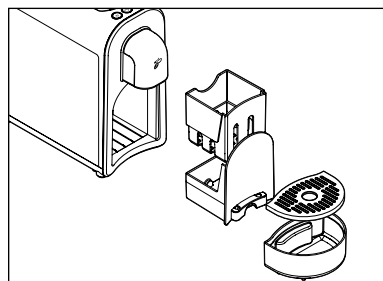
	Daily	Weekly	As required
Machine housing		X	X
Clean the water tank		X	X
Rinse the water tank	X		X
Used capsule container, front drawer	X		X
Drip tray, drip grid			X

### Cleaning the water tank

Clean the water tank in water with a little washing-up liquid. Then rinse it out thoroughly under running water and dry it.

**The water tank is not dishwasher-safe.**

### Cleaning the used capsule container and drip tray/grid

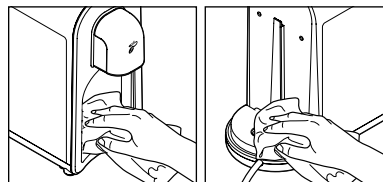


1. Lift off the drip tray.
2. Remove the drip grid from the drip tray and empty the drip tray.
3. Pull out the front drawer and remove the used capsule container.
4. Empty the used capsule container.

5. Wash all individual parts with water and washing-up liquid. Then dry all parts thoroughly. The drip tray and drip grid, front drawer and used capsule container can also be cleaned in the dishwasher.
6. Then reinsert all parts into the machine.

### Cleaning the housing

▷ Wipe the housing with a soft, damp cloth.



▷ Wipe the compartment for the used capsule container and the receptacle for the water tank as required using a soft, damp cloth.

## Descaling



If the indicator light lights up yellow, the machine needs to be descaled. Do this within the next couple of days. Do not wait any longer, otherwise so much limescale may collect that a descaling agent will no longer have any effect.

**Descaling takes approx. 30 minutes.**

### NOTICE - material damage

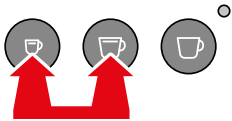
Incorrect or insufficient descaling can damage the machine.

- **Descale the machine as soon as it indicates that this is necessary (after approx. 50 litres).**

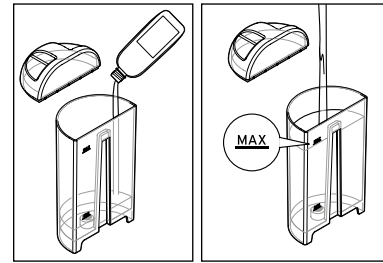
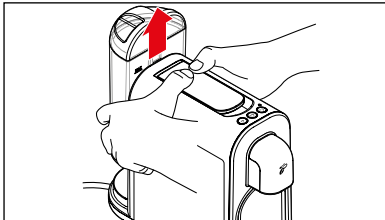
This increases its service life and saves energy.

- Do not use any descaling agents made on the basis of formic acid.
- Use a standard, liquid descaling agent suitable for coffee and espresso machines. Other agents may damage materials in the machine and/or have no effect.

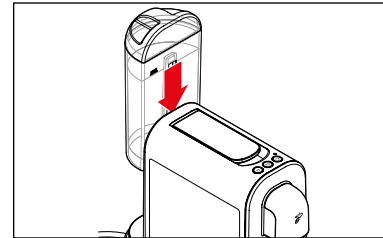
To descale the machine, proceed as follows:



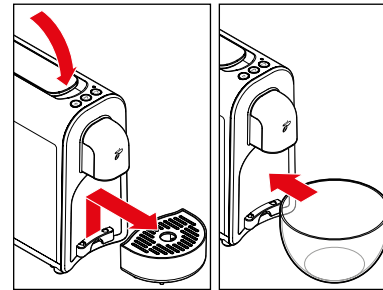
1. Switch the machine off:  
To do so, briefly press the **Espresso** button and the **Caffè crema** button simultaneously.
2. Hold the water tank by the sides as shown and push it up and out.



3. Pour a standard, liquid descaling agent suitable for coffee and espresso machines into the **empty** water tank.
4. Add cold tap water **up to the MAX** marking.

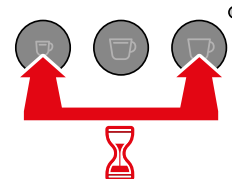


5. Reinsert the water tank into the machine. Press it down into the groove as far as it will go.

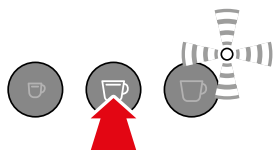


6. Push down the lever if necessary and remove the drip tray.
7. Place an empty container with a capacity of at least 800 ml under the beverage spout.

**i** You will need to empty the container underneath several times during the descaling process.



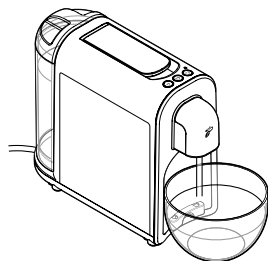
8. Press and hold the **Espresso** button and the **Black coffee** button **at the same time** for approx. 5 seconds until ...



9. ... the **Caffè crema** button lights up and the indicator light flashes alternately between red/yellow. Press the **Caffè crema** button to start descaling.



The descaling process begins. The **Caffè crema** button will go out and the indicator light will flash alternately between red/yellow. **The procedure takes approx. 25 minutes.**



The machine pumps descaling solution into the pipes several times in 2.5-minute intervals. At each interval about 60 ml is dispensed into the container below.

10. Do not leave the machine unattended during the descaling process. Make sure you pour out the water in the container underneath in time to prevent the container from overflowing.



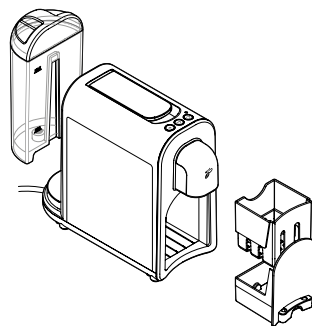
**Once all of the descaling solution has passed through the system, the machine stops for approx. 2.5 minutes.**

The indicator light will continue to flash alternately between red/yellow.

11. Wait until you hear a beep.



The **Caffè crema** button will light up again and the indicator light will flash alternately between red/yellow.

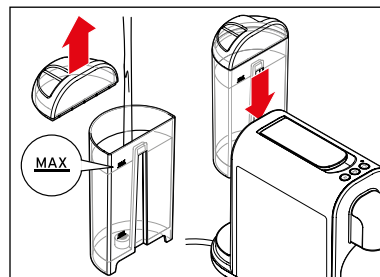


12. Remove the water tank, the front drawer and the used capsule container from the machine.
13. Wash all individual parts with water and washing-up liquid. Dry all parts thoroughly.

14. Reinsert all parts except for the water tank into the machine.

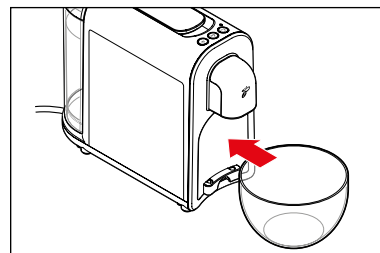
Now continue with the rinsing process to rinse all descaling agent residues from the pipes.

### Rinsing process

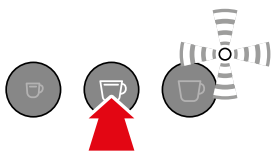


15. Fill the water tank with cold tap water up to the **MAX** marking.

16. Reinsert the water tank into the machine. Press it down into the groove as far as it will go.



17. Place an empty container with a capacity of at least 700 ml under the beverage spout.

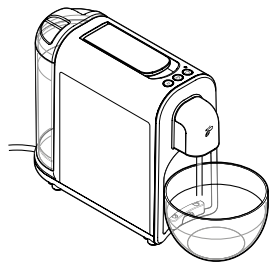


18. Press the **Caffè crema** button to start the rinsing process.



The rinsing process will begin. The **Caffè crema** button will go out and the indicator light will flash yellow.

**The procedure takes approx. 2 minutes.**



The machine pumps tap water through the pipes to rinse out all residues of the descaling agent. Approx. 700 ml of water will be rinsed through the system.

19. Keep an eye on the container and empty it before it overflows.

When the rinsing process is complete, the machine will automatically switch into standby mode.

The descaling process is complete.

## Problems / solutions

The machine stops while the beverage is being prepared. There are several beeps. The beverage button that was pressed previously flashes and the indicator light flashes red. You will hear several beeps.

### Is the water tank empty?

1. Fill the water tank with fresh water and insert it in the machine.
2. Press the flashing beverage button. The previously started process will continue.

During the first use of the machine (initial start-up), the indicator light flashes red and several beeps sound.

### Have you inserted a capsule?

1. Push up the lever so that the used capsule falls into the container and the pressure can be released from the machine.
2. The initial start-up must be repeated. Proceed as described in the chapter "Initial operation - prior to first use".

There are coffee grounds in the cup.

A residue of coffee grounds always remains at the bottom of the cup. This is a feature of the system and is not a fault.

The beverage is not hot enough.

Especially with espresso, the beverage amount is so small compared to the size of the cup that it cools down quickly.

Pre-heat the cup:

- ▷ Fill the cup with hot water and then pour it away shortly before using the cup.

Water is dripping from the beverage spout.

The water in the system expands as the machine heats up. This causes a little water to drip from the beverage spout.

The indicator light lights up yellow.

The machine needs to be descaled. Do this within the next couple of days. Do not wait any longer, otherwise so much limescale may collect that a descaling agent will no longer have any effect. A self-induced defect of this kind is not covered by the warranty.

- ▷ Proceed as described in the chapter "Descaling".

---

The lever cannot be pushed down.

- ▷ Check whether the used capsule container is full. Empty it if necessary.
- ▷ If a capsule is trapped in the capsule opening, push up the lever completely and use a thin object to push the capsule through the capsule feed from top to bottom. Do not reinsert a capsule if it is deformed!

---

The rinsing process does not finish; the water tank is empty, the indicator light is flashing red and the machine is beeping.

**The water tank must be filled to the MAX marking during the rinsing process.**

1. Fill the water tank with cold tap water **up to the MAX marking** and reinsert the container into the machine.
  2. Continue with step 17 in the chapter "Descaling", section "Rinsing process".
- 

## Disposal

The product and its packaging have been manufactured from valuable materials that can be recycled. Recycling reduces the amount of refuse and preserves the environment.

Dispose of the **packaging** at a recycling point which sorts materials by type. Make use of the local facilities provided for collecting paper, cardboard and light-weight packaging.



**Appliances** marked with this symbol must not be disposed of along with normal household waste!

You are legally obliged to dispose of old appliances separately from household waste. Electronic appliances contain hazardous substances and, if stored or disposed of improperly, may cause harm to health and the environment. Information about collection points where old appliances can be disposed of free of charge is available from your local authorities.

## Declaration of Conformity

Tchibo GmbH hereby declares that this product is in compliance with the essential requirements and other relevant provisions of the following directives at the time of its being placed on the market:

- 2006/42/EC - Machinery Directive (until 19 January 2027) and (EU) 2023/1230 - Machinery Regulation (from 20 January 2027)
- 2014/30/EU - EMC Directive
- 2009/125/EC - Ecodesign Directive
- 2012/19/EU - WEEE
- 2011/65/EU - Restriction of the use of certain hazardous substances in electrical and electronic equipment



Enter the product number in the search box at [www.tchibo.de](http://www.tchibo.de) - you will be directed to the product page where you can download the full Declaration of Conformity.

## Technical specifications

Type / Model:	MCA25109
Product number:	see chapter "Product number"
Mains voltage:	220-240 V ~ 50 Hz
Power:	1250 W
Power consumption when switched off (standby):	<0.5 W
Automatic switch-off:	after approx. 9 minutes
Protection class:	I
Pump pressure:	max. 15 bar
Sound pressure level:	<70 dB(A)
Ambient temperature:	+10 to +40 °C
Factory set brewing volumes:	Black coffee approx. 125 ml Caffè crema approx. 125 ml Espresso approx. 40 ml
Made exclusively for:	Tchibo GmbH, Überseering 18, 22297 Hamburg, Germany



## Warranty

Tchibo GmbH grants a **24-month warranty** from the date of purchase.

Tchibo GmbH, Überseering 18, 22297 Hamburg, Germany

We will remedy all defects in workmanship or materials **within the warranty period**.

In order for the warranty to be granted, all warranty claims must be accompanied by

proof of purchase from Tchibo or from an authorised Tchibo distribution partner.

This warranty is valid within the EU, Switzerland and Turkey.

**The warranty does not cover** worn parts, consumables, or damage resulting from improper use or inadequate descaling. Parts and consumables can be ordered from our Cafissimo service.

This warranty does not restrict **statutory warranty rights**. Statutory warranty rights can be asserted free of charge.

---

## Service and repair

If, contrary to our expectations, a defect is found, please contact our Cafissimo service.

Our customer consultants will be happy to advise you on further procedure.

If you have any questions relating to product information, ordering accessories or servicing, please contact our Cafissimo service.

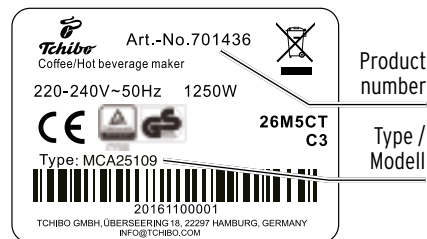
Please have the product number to hand in case of any queries.

---

## Cafissimo service

Email: [service@tchibo.de](mailto:service@tchibo.de)

## Product number



Product  
number

Type /  
Modell

You can find your Cafissimo's product number on the type plate on the bottom of the housing.

Before laying the Cafissimo on its side, remove the water tank, drip tray and front drawer with the used capsule container.

Place a cloth or mat underneath to protect surfaces from any residual coffee or water that may leak out.