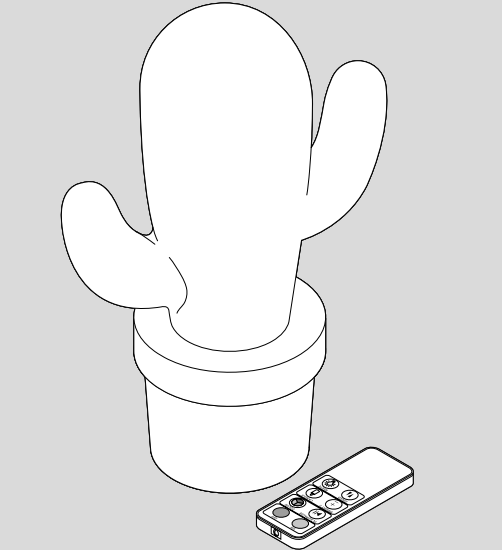
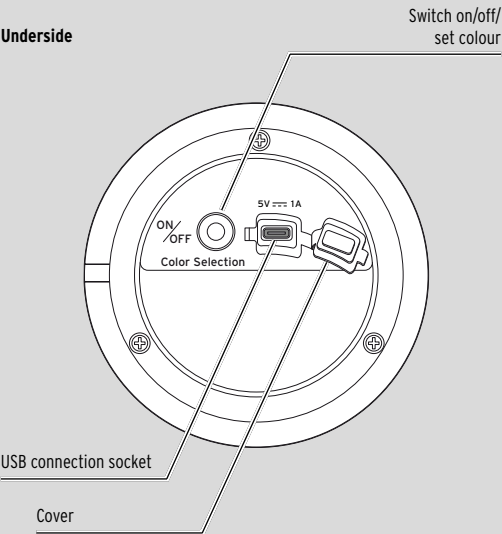


Rechargeable LED table lamp

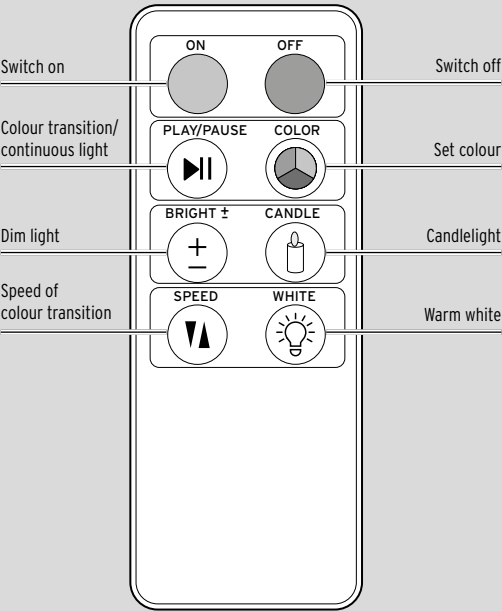
Instructions for use



Underside



Remote control



Also included (not illustrated):  
USB-C charging cable



For your safety



Read the safety warnings carefully and only use the product as described in these instructions to avoid accidental injury or damage. Keep these instructions for future reference. If you give this product to another person, remember to also include these instructions.

The lamp is only suitable for decoration in private homes and not for lighting whole rooms. The product has been designed for both indoor and outdoor use. It has been designed for private use and is not suitable for commercial purposes.

Danger to children

- Swallowing batteries can be fatal. The remote control is fitted with a coin battery. If a coin battery is swallowed, it can cause severe internal chemical burns and even death within 2 hours. Keep both new and used batteries out of the reach of children. If the battery compartment does not close correctly, discontinue use of the remote control and keep it out of the reach of children. If you think that a battery has been swallowed or has got into the body in any other way, seek medical advice immediately.
- Children are not aware of the risks involved in handling electrical appliances incorrectly. Therefore keep the product away from children.
- Keep the packaging materials out of the reach of children. They pose several risks, including the risk of suffocation!

Danger due to electricity when charging the battery

- Only charge the lamp in dry indoor areas.
- The product is suitable for outdoor use and complies with protection type IP44 when the USB connection socket is securely closed. This means that the product is protected against contact with tools, wires and foreign objects with a diameter larger than 1 mm and splashes of water, such as rain. However, protect it from heavy rain and streams of water. Never use the product under water. This will immediately result in a short circuit and poses a risk of an electric shock.
- Do not position the product in hollows or depressions where puddles might form.
- Use only suitable mains adapters for charging the product. Do not use a faulty mains adapter and do not attempt to repair a faulty mains adapter.
- Only connect the lamp to a properly installed power socket with a voltage that complies with the technical specifications of the mains adapter used.
- The power socket used must be easily accessible so that you can quickly unplug the mains adapter whenever necessary. Route the charging cable in such a way that it cannot be tripped over.
- Remove the mains adapter from the power socket if malfunctions occur during charging, during thunderstorms and before cleaning the lamp.

Danger due to explosion/fire/burns

- You cannot and must not attempt to replace or remove the built-in rechargeable battery in the lamp yourself. There is a risk of explosion if the battery is replaced incorrectly. The battery should be replaced only with an identical or equivalent type. If the rechargeable battery is defective, contact a specialist workshop.
- Do not cover the lamp during charging.
- Warning!** Lithium batteries can explode ...

... if they are exposed to extreme heat, such as sunlight, fire, etc., or extremely low air pressure during use, storage or transport. Only use the lamp in moderate climatic conditions.

... if they are taken apart, thrown into fire or short-circuited. Do not place any naked flames such as burning candles near the lamp. The lamp must be kept away from candles and other naked flames at all times to prevent the spread of fire.

- Do not modify and/or deform/heat/dismantle rechargeable batteries. Do not immerse them in water either.

The product contains a lithium battery (coin battery).

There is a risk of leakage, gas emissions, explosion and fire:

- Warning!** Lithium batteries can explode if inserted incorrectly. Therefore, ensure that the polarity (+/-) is correct when inserting the batteries. Use only batteries of the same or of equivalent type (see "Technical specifications").
- Batteries must not be taken apart or crushed, thrown into fire or a hot oven or short-circuited. In addition, single-use batteries must not be charged. Do not modify and/or deform/heat/dismantle single-use batteries. Do not allow damaged batteries to come into contact with water.

Single-use batteries must not be overdischarged. Keep unused batteries in the original packaging. Unpacked batteries (either new or partially/fully used) must be stored in an orderly fashion so that their contacts cannot touch each other. Also keep them away from metal objects.

- Batteries exposed to excessive heat, direct sunlight, extremely low air pressure (e.g. at high altitudes) or extreme temperatures can explode or leak flammable liquids or gases.
- Protect batteries from excessive heat, direct sunlight and extreme air pressure levels and temperatures.
- If necessary, clean the battery and device contacts in the remote control before inserting the battery. Risk of overheating!

Warning – danger due to improper use

- Do not make any modifications to the product. Have repairs to the product carried out only by a specialist workshop. Improper repairs can result in considerable danger to the user.
- Do not use the lamp if it shows visible signs of damage or if it has fallen down.

Risk of injury

- If a battery has leaked, avoid all contact with skin, eyes and mucous membranes. If necessary, rinse the affected areas with water and consult a doctor immediately.

Material damage

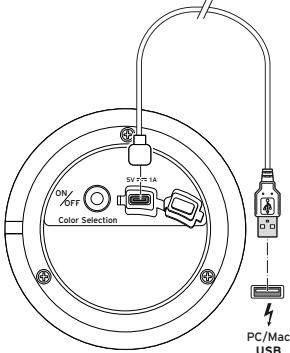
- Never immerse the lamp in water or other liquids. Protect the lamp from knocks, falls, direct sunlight and extreme temperatures.
- Remove the battery from the remote control when it is flat or if you do not intend to use the remote control for a longer period of time. This will help prevent damage caused by leakage.
- The built-in LEDs cannot be replaced.
- The product is not designed to withstand strong winds, storms, etc.! Stow the product in a sheltered location if strong winds or storms are forecast.
- Do not use caustic or abrasive agents or hard brushes, etc. for cleaning.

Prior to first use

Charging the battery in the lamp

The rechargeable battery comes in a half-charged state. This is to prevent it from becoming damaged. Charge the battery fully by connecting it to the power supply via a USB mains adapter (not included) before using the product for the first time.

- You can use the lamp in a dry room indoors while the battery is charging, however, this will increase the charging time slightly.

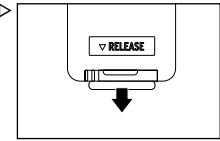


- Pull the cover off the USB connection socket on the underside of the lamp.
- Connect the provided USB-C charging cable to the USB connection socket and to a suitable USB mains adapter (see "Technical specifications").
- Insert the mains adapter into a mains socket. The charging indicator light lights up red while the battery is charging.
- After charging, unplug the mains adapter from the power socket and the USB-C charging cable from the lamp and the mains adapter.
- Carefully** close the USB connection socket again with the cover.

Information on rechargeable batteries

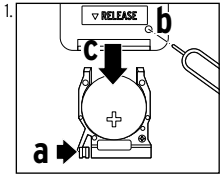
- To preserve the rechargeable battery's full capacity for as long as possible, you should fully recharge the battery every 2 to 3 months, even if you do not use the product.
- Charge the battery in an environment between +10 and +40 °C.
- The battery will best hold its charge at room temperature. The lower the ambient temperature, the shorter the operating time.

Activating the battery in the remote control

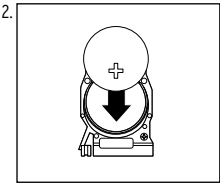


Remove the insulating strip from the battery compartment when using the product for the first time. The remote control is now ready for use.

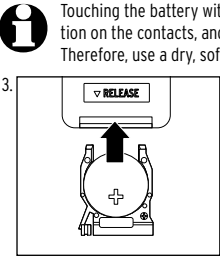
Inserting and changing the battery



Push the locking mechanism to the side (a), pierce the opening in the battery compartment with a pointed object (b) and pull out the battery holder (c).



Replace the flat battery with a new one. When doing so, make sure that the polarity is correct (+ symbol facing upwards).



Touching the battery with bare hands may cause contamination on the contacts, and this may have an insulating effect. Therefore, use a dry, soft cloth to insert the battery.

Push the battery holder completely into the remote control. You must hear and feel it click into place.

Use

Controls on the lamp

- Press the **ON/OFF Color Selection** button on the lamp to turn it on.
- Briefly press the **ON/OFF Color Selection** button to select the desired colour:

Warm white > red > green > blue > yellow > orange > pink > violet > warm white etc.

The selected colour will show permanently.

- Press the **ON/OFF Color Selection** button for approx. 2 seconds to switch the lamp off.

Controlling via the remote control

- Point the remote control at the lamp. The lamp must not be obscured by other objects, as this prevents radio communication.

- ON:** Switch on
- OFF:** Switch off
- PLAY/PAUSE:** The light transitions smoothly from colour to colour. The colour lights up permanently.
- COLOR:** Set the desired colour permanently: Warm white > red > green > blue > yellow > orange > pink > violet > warm white etc.
- BRIGHT:** Dim the light: Bright > dimmer > dim > very dim > bright etc.
- CANDLE:** Imitates candlelight.
- SPEED:** Set the light transition speed: Slow > faster > fast > very fast > slow etc.
- WHITE:** Permanently warm white.

- When you switch the lamp on, it lights up in the colour and mood that was last set.
- The lamp switches off automatically after 7 hours of operation.

Technical specifications

Model:	LG2501
Product number:	725 561
Rechargeable battery:	lithium-ion 3.7 V DC 1200 mAh, Watt-hour rating: 4.44 Wh (tested as per UN 38.3) (non-replaceable)
Input:	DC 5 V/1 A
Charging time:	approx. 2.5 hours
Operating time:	up to approx. 11 hours (with permanent warm white light)
Power consumption in off mode:	≤ 0.1 W
IP code:	IP44
Mains adapter (not included):	
Input:	AC 100-240 V 50/60 Hz
Output:	DC 5 V 1 A
Remote control:	
Single-use battery:	1x CR2025 / 3 V Watt-hour rating: 0.45 Wh (tested as per UN 38.3)
Range:	max. 4 m (with direct visual contact between remote control and lamp)
Manufactured by:	GRENDS GmbH, Stahltwiete 23, 22761 Hamburg, Germany www.grends.de

Disposal

The product and its packaging have been manufactured from valuable materials that can be recycled. Recycling reduces the amount of refuse and preserves the environment. Dispose of the **packaging** at a recycling point that sorts materials by type. Make use of the local facilities provided for collecting paper, cardboard and lightweight packaging.



**Appliances, single-use batteries and rechargeable batteries** marked with this symbol must not be disposed of along with household waste! You are legally obliged to dispose of old appliances separately from household waste. Electronic appliances contain hazardous substances and, if stored or disposed of improperly, may cause harm to health and the environment. Information about collection points where old appliances can be disposed of free of charge is available from your local authorities.

Flat single-use and rechargeable batteries must be handed in at a local authority collection point or returned to a battery retailer. Tape off the contacts of lithium single-use/rechargeable batteries prior to disposal.

**Warning!** This appliance contains a battery that, for safety reasons, is firmly built into the appliance. It cannot be removed without destroying the casing. Improper disassembly leads to safety hazards. For this reason, take the appliance intact to a collection point where the appliance and battery will be disposed of properly.

**Information about the built-in rechargeable battery:**  
**Manufacturer:** Shenzhen Golden Shield Core Energy Technology Co., LTD  
**Address:** 8/F, 868 Meilong Road. Longhua District, Shenzhen  
**Email:** 185485377@qq.com **Manufacturing date:** 2025-09  
**Made in:** China / China

**Information about the supplied single-use battery:**  
**Manufacturer:** DONGGUAN TIANQIU ENTERPRISE CO., LTD  
**Address:** TianQiu Industrial Park, Xinji Industrial Zone, MachongTown, Dongguan, Guangdong, P. R. China  
**Email:** qd@gdtianqiu.com **Manufacturing date:** 2025-09  
**Made in:** China / China