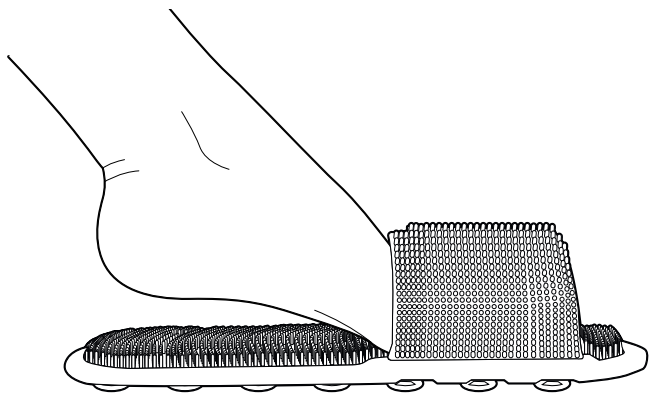


Foot cleaning and massage shoe



Important information for safety and use

Read the safety warnings carefully and only use the product as described in these instructions to avoid accidental injury or damage.

Intended use

This product is designed to comfortably clean, massage and pamper your feet while standing up or sitting on a shower stool. The cleaning/massage shoe can be used with both the left and right foot.

The product is intended for private use. It is not suitable for medicinal or therapeutic purposes. The product is not suitable for commercial use in the field of cosmetics or medical foot care.



The cleaning/massage shoe is not suitable for wearing while walking around on smooth surfaces because the suction cups on the bottom of the shoe will stick to the floor. Risk of falling!

Product number: 725 043

Attaching the cleaning/massage shoe using suction cups



There is a danger of slipping if the cleaning/massage shoe comes into direct contact with bath oil!

If using the cleaning/massage shoe while standing up:

- ▷ Bath and shower products as well as baths and showers with a porous enamel base will impair the strength of the suction cups, which could turn the cleaning/massage shoe into a slipping hazard. Only add bath products to the running water after the cleaning/massage shoe has been secured.
- ▷ Wet the clean base of the tub with clear water before placing the cleaning/massage shoe onto it. Press all suction cups firmly into place. Test the non-slip function of the shoe before stepping in.
To use the shoe when dry, simply attach it to the tiled floor in the bathroom.

Use

You can use the shoe when dry to massage your feet and also when wet to clean your feet while showering.

Cleaning your feet

- ▷ Add some shower gel or liquid soap to the bristles if necessary and move your feet over them.
- ▷ Rinse your feet thoroughly under running water afterwards to prevent you from slipping over in the shower.

Cleaning the cleaning/massage shoe after use

- ▷ Rinse the cleaning/massage shoe after each use with clear warm water to remove foam and soap residue.
- ▷ Hang the cleaning/massage shoe on a hook or leave it on the side to dry so that any residual water can drain off. Do not expose the product to direct sunlight and do not dry it on heaters or radiators!
- Do not use caustic or abrasive agents or hard brushes, etc. for cleaning.

