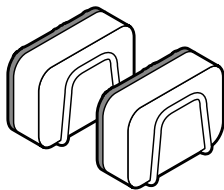


# Sponge holders

Product number: 718 904

Made exclusively for:  
Tchibo GmbH, Überseering 18,  
22297 Hamburg, Germany



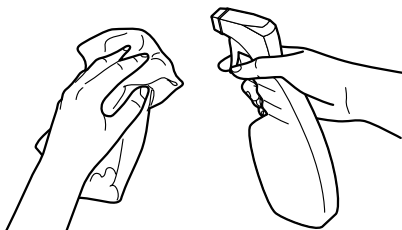
## Important notes

To ensure that the sponge holders adhere properly to the wall, observe the following instructions:

- The adhesive film adheres to all smooth and flat surfaces, such as mirror or glass surfaces, tiles, sinks, etc. Do not affix the holders over joints or other irregularities. The adhesive film will not adhere to a textured or painted surface or to an oiled wooden surface.
- The adhesive film is intended for permanent attachment. Avoid attaching the holder to a sensitive surface if you want to remove it again later. It is possible that the substrate will bond with the adhesive layer. When removing the holders, the paint, coating or similar finish may come away from the substrate. In most cases, adhesive residues on wood or other firm surfaces can be removed with cooking oil.
- The surface must be free from dust, grease, silicone and limescale. Clean and degrease the surface with pure alcohol (isopropyl) or methylated spirits if it is not absolutely clean. Bathroom and all-purpose cleaners are not suitable. Gently pre-dry the cleaned area and then leave it to dry completely.
- The best adhesive strength can be attained at temperatures between 23 °C and 40 °C.
- Do not use abrasive or caustic products or hard brushes, etc. for cleaning. Clean the sponge holders with a slightly damp cloth as needed and wipe them down with a dry cloth.
- The maximum load per sponge holder is 1 kg. Do not overload the holders. Only attach sponges and light kitchen utensils to the holders.

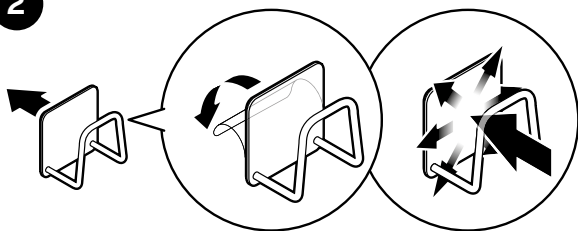
## Installation

1



**Thoroughly** clean the surface with a damp cloth and a mild cleaning agent (e.g. glass cleaner, vinegar or rubbing alcohol [isopropyl]) if necessary. Then let the cleaned area dry thoroughly.

2



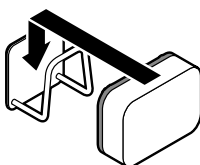
Remove the protective film from the back of the sponge holder and press the holder firmly onto the cleaned area for approx. 10 seconds as shown. After approx. 30 minutes, press it again for approx. 10 seconds.

3



After a further 24 hours, the sponge holders are ready for use.

4



Insert the sponge or the desired utensil into the holder.