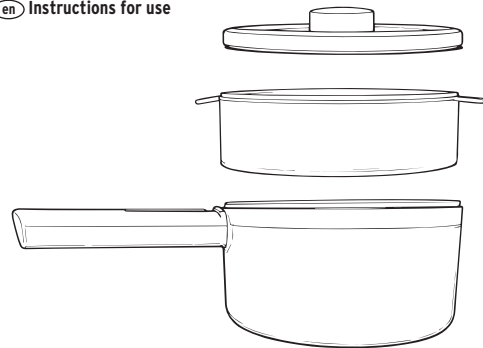
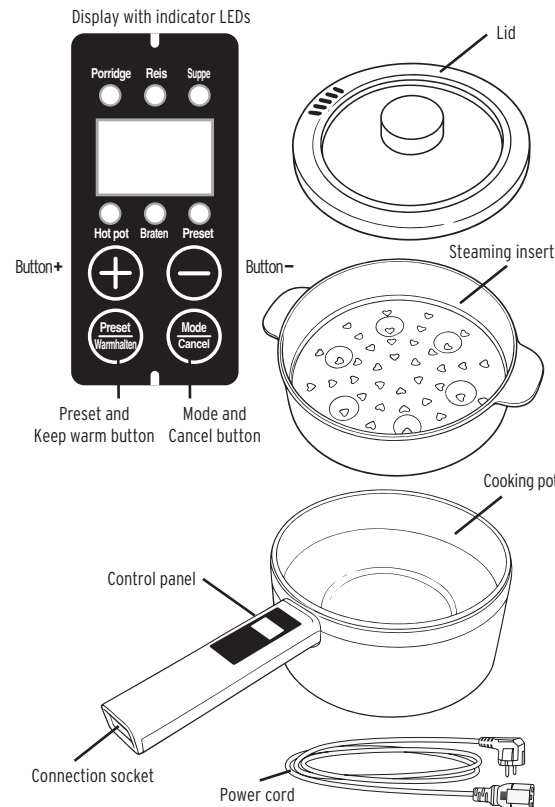


Multi cooker

en Instructions for use



At a glance (contents)



EG - DECLARATION OF CONFORMITY

The product described in this instruction manual complies with all relevant harmonized requirements of the EU. The complete declaration of conformity and instruction manual can be found online at www.jaxmotech.de/downloads.

About these instructions

This product is equipped with safety features. Nevertheless, read the safety warnings carefully and only use the product as described in these instructions to avoid accidental injury or damage. Keep these instructions for future reference. If you pass this product on to another person, remember to give them these instructions.

This symbol warns you of the danger of injury.

This symbol warns you of the danger of injury caused by electricity.

Symbols used in these instructions:

DANGER warns of potential severe injury and danger to life.

CAUTION warns of minor injury or damage.

NOTICE warns about the potential risk of material damage.

This indicates additional information.

Surface may become hot during use.

When the appliance is switched on, touch it only by the designated handles and controls.

Safety warnings

Intended use

This appliance is intended exclusively for the preparation of food for household use. Any other use, improper use, or use not in accordance with these instructions may result in damage to the appliance or personal injury.

The appliance is designed for processing quantities customary for household use and is not suitable for commercial use.

Danger to children and people with limited ability to operate appliances

- This appliance may be used by children aged 8 years and above and by persons with reduced physical, sensory or mental capabilities, or lack of experience and knowledge, if they have been given supervision or instruction concerning use of the appliance in a safe way and understand the hazards involved.
- Children must not be allowed to clean the appliance unless they are over 8 years of age and supervised while doing so.
- Keep the appliance and its mains cable out of the reach of children under 8 years of age when it is not in use.
- Children younger than 8 years shall be kept away from the appliance and its supply cord.
- Before carrying out any cleaning, disconnect the appliance from the mains supply, allow it to cool down, and observe the instructions in the section "Cleaning and storage".
- If the supply cord is damaged, it must be replaced by the manufacturer, its service agent, or similarly qualified persons in order to avoid a hazard.
- **Warning:** Use only the connector supplied with this appliance.

- Do not overfill the appliance to prevent the contents from spilling out during cooking.
- This appliance is intended to be used in household and similar applications only, but not in:
 - staff kitchen areas in shops, offices and other working environments;
 - farm houses;
 - by clients in hotels, motels and other residential-type environments;
 - bed and breakfast-type environments.
- Clean the appliance and all accessories after each use. Observe the instructions in the section "Cleaning and storage".
- Do not immerse the appliance in water.
- No liquid must be allowed to spill onto the appliance connector.
- **Warning!** Misuse and improper use are dangerous and can cause serious damage and injury.
- After use, the surface of the heating element retains residual heat.
- Ensure that the voltage indicated on the appliance corresponds to the mains voltage.
- This appliance is designed for household use and for quantities typical for household applications.
- Always place the appliance on a solid, heat-resistant and level surface that is not sensitive to splashes.
- The appliance is not intended for outdoor use.
- Regularly check the mains cord, the appliance and any extension cords for damage. Do not operate the appliance if it is damaged. Immediately disconnect it from the mains supply.
- Route the mains cord or any extension cord in such a way that it cannot be pulled or tripped over. Ensure that the mains cord does not hang down in easily accessible areas.
- Never carry or pull the appliance by the mains cord. Do not pull the mains cord over sharp edges. Do not clamp or kink the cord.
- When the appliance is not in use, switch it off and disconnect it from the mains supply.
- Never unplug the appliance by pulling on the mains cord or with wet hands.
- Disconnect the appliance from the mains supply in the event of malfunction, before cleaning or transporting it, and after use.
- The mains cord and the mains plug must not come into contact with water. If this occurs, immediately disconnect the appliance from the mains supply.
- Never place the appliance or the mains cord on or near an open flame.
- Do not touch the housing during operation or for some time afterwards, as it becomes very hot.
- **Caution!** Hot steam escapes from the steam outlet. Keep hands and face at a safe distance from the steam and open the lid with particular care. Never cover the steam outlet.
- Do not use the appliance without filling it with water beforehand, as this may cause damage.
- Do not leave the appliance unattended while it is in operation or connected to the mains supply.
- Do not use the appliance in explosive or flammable environments.

General use

DANGER to children

- Keep children away from packaging materials. Risk of suffocation!
- Surface may become hot during use. When the appliance is switched on, touch it only by the designated handles and controls.

Before first use

- ▷ Remove all packaging materials.
- ▷ Clean all parts as described in the section "Cleaning and storage".
- ▷ Allow all parts to dry thoroughly before assembling the appliance.

Preparation

- For cooking or preparing food:
 - Add the ingredients and the required amount of liquid, e.g. water, to the pot.
 - Connect the appliance to the mains supply to switch it on. All LEDs briefly light up and "--" is displayed. The appliance is now ready for use (Standby mode).

Operation

- Use the **Mode** button to select the desired function: **Porridge, Rice, Soup, Hot Pot, Fry, or Preset**. The selected function is indicated by the corresponding LED indicator.
- Press the + or - button to adjust the cooking time in **Porridge, Rice, or Soup** mode; the power level (P1 to P5) in **Hot Pot** mode; the power level (P1 to P3) in **Fry** mode. In **Hot Pot** and **Fry** modes, the selected power level is shown on the display. The cooking process starts 4 seconds after the setting is made.

Preset mode

In **Porridge, Rice, Soup, Hot pot, or Fry** mode, press the Preset button to set the desired time. The Preset indicator LED flashes.

The time can be set from 0.1 to 10 hours in 0.1-hour (6-minute) increments using the + and - buttons. The setting is saved automatically after 4 seconds, the display flashes, and the countdown starts.

Functions

Porridge

Default cooking time: 1 hour. The cooking time can be adjusted from 0.1 to 5 hours in 0.1-hour increments (6 minutes) using the + and - buttons.

The setting is saved automatically after 4 seconds. The flashing "dot" on the display indicates the cooking process. After cooking, the appliance switches to keep-warm mode for 8 hours and "bb" is shown on the display.

Rice

Default cooking time: 0.6 hours (36 minutes).

The cooking time can be adjusted from 0.1 to 5 hours in 0.1-hour increments (6 minutes) using the + and - buttons.

The setting is saved automatically after 4 seconds. The flashing "dot" on the display indicates the cooking process. After cooking, the appliance switches to keep-warm mode for 8 hours and "bb" is shown on the display.

Soup

Default cooking time: 2 hours. The cooking time can be adjusted from 0.1 to 5 hours in 0.1-hour increments (6 minutes) using the + and - buttons.

The setting is saved automatically after 4 seconds. The flashing "dot" on the display indicates the cooking process. After cooking, the appliance switches to keep-warm mode for 8 hours and "bb" is shown on the display.

Hot Pot

Power levels: 5 power levels (P1 to P5) can be selected using the + and - buttons.

Default cooking time: 2 hours. After the cooking time has elapsed, the appliance switches to standby mode and "--" is displayed.

Fry

Power levels: 3 power levels (P1 to P3) can be selected using the + or - buttons.

Default cooking time: 2 hours. After the cooking time has elapsed, the appliance switches to standby mode and "--" is displayed.

Keep Warm

In standby mode (the digital display shows "--" and all indicator LEDs are off), press the **Preset/Keep Warm** button. After approximately 4 seconds, "bb" appears on the display and keep-warm mode is activated.

The default setting is 8 hours. Preset and time settings are not available in this mode. After the keep-warm time has elapsed, the appliance switches to standby mode and "--" is displayed.

Cancel

Press the **Mode / Cancel** button during operation to stop the current process and return the appliance to standby mode.

Steam cooking

Insert the steaming insert and select the **Soup** program.

Adjust the cooking time using the + or - buttons in 0.1-hour increments (6 minutes) from 0.1 to 5 hours, depending on the type of food.

Cleaning and storage



DANGER - Risk of electric shock

- Switch off the appliance before cleaning.
- Do not immerse the appliance in water. Do not allow switches or electrical contacts to come into contact with water.

Notice - Risk of property damage

Do not use sharp chemicals, aggressive agents, or abrasive cleaning materials for cleaning.

1. Disconnect the multicooker from the mains supply and allow it to cool down.
2. Wipe the multicooker with a damp cloth and dry it thoroughly with a dry cloth.
3. Clean the lid and the steaming insert under hot running water using a sponge and mild dishwashing detergent. Dry all parts thoroughly before using them again.
4. Apply a small amount of white wine vinegar to a damp cloth and wipe the cooking bowl to remove any limescale deposits. Then clean the cooking bowl with a small amount of dishwashing detergent and wipe it with a damp cloth.

Storage

- ▷ Store the appliance out of the reach of children.

Technical specifications

| | |
|---------------------|-----------------------|
| Model | : MC 150 |
| Product number | : 734357/ 751070 (CH) |
| Mains voltage | : 220-240V~, 50-60Hz |
| Protection class | : I |
| Power | : 600W |
| Ambient temperature | : +10 to +40 °C |

| | |
|---------------------------------|--------|
| Capacity of the pot | : 1.6L |
| Capacity of the steaming insert | : 1.4L |

Power consumption in standby mode : < 0.8W

In the course of product improvement, we reserve the right to make technical and optical modifications to the product.

Disposal

This product and its packaging have been manufactured from valuable materials that can be recycled. Recycling reduces the amount of refuse and helps to preserve the environment. Dispose of the packaging at a recycling point that sorts materials by type. Make use of the local facilities provided for collecting paper, cardboard and lightweight packaging.



Appliances marked with this symbol must not be disposed of along with normal household waste! You are legally obliged to dispose of old appliances separately from household waste. Electronic appliances contain hazardous substances and, if stored or disposed of improperly, may cause harm to health and the environment. Information about collection points where old appliances can be disposed of free of charge is available from your local authorities.

Model: MC 150
Manufactured by: Jaxmotech GmbH,
Ostring 60,
66740 Saarlouis, Germany,
info@jaxmotech.de



MANUFACTURER'S WARRANTY

- We offer a 2-year warranty on your device, in addition to the standard commercial warranty, starting from the date of issue of the invoice or delivery note.
- Within this warranty period, upon presentation of the proof of purchase or delivery note, all manufacturing and/or material defects will be rectified free of charge by repairing and/or replacing the defective parts or (at our discretion) exchanging the device for an equivalent, flawless item.
- The manufacturer is not liable for personal injury or property damage caused by improper use or maintenance.
- Fragile parts, such as glass, plastic, or light bulbs, are excluded from the warranty.
- The warranty is void if the device has been opened and/or modified by you or an unauthorized third party.
- In the event of improper use, the safety and functionality of the device can no longer be guaranteed, and any warranty claim will be void.
- Any use other than that described in these operating instructions is prohibited and will result in the loss of warranty, guarantee, and liability.
- We reserve the right to make changes to the device, the operating instructions, or the packaging.

If you wish to make a complaint, we generally recommend that you first contact the retailer from whom you purchased the device.

Should a repair be necessary, you can reach our hotline at the following service number:

+49 (0)6831 505 9897

Technical Service

Sertronics GmbH
Ostring 60
66740 Saarlouis
Germany
E-Mail: service-ww@jaxmotech.de