

**Tchibo**  
**Multifunctional LED light**  
en Instructions for use

**Safety warnings** ⚠

Read the safety warnings carefully and only use the product as described in these instructions to avoid accidental injury or damage. Keep these instructions for future reference. If you give this product to another person, remember to also include these instructions.

**Intended use**

This product can be used as a reading light, night light or torch. The enclosed bracket is suitable for screw attachment to rough, textured surfaces (e.g. wallpaper or similar) and for sticking to smooth surfaces (e.g. tiles, mirrors or similar).

The product is suitable for use in dry, indoor areas.

The product is designed for private use and is not suitable for commercial purposes. It is only intended for decoration in private homes and is not suitable for lighting whole rooms.

**Danger to children**

- Children are not aware of the risks involved in handling electronic appliances incorrectly. Therefore, keep children away from the product.
- Keep all small parts and packaging materials out of the reach of children. They pose several risks, including the risk of suffocation and choking!

**Danger due to electricity when charging the battery**

- Do not charge the product outdoors or in damp rooms.
- Use only suitable mains adapters for charging the product (see "Technical specifications"). Do not use a faulty mains adapter or attempt to repair a faulty mains adapter.
- Only connect the appliance to a properly installed power socket with a mains voltage that complies with the technical specifications of the mains adapter used.
- The power socket used must be easily accessible so that you can quickly unplug the mains adapter whenever necessary. Route the charging cable in such a way that it is not a tripping hazard.
- Remove the mains adapter from the power socket if malfunctions occur during charging, during thunderstorms and before cleaning the product.

**Danger due to explosion/fire/burns**

- The rechargeable battery is firmly built into the product and cannot and must not be replaced or removed. There is a risk of explosion if the battery is replaced incorrectly. It should be replaced only with an identical rechargeable battery or an equivalent type of battery. If the rechargeable battery is defective, contact a specialist workshop.
- **Warning!** Lithium batteries can explode ...
  - ... if they are exposed to extreme heat, such as sunlight, fire, etc., or extremely low air pressure during use, storage or transport. Use the product under moderate climatic conditions only.
  - ... if they are taken apart, thrown into fire or short-circuited. Do not place any naked flames such as burning candles near the product. The product must be kept away from candles and other naked flames at all times to prevent the spread of fire.
- Do not modify and/or deform/heat/dismantle rechargeable batteries. Do not immerse them in water either.

**Warning - danger due to improper use**

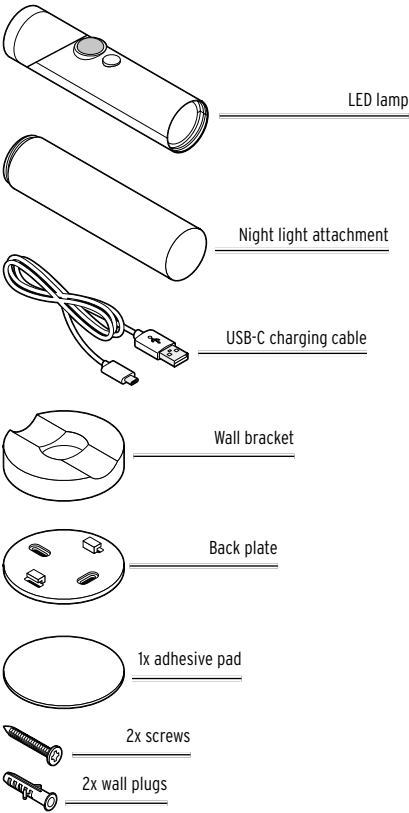
- The LEDs are very bright. Do not look directly into the light when used as a torch, especially the front beam, to avoid eye damage.
- Do not make any modifications to the product. Have repairs to the product carried out only by a specialist workshop. Improper repairs can result in considerable danger to the user.
- Do not use the product if it shows any visible signs of damage or has fallen down.

**Material damage**

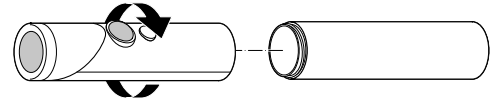
- Do not use the product outdoors or in damp rooms.
- Do not immerse the product in water or any other liquids. Protect the appliance from impacts, falls, dust, moisture, direct sunlight and extreme temperatures.

- Do not use caustic or abrasive agents or hard brushes, etc. for cleaning.
- The built-in LEDs cannot be replaced, otherwise the product would be destroyed.
- We have included wall mounting materials (screws and wall plugs). The mounting materials provided are suitable for standard solid walls. Enquire about which mounting materials are suitable for your wall before mounting the product. Make sure there are no pipes or cables running through where you intend to drill the holes!
- Keep cards with magnetic strips, such as credit cards, debit cards, etc. away from the wall bracket. The magnetic strips could be damaged. Also keep magnetic storage media and all devices affected by magnetism or which could suffer functional impairment away from the wall bracket.

**At a glance (contents)**



**Use**

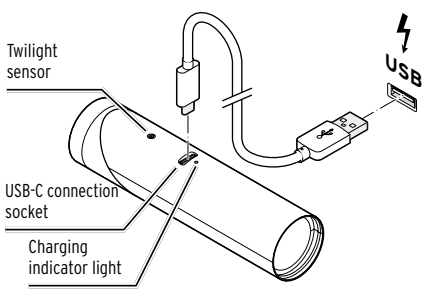


▷ Attach the light to the night light unit as shown.

**Charging the battery**

The rechargeable battery comes in a half-charged state. This is to prevent it from becoming damaged. Charge the battery fully by connecting a USB mains adapter (not included) to the power supply before using the product for the first time.

- You cannot use the light while the battery is charging. As soon as the charging cable is plugged into the connection socket, the light switches off automatically.



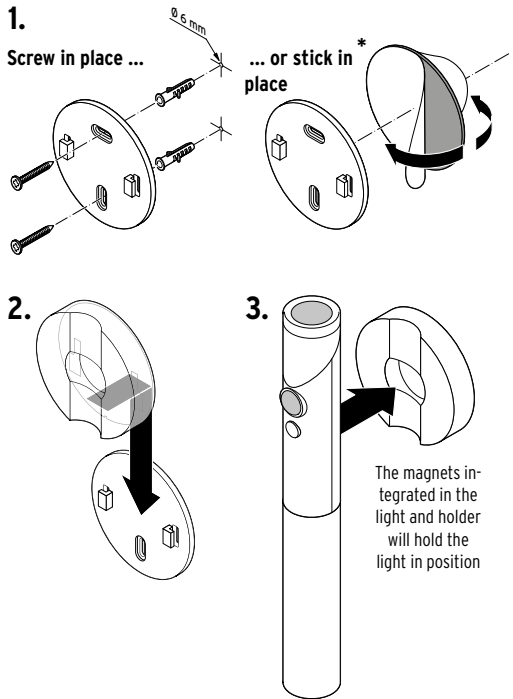
▷ Connect the supplied USB-C charging cable to the USB-C socket on the side of the light and to a suitable USB mains adapter (see "Technical specifications"). Insert the mains adapter into a power socket. The charging indicator light lights up red while the battery is charging. The usual charging time for a flat battery is approx. 2.5 hours. Once the charging indicator light lights up green, the battery is fully charged. The appliance is ready for use.

**Information on rechargeable batteries**

- You cannot use the product while the battery is charging.
- To preserve the rechargeable battery's full capacity for as long as possible, you should fully recharge the battery every 2 to 3 months, even if you do not use the product.
- Charge the battery in an environment between +10 and +40 °C.
- The battery will best hold its charge at room temperature. The lower the ambient temperature, the shorter the operating time.
- To save power, unplug the USB mains adapter from the power socket after charging.

**Attaching the light to the wall**

You can use the wall bracket and back plate to stick or screw the light to a suitable wall.



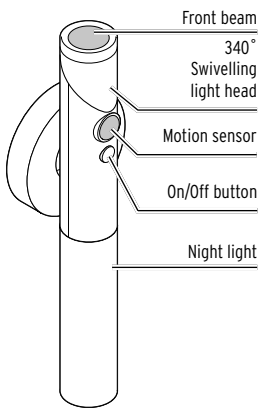
**Observe the following:**

- Do not position the light directly above a sink, over a stove or in the vicinity of any other source of heat or moisture.
- Do not attach the light to round, curved or tubular objects. It could fall down and cause injury, or become damaged.

**\* Important instructions for attaching the wall bracket with adhesive pads:**

- The tesa® adhesive pad will adhere to all smooth, flat surfaces, e.g. mirrors or glass surfaces, tiles, etc. Do not attach the wall bracket over joints and other uneven surfaces. The adhesive pad will not adhere to textured surfaces.
- The tesa® adhesive pad is intended for permanent fixture. Avoid attaching the wall bracket to delicate surfaces if you want to remove it again later.
- 1. The surface must be free from dust, grease, silicone and limescale. Clean and degrease the surface **with pure alcohol (isopropyl) or methylated spirit**. Bathroom or all-purpose cleaners are not suitable.
- 2. Gently pre-dry the cleaned area and then leave it to dry completely.
- 3. Place the wall bracket in the desired position and press it there firmly for approx. 10 seconds. After approx. 30 minutes, press it again for approx. 10 seconds. After 24 hours, the wall bracket is ready for use.
- You will get the best hold at temperatures between 23 °C and 40 °C.

**Use**

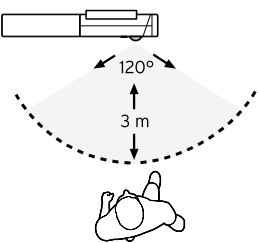


- ▷ Press the On/Off button ...
  - ... **1x** to switch on the **front beam with the timer**.
  - ... **2x** to switch on the **night light with the timer**.

- The LED in the front beam or in the night light, as appropriate, flashes twice to confirm. The respective LED switches off after two hours.

- ... **3x** to activate the **front beam with the darkness-sensitive motion sensor**.

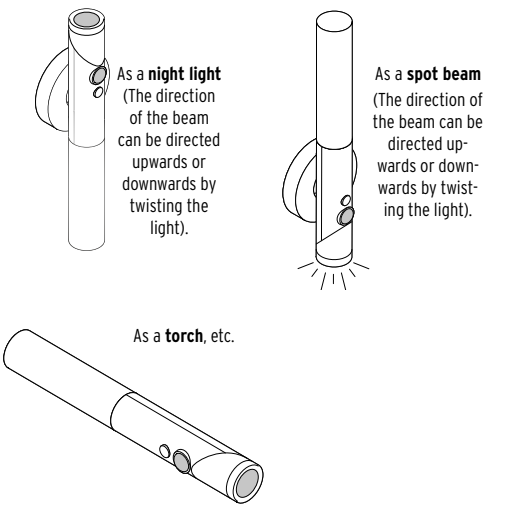
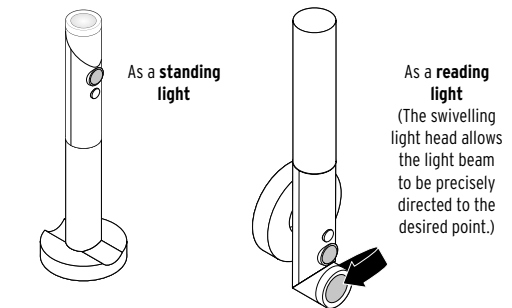
- ... **4x** to activate the **night light with the darkness-sensitive motion sensor**.



- The sensor detects motion within a radius of up to three metres within a detection angle of 120° and then switches on the LED if it is dark. If no further motion is detected in the monitoring area, the LED switches off again after 30 seconds.

- ... **5x** to switch the light off again.

**Examples of possible lighting options**



**Cleaning**

▷ If necessary, wipe the product with a soft, slightly damp cloth.

**Disposal**

The product, its packaging and the built-in rechargeable battery have been manufactured from valuable materials that can be recycled. Recycling reduces the amount of refuse and preserves the environment. Dispose of the **packaging** at a recycling point that sorts materials by type. Make use of the local facilities provided for collecting paper, cardboard and lightweight packaging.

**Appliances, single-use batteries and rechargeable batteries** marked with this symbol must not be disposed of along with household waste!

You are legally obliged to dispose of old appliances separately from household waste. Electronic appliances contain hazardous substances and, if stored or disposed of improperly, may cause harm to health and the environment. Information about collection points where old appliances can be disposed of free of charge is available from your local authorities. Flat single-use and rechargeable batteries must be handed in at a local authority collection point or returned to a battery retailer. Tape off the contacts of lithium single-use/rechargeable batteries prior to disposal. **Warning!** This appliance contains a rechargeable battery that, for safety reasons, is firmly built into the appliance and cannot be removed without destroying the casing. Improper disassembly leads to safety hazards. For this reason, take the appliance intact to a collection point where the appliance and battery will be disposed of properly.

**Technical specifications**

Product number:	728 379
Rechargeable battery:	1x lithium-polymer battery, 600 mAh/3.7 V Watt-hour rating: 2.22 Wh (tested as per UN 38.3)
Input:	DC 5 V/0,5 A
Protection class:	III ⚡
Charging time:	approx. 2.5 hours
Operating time:	
Front beam:	approx. 8 hours
Night light:	approx. 40 hours
Bulb:	2 LEDs (front beam 0.5 W / night light 0.06 W)
Ambient temperature:	+10 to +40 °C
Made exclusively for:	Tchibo GmbH, Überseering 18, 22297 Hamburg, Germany

**Information about the inserted battery / Kullanılan şarjlı pil ile ilgili bilgiler:**  
**Manufacturer / Üretici:** SHENZHEN ZONYOU POWER CO., LTD

**Address / Adres:** 218, building1, Lixin Lake Creative Park, No.1, Furui Road, Qiaotou community, Fuhai Street, Bao'an district, Shenzhen  
**Email / E-posta:** 903504735@qq.com **Manufacturing date / Üretim tarihi:** 2025-07 **Made in / Üretim yeri:** China / Çin