

**en** Original instructions for use and warranty

Tchibo GmbH D-22290 Hamburg · 109975HB · 2023-09 - V1

## Contents

2	Technical specifications	13	Cleaning - Removing coffee deposits in the machine using Qbo cleaning capsules
2	Disposal		
3	About these instructions	14	Descaling
3	Safety warnings	16	Machine maintenance
5	At a glance (features)	17	Problems / solutions
5	Control panel – Button functions	18	Declaration of Conformity
6	Removing protective films and packaging materials	19	Warranty
6	Initial operation – prior to first use	19	Service and repair
		19	Qbo service team
		19	Product number
7	Rinsing the machine		
8	The finest aroma - the finest flavour		
8	Using large / small cups or glasses		
9	Switching the machine on/off		
9	Standby mode		
10	Filling the water tank		
10	Making a beverage		
11	After use		
12	Adjusting the strength of the beverage (beverage quantity)		
12	Restoring the factory settings		

## Technical specifications

Type/model number:	600 144	Volume of used capsule container:	6 capsules
Mains voltage:	220-240 V / 50 Hz	Default beverage quantity settings:	
Power:	1250 watts	Caffè Grande approx.	180 ml
Power consumption in connected standby mode:	<2 watts	Caffè approx.	125 ml
Power consumption when switched off:	<0.5 W	Espresso approx.	40 ml
Protection class:	I	Made exclusively for:	
Pump pressure:	19 bar	Tchibo GmbH, Überseering 18,	
Sound pressure level:	<70dB(A)	22297 Hamburg, Germany	
Volume of water tank:	900 ml	In the course of product improvement, we reserve the right to make technical and optical modifications to the machine.	



## Disposal

The product and its packaging have been manufactured from valuable materials that can be recycled. Recycling reduces the amount of refuse and helps to preserve the environment.



**Appliances** marked with this symbol must not be disposed of along with household waste! You are legally obliged to dispose of old appliances separately from household waste. Electronic appliances contain hazardous substances and, if stored or disposed of improperly, can cause harm to health and the environment. Information about collection points where old appliances can be disposed of free of charge is available from your local authorities.

## About these instructions

This product is equipped with safety features. Nevertheless, read the safety warnings carefully and only use the product as described in these instructions to avoid accidental injury or damage.

Keep these instructions for future reference.

If you give this product to another person, remember to also include these instructions.

Symbols in these instructions:



This symbol warns you of the danger of injury.



This symbol warns you of the danger of injury caused by electricity.

The term **DANGER** warns of possible severe injuries and danger to life.

The term **WARNING** warns of injury and severe material damage.

The term **CAUTION** warns of slight injuries or damage.



This symbol indicates additional information.

---

## Safety warnings



### Intended use and location

The machine is designed for brewing coffee and espresso using Qbo-branded capsules.

The machine has been designed for use in households or for similar applications such as

- in shops, offices or similar work spaces,
- agricultural buildings,
- by customers in hotels, motels, bed and breakfast establishments or other places offering accommodation.

If the machine is used for commercial purposes, it must be overseen and cleaned by trained personnel. Maintenance that goes beyond cleaning is not necessary for this machine.

Do not use the machine outdoors. Set up the machine in a dry indoor room. Avoid high humidity and high levels of dust.

### **DANGER to children and to people with limited ability to operate appliances**

- Children must not be allowed to play with the machine. Keep the machine and mains cable away from animals and children under the age of 8.
- This appliance may be used by children aged 8 and over and by people with reduced physical, sensory or mental capabilities, or who lack experience and/or knowledge, provided they are supervised or have been trained in the safe use of the machine and understand the potential dangers.
- Children must not be allowed to clean the appliance unless they are over 8 years of age and supervised while doing so. This appliance is maintenance-free.
- Set up the appliance out of the reach of children.
- Thanks to its integrated magnets, the residual water tray is easy to insert into the appliance. If one of the integrated magnets comes loose, keep it away from children. In the case that magnets are swallowed or inhaled, seek medical advice immediately. Magnets connecting inside the body can lead to serious injuries.
- Keep the packaging materials out of the reach of children. They pose many risks, including the risk of suffocation!

### **DANGER due to electricity**

- Never immerse the coffee machine, mains plug or mains cable in water, as there is otherwise a danger of electric shock. Do not clean the machine using pressure washers and do not position it anywhere it could be cleaned with a pressure washer. Never touch the mains plug with damp hands.
- Never leave the machine unattended when switched on.
- Only connect the machine to a properly installed, grounded wall socket. The mains voltage must comply with the requirements stated in the machine's technical specifications.

- The mains cable must not be kinked or squeezed. Keep it away from sharp edges and sources of heat.
- Do not use the machine if the machine, mains cable or mains plug is damaged or if the machine has been dropped.
- Never place any drinks or other objects on top of the machine.
- Remove the mains plug from the wall socket...
  - ... if a fault occurs,
  - ... if the machine will not be used for a longer period of time,
  - ... before removing and cleaning parts of the machine,
  - ... before wiping the machine's casing.
 Always pull on the plug, not the mains cable.
- Do not make any modifications to the machine, mains cable or other parts. Electrical appliances must only be repaired by qualified electricians, as improper repairs can cause considerable damage. Only have repairs carried out by a specialist workshop or as arranged by our customer care service.
- If the mains cable is damaged, it must be replaced by the manufacturer, its customer service or a similarly qualified person in order to avoid danger.

#### **WARNING - risk of scalds/burns/fire**

- Do not cover the machine while it is in use (e.g. with newspapers, blankets, clothes, etc.).
- Position the machine in such a way that that it is free-standing for use; never place it directly against a wall or in a corner, in a cupboard, against curtains, etc .
- Do not touch the beverage spout during or immediately after use. Avoid coming into contact with the beverage coming out of the spout.
- Do not open the lever and do not remove the used capsule container during use.

#### **CAUTION - risk of injuries or material damage**

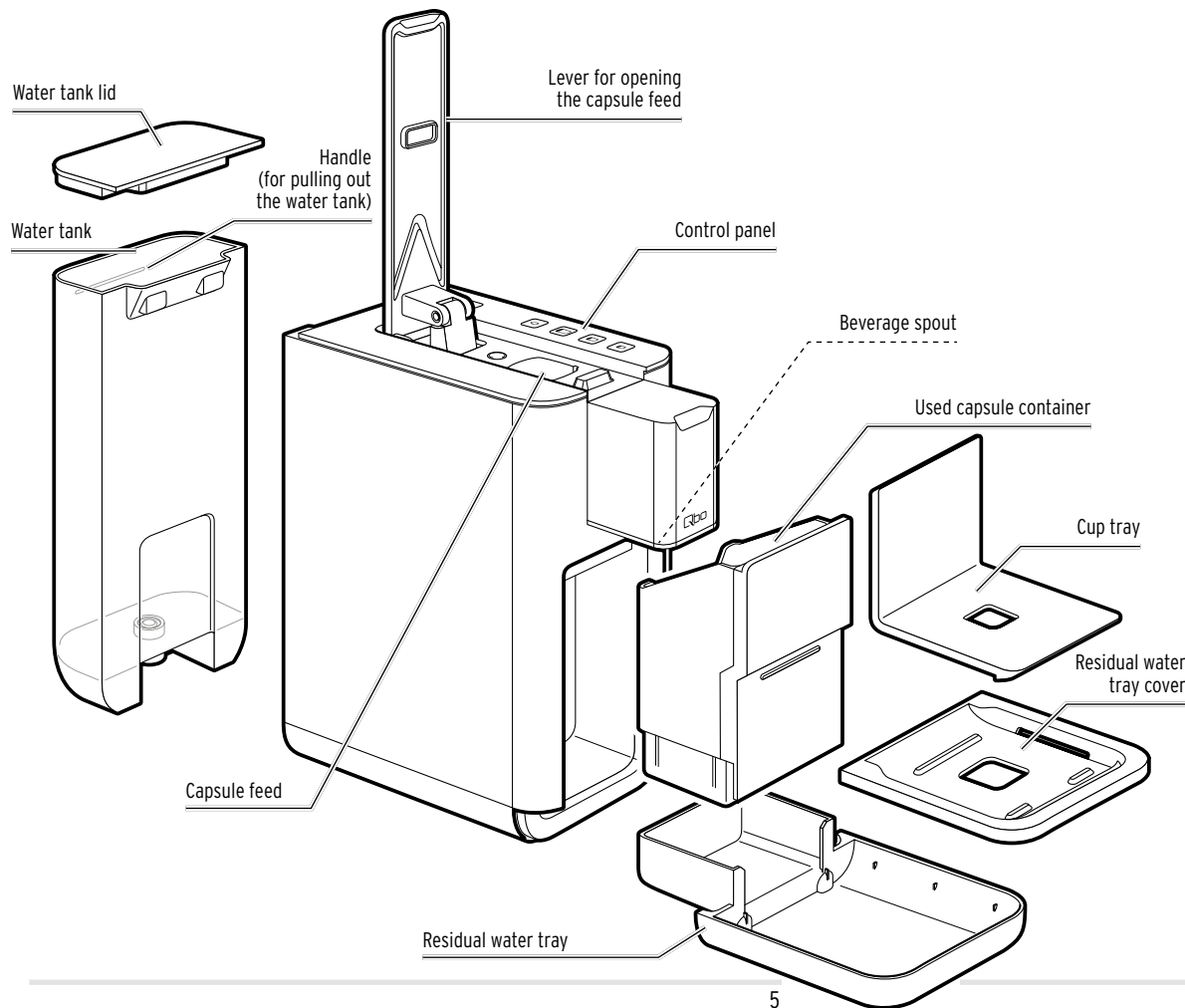
- **Use only original Qbo capsules.** Do not use capsules from other manufacturers or damaged or deformed capsules, and never fill capsules or the machine with ground coffee or instant coffee, as this would damage the machine. In these cases, any necessary repairs would not be covered by the warranty.
- Only use the machine with the residual water tray inserted and the residual water tray cover and cup tray in place.

- Only pour fresh, cold tap water or other drinking water into the water tank. Do not use carbonated mineral water or any other liquid.
- Descale the machine as soon as it indicates that this is necessary.
- Do not lift the machine up by the lever. To move the machine, hold it by the sides on the outer casing.
- Place the machine on a solid, level surface that is well illuminated and resistant to moisture and heat.
- To ensure that the casing does not melt, do not place the machine on a hob or immediately next to a hot oven, radiator or anything similar.
- Route the mains cable in such a way that it is not a tripping hazard. Do not let the mains cable hang down from the surface on which the machine is standing so as to ensure that the machine cannot be pulled down by it.
- Keep cards with magnetic strips, such as credit or debit cards, away from the residual water tray and its built-in magnets. The cards could otherwise become damaged. You should also keep magnetic memory storage media and all devices that are affected by magnetism or may sustain functional impairment away from the machine.
- The machine is equipped with non-slip feet. Work surfaces often have varnished or plastic finishes and are treated with a variety of care products. Some of these may contain substances that react adversely to the non-slip feet and soften them. If necessary, place a non-slip mat under the machine.
- The machine must not be exposed to temperatures below 4 °C. Water that remains in the heating system could freeze and cause damage.
- Sound pressure level <70dB(A).



We check all our machines carefully prior to delivery and test them with coffee capsules and water. For this reason, despite thorough cleaning, you may still find minimal coffee or water residue in your machine. This is not a sign of poor quality - the machine is in perfect working order.

## At a glance (features)



## Control panel – Button functions



### On/Off button



### Cleaning button

- Flashes white (water tank empty)
- Lights up blue for approx. 3 seconds (machine requires cleaning)
- Lights up continuously in red (machine requires descaling)



### Beverage button Caffè Grande



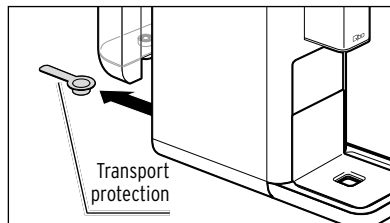
### Beverage button Caffè



### Beverage button Espresso

## Removing protective films and packaging materials

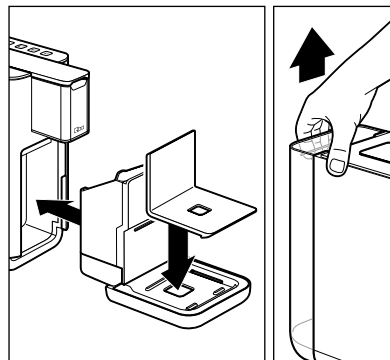
1. Take the machine out of the packaging.
2. Pull all protective films off the machine and remove all packaging materials.
3. Remove the transport protection material underneath the water tank.



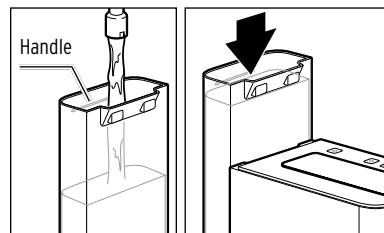
- i** The packaging materials protect the machine during transport. Keep the packaging in case you need to transport the machine or return it in case of damage.

## Initial operation - prior to first use

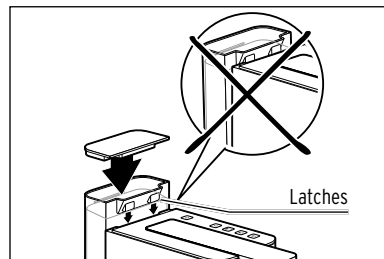
- i** Do not insert any capsules into the machine during initial operation.



1. Place the cup tray onto the residual water tray cover in the direction shown.
2. Push the residual water tray into the machine as far as it will go. The residual water tray is held in place by magnets.
3. Pull the water tank straight up and out of the machine.
4. Clean the water tank as described in the section "Machine maintenance".

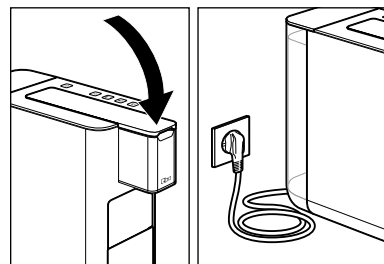


5. Then fill the water tank with fresh, cold tap water or drinking water up to the handle.
6. Reinsert the water tank into the machine from above.

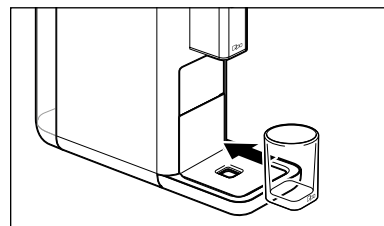


The two hook-like latches on the water tank must catch on the back of the casing and click into place. The water tank might otherwise be incorrectly inserted or inserted at an angle.

7. Press the water tank all the way down until the top is flush with the casing.




8. The lever must be in the down position. Fold it down if necessary.
9. Plug the mains plug into an easily accessible wall socket.



10. Place an empty cup underneath the beverage spout.



11. Press any button to switch on the machine.  
The cleaning button  will flash.



12. Press the cleaning button.

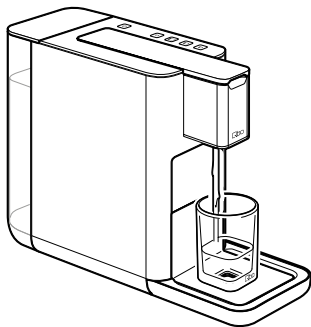


### WARNING




- risk of scalds/burns


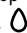



Hot water or hot coffee flowing from the beverage spout can cause scalding.

- Do not touch the beverage spout during or immediately after use.
- Avoid coming into contact with the beverage coming out of the spout.



The pump will start to operate. As soon as the pipes are filled with water, the pump will stop automatically. A small quantity of water will run into the cup placed underneath. You will hear two beeps.

The machine will then heat up to its operating temperature. The three beverage buttons    will flash.

As soon as the machine has heated up, a beep will sound and all of the buttons      will light up continuously.

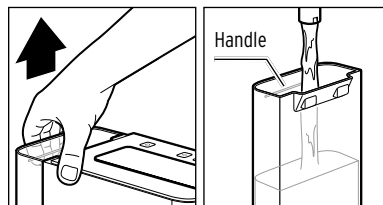
13. Pour away the water that is in the cup and rinse the machine twice as described in the section "Rinsing the machine". The machine is then ready for use.

## Rinsing the machine

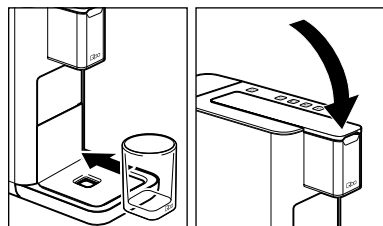
After switching the machine on for the first time, or if you have not used the machine for longer than 2 days, rinse the machine by allowing 2 cups of water (**without a capsule**) to flow through it.

Requirements:

- The mains plug is connected to the mains.
- The machine is switched on.
- There is no capsule in the capsule feed.



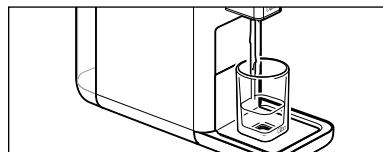
1. Pull the water tank straight up and out of the machine and then fill it with fresh, cold tap or drinking water up to the handle.



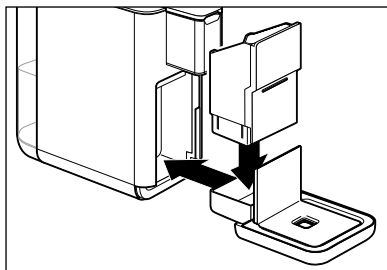
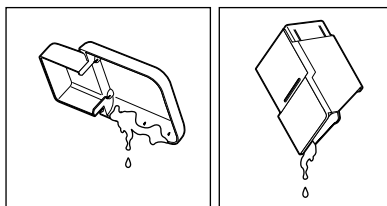
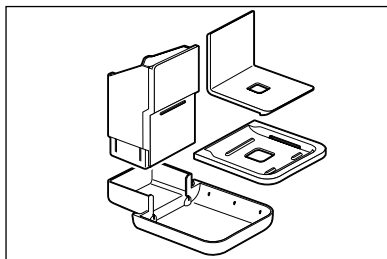
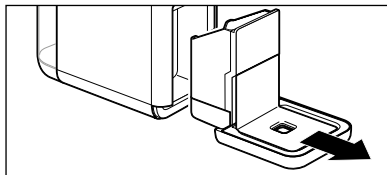
2. Reinsert the water tank into the machine from above.
3. Place an empty cup underneath the beverage spout.
4. Fold down the lever if necessary.



5. Press the middle beverage button (Caffè).



The pump will flush water through the pipes, which will then run into the cup placed underneath. You will hear a beep at the end of the rinsing process.



6. Pour the water in the cup away.
7. Repeat steps 4 to 6.
8. Finally, empty the residual water tray and, if necessary, the used capsule container:

▷ Pull out the residual water tray to remove it.

▷ Remove the used capsule container, the cup tray and the residual water tray cover.

▷ Empty the residual water tray and, if necessary, the used capsule container.

9. Reinsert all parts into the machine.

## The finest aroma – the finest flavour

### One capsule per cup

Each capsule is portioned for one cup of Caffè, Caffè Grande or espresso.

### Full-bodied aroma

Only insert a capsule when you intend to use the machine. The capsule is pierced as it is inserted. If it is not used immediately, the aroma will fade.

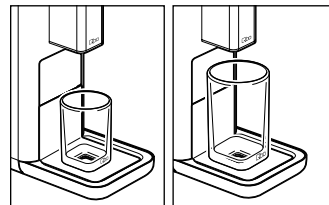
### Preheating the cup

Fill the cup with hot water, then pour that water away shortly before using the cup. This will ensure your beverage tastes its best.

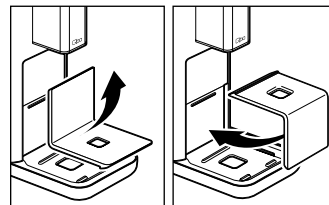
### Strength of the beverage

Adjust the strength of the beverage to suit your personal taste by adjusting the quantity of water. This is very easy to do, and is described in the section “Adjusting the strength of the beverage (beverage quantity)”.

## Using large / small cups or glasses



**For large cups, tall glasses and coffee mugs,** position the cup tray as shown in the illustration.



**For small cups,** turn the cup tray around as shown in the illustration.



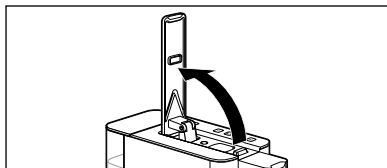
## Switching the machine on/off

### Switching the machine on

- To switch the machine on...  
... press any button or



- ... lift the lever all the way up.

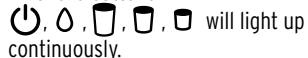


The three beverage buttons



As soon as the machine has heated up, it will emit a beep.

All of the buttons



### Switching the machine off



- To switch the machine off, press the On/Off button.

## Standby mode

After use, always put the machine into standby mode using the On/Off button. The machine will then only use minimal power. If no buttons have been pressed for around 9 minutes, the machine will switch automatically into standby mode. This is both a safety function and an energy-saving function. You can choose between four time spans after which the machine will switch off automatically: 2 minutes, 9 minutes, 30 minutes or 120 minutes.

You can set the different switch-off times as follows:



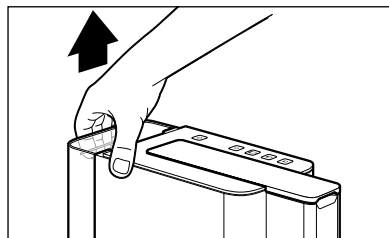
1. With the machine switched on, press and hold the **On/Off** button for approx. 5 seconds. You will hear a beep.

One of the 4 buttons will now be continuously illuminated and the other 3 buttons will not. You can read which switch-off time is currently programmed using the continuously illuminated button.

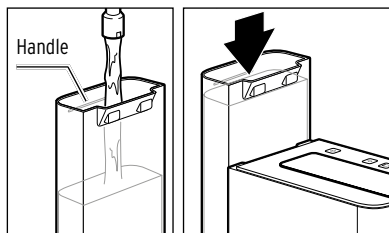
Machine off after 2 minutes (Espresso button)				
Machine off after 9 minutes (Caffè button)				
Machine off after 30 minutes (Caffè Grande button)				
Machine off after 120 minutes (Cleaning button)				

2. Press the button with the desired switch-off time (you will hear 2 beeps) or wait approx. 30 seconds to retain the existing switch-off time.

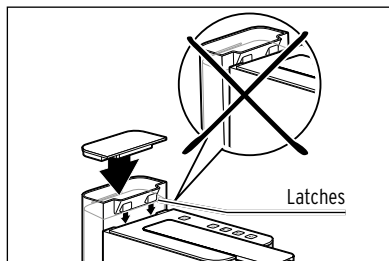
## Filling the water tank



1. Pull the water tank straight up and out of the machine.



2. Then fill the water tank with fresh, cold tap water or drinking water up to the handle.
3. Reinsert the water tank into the machine from above.



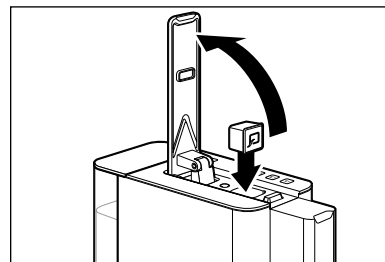
The two hook-like latches in the water tank must catch on the back of the casing and click into place. The water tank might otherwise be inserted incorrectly or at a tilt angle.

4. Press the water tank all the way down until the top is flush with the casing.

## Making a beverage

Requirements:

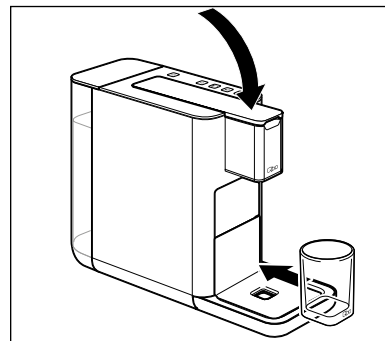
- The machine is switched on and ready for use.
- The water tank has been filled with water.



1. Lift the lever all the way up.
2. Insert a Qbo capsule into the machine. The "Q" on the capsule must be pointing forwards.



The capsule must be intact: Do not pierce the capsule, do not remove the capsule lid, and do not insert a misshapen capsule!



3. Fold the lever down completely. This pierces the base and lid of the inserted capsule.
4. Place an empty cup or mug underneath the beverage spout.



**WARNING** - risk of scalds/burns

Hot water or hot coffee flowing from the beverage spout can cause scalding.

- Do not touch the beverage spout during or immediately after use.
- Avoid coming into contact with the beverage coming out of the spout.



**Caffè Grande**



**Caffè**



**Espresso**

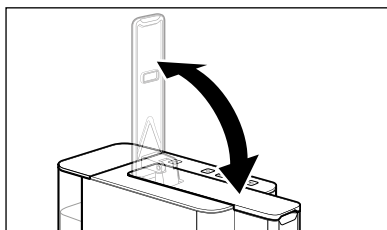
5. Press the beverage button that corresponds to the capsule you have inserted.

The brewing process will start and stop automatically. You will hear a beep at the end of the brewing process.

▷ If you would like to stop the brewing process prematurely, press the same beverage button again during the brewing process.



Making Espresso involves pre-brewing a small amount of coffee. This allows the coffee's flavours to fully develop. You will notice this process by the brief pause at the beginning of the brewing process. Caffè and Caffè Grande are made without pre-brewing.



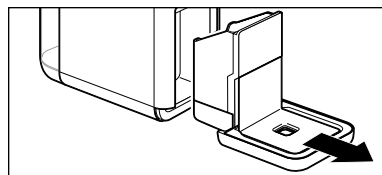
6. Lift the lever up as far as it will go. This will cause the used capsule to drop into the used capsule container.

Default beverage quantities upon purchasing the machine:

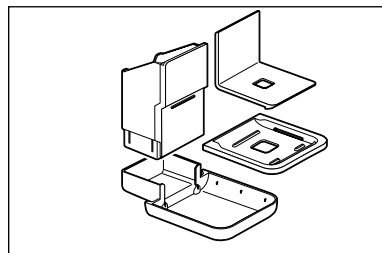
**Espresso** approx. 40 ml | **Caffè** approx. 125 ml | **Caffè Grande** approx. 180 ml

## After use

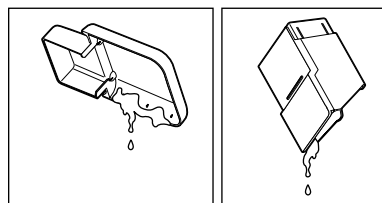
▷ Regularly empty the residual water tray and the used capsule container:



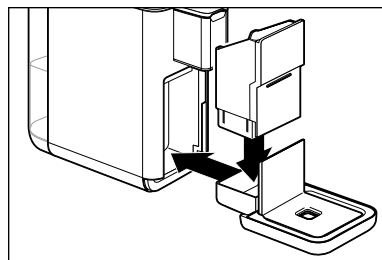
1. Pull out the residual water tray to remove it.



2. Remove the used capsule container, the cup tray and the residual water tray cover.



3. Empty the residual water container and, if necessary, the used capsule container. The used capsule container can hold approx. 6 capsules.



4. Reinsert all parts into the machine.

## Adjusting the strength of the beverage (beverage quantity)

Adjust the strength of the beverage to suit your personal taste by adjusting the beverage quantity. You can do this for one single brewing procedure or save the setting.

Requirements:

- The machine is switched on and ready for use.
- There is a cup or glass under the beverage spout.

### Adjusting the strength for the current brewing procedure (without saving the setting)


- ▷ If the beverage is too weak for your taste, you can stop the water flow prematurely by pressing the flashing beverage button.
- ▷ If the beverage is too strong for your taste, simply start the brewing process again without inserting a new capsule. Press the flashing button once again as soon as sufficient water has run through.

Default beverage quantity settings upon purchasing the machine:

**Espresso** approx. 40 ml | **Caffè** approx. 125 ml | **Caffè Grande** approx. 180 ml

The beverage quantity can be set to between approx. 25 and 280 ml.

### Setting the strength of the beverage permanently (saving the setting)

- ▷ You can change the factory settings for the water quantity permanently. This enables you to make your favourite coffee every time at exactly the strength you prefer. You can customise the setting for each beverage button: one setting each for Espresso, Caffè and Caffè Grande.
- ▷ Press and hold the corresponding beverage button until the desired beverage quantity has been dispensed into the cup.
  -  When you press the button down, the machine will emit a beep (if making Espresso, the machine will also pause briefly for the pre-brewing process) before then dispensing the beverage.
- ▷ When you release the button, the quantity is saved. You will then hear two beeps in confirmation.



If the machine emits five beeps, this means that the new beverage quantity could not be saved. If this occurs, repeat the procedure as described in the foregoing.

- ▷ If the settings are not to your taste, simply repeat the procedure to change them again.

## Restoring the factory settings




You can restore the original settings for the water quantity.

Requirements:

The machine is switched on and ready for use.



1. Press and hold the three beverage buttons simultaneously for approx. 5 seconds.

The machine will emit two beeps in confirmation and the three beverage buttons  ,  ,  will flash.

2. Release the beverage buttons.

The factory settings for the water quantity have been restored. The machine will then be restarted. Initial operation will begin. Proceed as described in the chapter “Initial operation- prior to first use”.

## Cleaning - Removing coffee deposits in the machine using Qbo cleaning capsules



**WARNING** - danger to health due to cleaning solution

Do not interrupt the cleaning process; cleaning solution residue could otherwise remain in the machine. If the cleaning process does get interrupted, the machine will need to be rinsed thoroughly before you use it again in order to avoid damage to health. The machine will not be able to brew coffee again until the process is completed.



In the course of normal use, coffee residue will gather in the brewing chamber and on the beverage spout. The Qbo cleaning capsules will remove such residue, thus ensuring unadulterated, consistently good coffee. If you consume an average amount of coffee, you will need to clean the machine around once a month.



**Cleaning button**

If the cleaning button lights up **blue** for approx. 3 seconds after the machine is switched on, the machine requires cleaning.

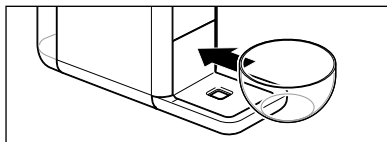
**The cleaning process takes approx. 5 minutes.**



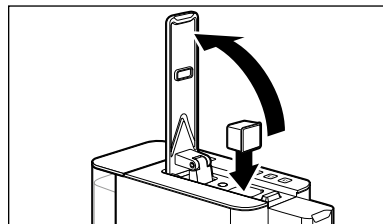
If you do not clean the machine, then, for as long as the machine is not cleaned, the cleaning button will light up in blue for a few seconds every time you switch the machine on. You can still carry out the cleaning process in the meantime. To do so, proceed as described.

Requirements:

- The machine is switched on and ready for use.
- The water tank has been filled with water up to the handle.




1. Place an empty container with a capacity of at least 600 ml under the beverage spout.



2. Lift the lever all the way up.
3. Insert a Qbo cleaning capsule into the machine.
4. Push the lever back down completely. The capsule will then be pierced in the base and the lid.



5. Press the cleaning button once. The cleaning button  will light up blue.

6. Press and hold the cleaning button for approx. 5 seconds until the cleaning process starts.

The cleaning button  will flash.

The machine will then pump approx. 600 ml of cleaning solution through the pipes at several short intervals.



Keep an eye on the container and empty it before it overflows.

7. When the process has come to an end, the machine will automatically switch into standby mode. The cleaning process has been completed.

## Descaling



Cleaning button

If the cleaning button stays lit up in **red**, the machine needs to be descaled. Do this within the next couple of days. Do not wait any longer, otherwise so much limescale may collect that a descaling agent will no longer have any effect.

**Descaling takes approx. 30 minutes.**

**CAUTION** – damage to the machine due to limescale deposits

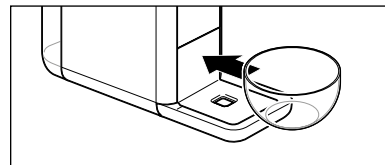
- **Descale the machine as soon as it indicates that this is necessary (after approx. 50 litres).** This increases its service life and saves energy.
- Do not use any descaling agents made on the basis of formic acid.
- Use a standard, liquid, descaling agent suitable for coffee and espresso machines. Other agents may damage materials in the machine and/or have no effect.



- The descaling process can not be stopped. If the descaling process is interrupted (e.g. due to a powercut), it must be completed immediately once the machine is switched on again. The machine will not be able to brew coffee again until the process is completed.
- If you do not descale the machine, then, until you do perform the descaling procedure, the cleaning button will light up in red whenever you switch the machine on.
- If you wish to perform an interim descaling (before the cleaning button lights up in red), press the cleaning button several times until the button lights up in red, then proceed as described.

Requirements:

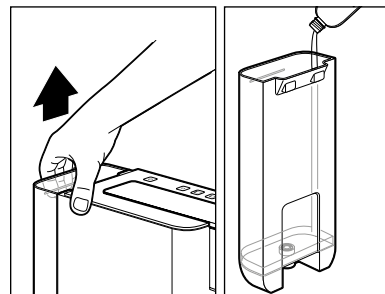
The machine is switched on and ready for use.



1. Place a container with a capacity of at least 600 ml under the beverage spout.

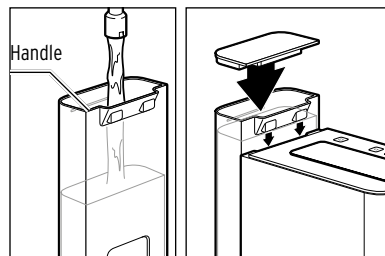


You will need to empty the container underneath several times during the descaling process.

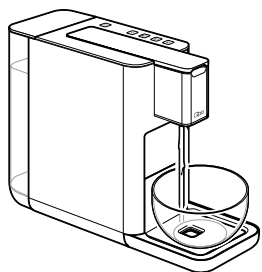


2. Remove the water tank from the machine.
3. Pour a standard, liquid descaling agent suitable for coffee and espresso machines into the empty water tank.



**Tip:** We recommend using **durgol®** swiss espresso® descaler, which is available from any Tchibo branch and from specialist retailers.




4. Pour in water up to the handle.
5. Reinsert the water tank into the machine.



6. Press and hold the cleaning button for approx. 5 seconds to start the descaling process.

The cleaning button  will flash.  
The bottom beverage button  will glow continuously.

7. Press the illuminated bottom beverage button (Espresso).

The descaling process will begin.  
The bottom beverage button  will extinguish.


The cleaning button  will flash.

The machine will pump all the descaling solution through the pipes at 2.5-minute intervals.

**The procedure takes approx. 25 minutes.**

**When the water tank is empty, the machine will stop for approx. 2.5 minutes.**

After 2.5 minutes the machine will emit a beep.

The middle beverage button  will light up.

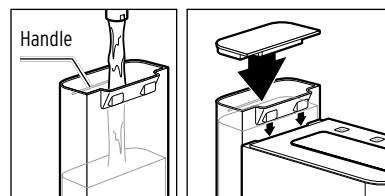
The cleaning button  will flash.

8. Remove the water tank from the machine.

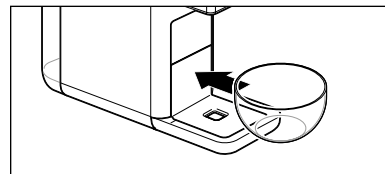
9. Wash the water tank with water and washing-up liquid. Dry it well.

The machine will now move on to the rinsing process in order to rinse out any descaling residue from the pipes.

## Rinsing process



10. Fill the water tank up to the handle mark with cold tap water and reinsert it into the machine





11. Place an empty container with a capacity of at least 600 ml under the beverage spout.




12. Press the middle beverage button (Caffè).

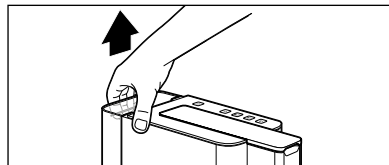
The rinsing phase will begin.

The middle beverage button  will extinguish. The cleaning button  will flash.

**The procedure takes approx. 2 minutes.**

 Keep an eye on the container and empty it before it overflows.

13. Once the process is complete, the machine will automatically switch into standby mode. The descaling process has finished.



## Machine maintenance



**DANGER** - risk of fatal electric shock

An electric shock can cause serious injuries and even death.

- Remove the mains plug from the wall socket before cleaning the machine.
- Never immerse the machine, mains plug or connection cable in water or any other liquids.
- Do not clean the machine with a water jet. Clean it only as described in the following instructions.

### CAUTION - material damage

Incorrect or insufficient cleaning can cause damage to the machine.

- Do not use any caustic, aggressive or abrasive products for cleaning.

	Daily	Weekly	As needed
Machine casing		X	X
Cleaning the water tank		X	X
Rinsing the water tank	X		X
Used capsule container, residual water tray	X		X
Residual water tray cover, cup tray	X		X

### Cleaning the casing

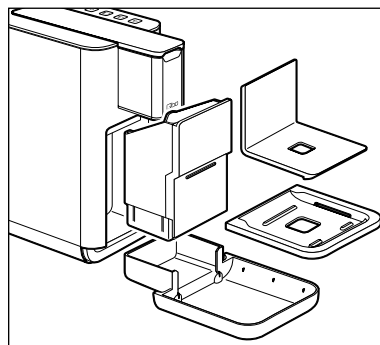
- ▷ Wipe the casing with a soft, damp cloth.
- ▷ If necessary, wipe the compartment for the used capsule container and the holder for the water tank with a soft damp cloth.

### Cleaning the water tank

- ▷ Clean the water tank using water and a little washing-up liquid. Then rinse it out thoroughly under running water and dry it.

**The water tank is not dishwasher-safe.**

### Cleaning the residual water tray, residual water tray cover, used capsule container, and cup tray




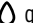
















1. Remove the residual water tray from the machine and disassemble all of the parts as illustrated.
2. Empty the used capsule container and the residual water tray.
3. Wash all of the parts using water and washing up liquid. Dry the parts well.

**The parts are all not dishwasher-safe.**



## Problems / solutions

The machine stops while preparing a beverage and while performing cleaning or descaling, and the cleaning button  is flashing in white.	<p>Is the water tank empty?</p> <ol style="list-style-type: none"> <li>1. Fill the water tank with fresh water and place it back in the machine.</li> <li>2. Press the cleaning button . The procedure that started previously will now continue.</li> </ol>	The beverage is not hot enough.	<p>Especially in the case of espresso, the quantity of coffee is so small compared with the size of the cup that it cools down more quickly.</p> <p>▷ Fill the cup with hot water, then pour that water away shortly before using the cup.</p> <p>This will ensure your beverage tastes its best.</p>
After the machine is switched on, the cleaning button  lights up blue for approx. 3 seconds.	<p>The machine needs to be cleaned.</p> <p>▷ Proceed as described in the “Cleaning” section.</p>		
After the machine is switched on, the cleaning button  glows continuously in red.	<p>The machine needs to be descaled.</p> <p>▷ Proceed as described in the “Descaling” section.</p>		
The three beverage buttons  ,  ,  are flashing.	<p>Was the machine's lever lifted up before the brewing process ended?</p> <ol style="list-style-type: none"> <li>1. Push the machine's lever back down again.</li> <li>2. Press one of the three beverage buttons , , .</li> </ol> <p>The brewing process will then resume and be completed.</p> <p> Only open the lever when the brewing process has ended or the three beverage buttons , ,  glow continuously again.</p>		
The cleaning button  and the three beverage buttons  ,  ,  are flashing.	<p>Is the machine's lever folded down as far as it will go?</p> <p>▷ Fold down the lever as far as it will go.</p>		

## Declaration of Conformity

Tchibo GmbH hereby declares that this product is in compliance with the essential requirements and other relevant provisions of the following directives at the time of it being placed on the market:

- 2006/42/EC - Machinery Directive
- 2014/30/EU - Electromagnetic Compatibility
- 2009/125/EC - Ecodesign Directive
- 2012/19/EU - WEEE
- 2011/65/EU - Restriction of the Use of Certain Hazardous Substances in Electrical and Electronic Equipment



The complete Declaration of Conformity can be found by entering the type/model number (**600 144**) at [www.tchibo.de/anleitungen](http://www.tchibo.de/anleitungen).

## Warranty

Tchibo GmbH grants a **24 month warranty** from the date of purchase.

Tchibo GmbH, Überseering 18, 22297 Hamburg, Germany

We will remedy all defects in workmanship or materials **within the warranty period**. In order for the warranty to be granted, all warranty claims must be accompanied by proof of purchase from Tchibo or from an authorised Tchibo distribution partner. This warranty is valid within the EU, Switzerland and Turkey.

**The warranty does not cover** worn parts, consumables, or damage resulting from improper use or inadequate descaling. Parts and consumables can be ordered from our Qbo service team.

This warranty does not restrict **statutory warranty rights**. Statutory warranty rights can be asserted free of charge.

---

## Service and repair

If, contrary to our expectations, a defect is found, please contact our Qbo service team. Our customer consultants will be happy to advise you on further procedure.

If you have any questions relating to product information, ordering accessories or servicing, please contact our Qbo service team. Please have the product number to hand in case of any queries.

---

## Qbo service team

Email: **service@tchibo.de**

## Product number



Product  
number

Type / Model

You can find your Qbo's product number on the type plate on the bottom of the casing. Before laying the Qbo on its side, remove the residual water tray and water tank. Place a cloth or

mat underneath to protect surfaces from any residual coffee or water that may leak out.