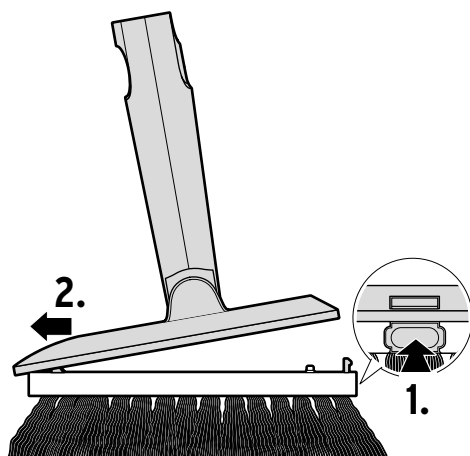
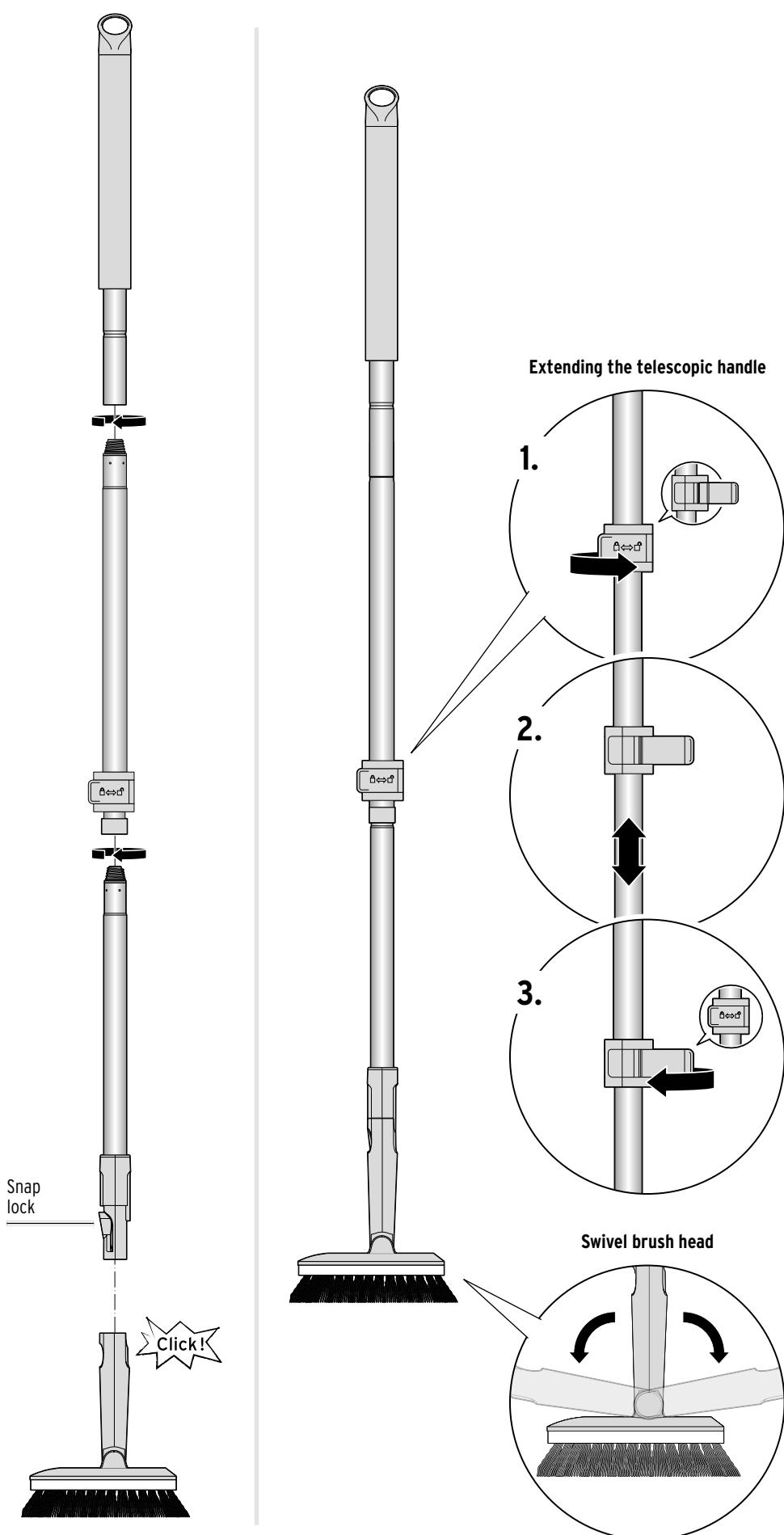


Removing the tile scrubber from the handle (for cleaning after use)



Attaching the tile scrubber to the telescopic handle (of the floor mop - product no. 718 426)



Important information

- Be careful when removing the tile scrubber from the telescopic handle so that you do not pinch your fingers on the snap lock.
- If necessary, wipe the telescopic handle with a damp, lint-free cloth.
- After use, clean the tile scrubber under warm running water and, if necessary, a mild detergent.
- If you wish to dispose of the product, do so in accordance with the current regulations. Dispose of the packaging separately.