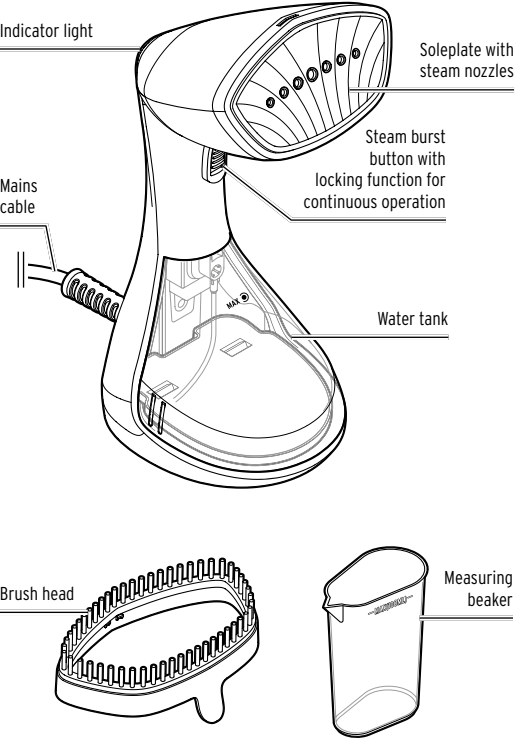


Steam brush




en Instructions for use



About these instructions

This product is equipped with safety features. Nevertheless, read the safety warnings carefully and only use the product as described in these instructions to avoid accidental injury or damage. Keep these instructions for future reference. If you give this product to another person, remember to also include these instructions.


Symbols used in these instructions:

-  This symbol warns you about the risk of injury.
-  This symbol warns you about the risk of injury caused by electricity.
-  This symbol warns you about burns caused by hot surfaces and/or scalds caused by steam being emitted.

WARNING warns about the potential risk of serious or fatal injury.

CAUTION warns about the potential risk of minor injury.

NOTICE warns about the potential risk of material damage.

 This indicates additional information.

Safety warnings

Intended use

This steam brush is suitable for smoothing or refreshing standard textiles. The steam brush works by generating steam. Using it without water is not permitted and may damage the appliance.

The product is suitable for use in dry, indoor rooms. Do not use it outdoors or in rooms with high humidity.

The product is designed for private use and is not suitable for commercial purposes.


Danger to children and people with limited ability to operate appliances

- This appliance may be used by children aged 8 years and over and by people with ...
 - ... reduced physical, sensory or mental capacities or
 - ... a lack of requisite experience and/or knowledge, provided that they ...
 - ... are supervised or
 - ... have been instructed in the safe use of the appliance and understand the potential dangers. Cleaning and maintenance must not be carried out by children without supervision. Children must not be allowed to play with the appliance. The steam brush and mains cable must be kept out of the reach of children under the age of 8 from the moment the appliance is switched on until it has completely cooled down.
- Keep the packaging materials out of the reach of children. They pose several risks, including the risk of suffocation!

Danger due to electricity

- Do not use the appliance if the appliance itself or its mains cable shows any signs of damage, if the appliance has been dropped or if water is leaking out. If you find that the mains cable, plug, housing or any other part shows signs of damage, discontinue use of the steam brush until the damage has been properly repaired.
- Do not make any modifications to the product. Do not attempt to replace the mains cable yourself either. Have repairs to the appliance or the mains cable carried out only by a specialist workshop. Improper repairs can result in considerable danger to the user.
- Remove the mains plug from the power socket ...
 - ... before filling the appliance with water or pouring water away,
 - ... if you are not using the appliance,
 - ... if malfunctions occur during use,
 - ... after use, and
 - ... before cleaning the appliance. Pull the plug out of the power socket even if you are only interrupting work with the steam brush for a short time. To do so, always pull on the mains plug, not the mains cable.
- Only connect the appliance to a properly installed, earthed power socket with a mains voltage that complies with the technical specifications of the appliance. Do not use an extension cable!
- The steam brush can be filled with water, but it must never be immersed in water or other liquids. Otherwise, there is a risk of electric shock. Never immerse the water tank in water either.
- Should water have spilled when filling the water tank, dry the tank thoroughly before reattaching it and plugging in the appliance.
- Do not direct the steam at electrical devices or power sockets. Ensure that there are no power sockets behind curtains that you wish to smooth, for example.
- Do not wind the mains cable around the appliance.
- The mains cable must not be kinked or crushed. Keep the mains cable away from the hot parts of the steam brush, other sources of heat and sharp edges.
- Ensure that the power socket is easily accessible, so that the mains plug can be disconnected quickly if necessary. Route the mains cable in such a way that it is not a tripping hazard.


Danger of scalds, burns and fire

- Do not leave the appliance unattended while it is connected to the power socket or while it is still hot.
-  **WARNING. Hot surface.** The soleplate and the area around it become hot during use. The emitted steam is extremely hot! Touching the hot parts of the steam brush and the discharging steam will lead to burns and scalds.
- Never steam or smooth textiles while they are being worn! You must also never hold your hand under textiles to support them or hold them taut while they are being steamed.
- Never point the steam brush at people or animals, especially not when pressing the steam burst button.
- Let the appliance cool down before attaching or removing the brush head and before cleaning the appliance or refilling the tank with water.
- Always use the steam brush on a stable surface when steam ironing and only set it down on a stable surface. Avoid contact between heat-sensitive surfaces and the soleplate.
- Before using the appliance, ensure that the steam nozzles are not obstructed.

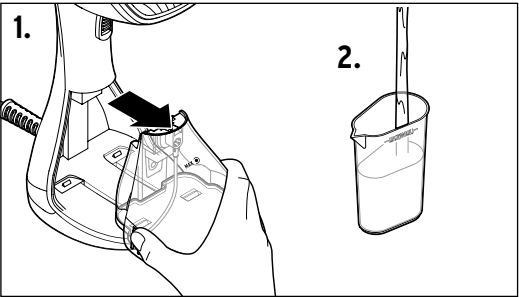
Material damage

- Never operate the appliance when the water tank is empty. Regularly check how much water is in the tank before and during use.
- Empty the water tank after every use.
- Follow the instructions on the sewn-in labels of the garments that you wish to smooth. Polyacrylics, acetate-polyamide blends and similar materials must not be smoothed or steamed.
- Do not use any caustic, aggressive or abrasive products for cleaning.
- The appliance cannot be descaled.** Therefore, only fill it with distilled or demineralised water whenever possible. Do not fill it with vinegar or a descaling agent.

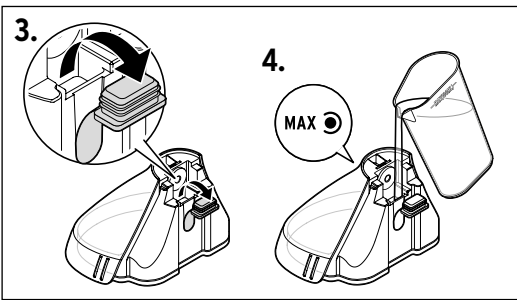
Filling the water tank

 **WARNING - risk of fatal electric shock**

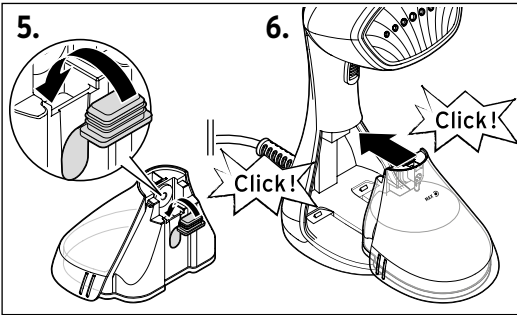
- Pull the mains plug out of the power socket before filling the steam brush with water.
- Should water have spilled when filling the water tank, dry the tank thoroughly before reattaching it and plugging in the appliance.




- Grasp the water tank on both sides as shown and pull it forwards out of the appliance.
- Fill the measuring beaker to the brim with distilled or demineralised water.



- Open the cap on the water tank.
- Pour water into the filling opening in the water tank. Fill the measuring beaker a second time and pour the water into the water tank **up to the MAX marking**.




- Close the filling opening again.
 - Slide the water tank back into the appliance as far as it will go. You must hear and feel it click into place.
-  Do not use any water with additives, e.g. starch or perfume! To avoid limescale deposits, only use commercially available distilled or demineralised water.

Prior to first use

 **CAUTION - risk of fire**

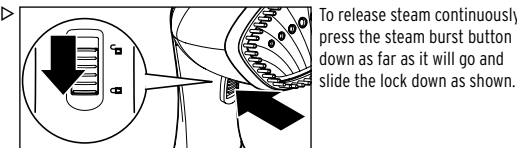
- Always set the appliance down upright.

 There may be a slight odour when using the appliance for the first time. This is harmless. Ensure there is adequate ventilation.

Production residue may have been left on the steam brush soleplate from the manufacturing process.

We therefore recommend that you first smooth an old cotton cloth or something similar to remove any polish residue before using your new steam brush on your laundry, clothes, etc.

- Hang an old garment on a coat hanger.
- Add water as described in the chapter titled "Filling the water tank".
- Unwind the mains cable fully.
- Insert the mains plug into the power socket. The indicator light will light up blue while the appliance is heating up. The indicator light will go out as soon as the operating temperature is reached.



i Since water must first be pumped into the steam generator, it is possible that no steam will come out to start with.

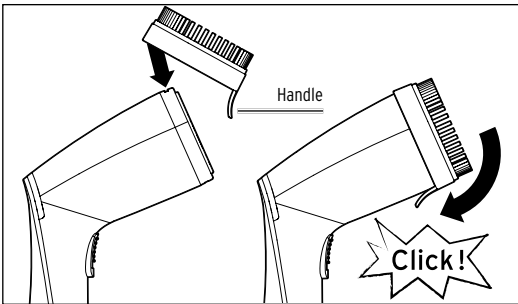
5. Move the steam brush down over the old garment until the water tank is completely empty.
6. Unplug the mains plug from the power socket and leave the appliance to cool down.

Use

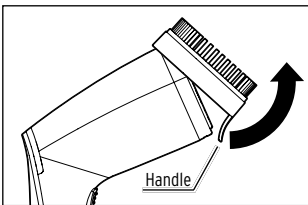
Attaching/removing the brush head

! CAUTION - risk of burns

- The soleplate and the area around it become hot during use.
- Allow the appliance to cool down before attaching or removing the brush head.



▷ To attach the head, place the brush head on the soleplate from the top as shown. The handle on the brush head must point downwards. You must hear and feel the brush head click into place.



▷ To remove the brush head, pull it off the soleplate as shown using the handle.

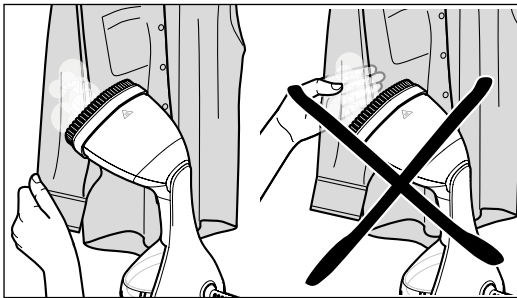
Smoothing garments with the brush head

- When the steam burst button is pressed, water is pumped into the heating system and is emitted from the nozzles as steam. This steam penetrates deep into the fabric.
- Always test the appliance on a concealed part of the fabric first.
- With delicate fabrics such as wool, wool blends, corduroy, velvet and silk, apply the steam at some distance from the fabric.

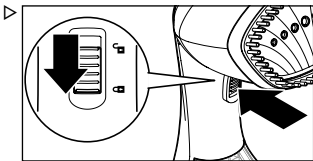
1. Add water as described in the chapter titled "Filling the water tank".
2. Hang the garment on a coat hanger. Hang trousers by the end of the trouser legs.
3. Insert the mains plug in the power socket.
The indicator light will light up blue while the appliance is heating up. The light in the button will go out as soon as the operating temperature is reached.

! CAUTION - risk of scalds!

- Never hold your hand under textiles to support them or hold them taut while they are being steamed.



4. Pull the fabric taut with your free hand. Applying slight pressure, place the appliance on the area that is creased. Briefly press the steam burst button and then release it. Move the appliance downwards over the garment and smooth it with the attached brush. While doing so, repeatedly press the steam burst button.



For prolonged use, press the steam burst button down as far as it will go and slide the lock down as shown.

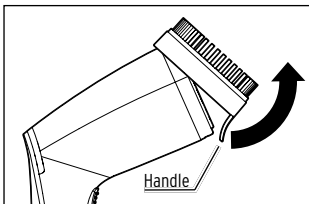
- ▷ If the water tank runs dry at some point, switch off the appliance and allow it to cool down. Refill the water tank before switching the appliance on again.
5. Pull the mains plug from the power socket and allow the appliance to cool down before emptying the water tank and putting the appliance away.

Drapes and curtains

Drapes and curtains, like garments, are treated while they are hanging and do not need to be taken down. Hang up other types of fabric, such as tablecloths, over a rail. Always carry out a test on a concealed part of the fabric first.

Steam ironing

- The steam iron function is suitable for all textiles that are marked with 3 dots (---).
- The steam brush can be used both horizontally and vertically, but the best results are usually achieved when used vertically.



1. Remove the brush head if you have attached it.

2. Place the textile on an ironing board. The steam brush can be used both upright and horizontally.
3. Proceed as described in the section "Smoothing garments with the brush head", steps 3 and 4.
4. Pull the mains plug from the power socket and allow the appliance to cool down before emptying the water tank and putting the appliance away.

After use

Cleaning

⚡ WARNING - risk of fatal electric shock

- Remove the mains plug from the power socket before cleaning the appliance.

! WARNING - risk of burns

- Allow the appliance to cool down before cleaning it.

NOTICE - material damage

- Do not use any caustic, aggressive or abrasive products for cleaning.

1. Remove the mains plug from the power socket.
2. Leave the appliance to cool down completely.
3. Empty the water tank.
4. Wipe the housing with a slightly dampened cloth as necessary.
5. Remove fluff and other residue from the brush head.

Storage

NOTICE - material damage

- Do not store the steam brush by standing it on the bristles of the brush head.
- To avoid damage to the mains cable, do not wind the cable around the appliance.

▷ Store the steam brush upright whenever possible in a place protected from dust, moisture, direct sunlight and extreme temperatures.

Technical specifications

Model/product number:	730 702
Mains voltage:	220-240 V ~ 50-60 Hz
Protection class:	I
Power:	1600 W
Water tank capacity:	approx. 220 ml
Operating time with one full tank (MAX):	approx. 2.5 minutes
Steam output:	15-25 g/min
Manufactured by:	Commaxx BV Wiebachstraat 37 6466 NG Kerkrade The Netherlands



Disposal

The product and its packaging have been manufactured from valuable materials that can be recycled. Recycling reduces the amount of refuse and preserves the environment.

Dispose of the **packaging** at a recycling point that sorts materials by type. Make use of the local facilities provided for collecting paper, cardboard and lightweight packaging.



Appliances marked with this symbol must not be disposed of along with normal household waste!

You are legally obliged to dispose of old appliances separately from household waste. Electronic appliances contain hazardous substances and, if stored or disposed of improperly, may cause harm to health and the environment. Information about collection points where old appliances can be disposed of free of charge is available from your local authorities.