

Safety warnings

Read the safety warnings carefully and only use the product as described in these instructions to avoid accidental injury or damage.

Intended use

The fabric shaver removes small fluff and bobbles, i.e. pilling, that can form on textiles. It is suitable for treating smooth textiles as well as coarser fabrics, woollen fabrics, woollen jumpers or similar materials. It is not suitable for removing very large fluff. This product is designed for private use and is not suitable for commercial purposes.

Danger to children and people with limited ability to operate devices

- This device may be used by children aged 8 and over and by people with diminished physical, sensory or mental capacity or lacking the requisite knowledge/experience, provided they are supervised or have been instructed in the safe use of the device and understand the potential dangers. Children must not clean the product, unless they are over the age of 8 and are supervised by an adult. This product is maintenance-free.
- Children must not be allowed to play with the device. Keep children under 8 years of age away from the device.
- Keep the product out of the reach of children.
- Keep the packaging materials out of the reach of children. They pose several risks, including the risk of suffocation!
- Swallowing batteries can be fatal. If a battery is swallowed, it can cause severe internal chemical burns and even death within 2 hours. Therefore, keep both new and old batteries and the product out of the reach of children. If you think that a battery has been swallowed or has got into the body in any other way, seek medical advice immediately.

Warning – risk of fire/explosion

- Batteries must not be taken apart, thrown into fire or short-circuited. In addition, single-use batteries must not be charged.

Risk of injury

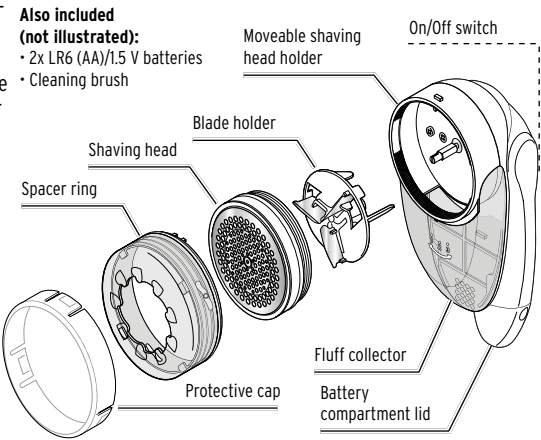
- The blades are very sharp. Be careful so as not to injure yourself when removing the shaving head. Do not touch the blades. Before cleaning the device, remove the batteries to prevent the motor starting accidentally. This will reduce the risk of cuts, bruises or damage to the product.
- Do not use the device if it shows any signs of damage.
- Do not make any modifications to the product. Have repairs to the product carried out only at a specialist workshop. Improper repairs can result in considerable danger to the user.
- If a battery has leaked, avoid all contact with skin, eyes and mucous membranes. If necessary, rinse the affected areas with water and consult a doctor immediately.

Material damage

- The product must not be allowed to come into contact with water. Therefore, never use it on damp textiles and never immerse the device in water.
- **The fabric shaver may damage structured textiles or very delicate fabrics.** For this reason, test the fabric shaver on an area where it will not be noticeable.
- **Always use the spacer ring for coarser, structured textiles.**
- Protect single-use/rechargeable batteries from excessive heat. Remove the batteries from the product when they are flat or if you do not intend to use the product for a longer period of time. This will prevent damage caused by leakage.
- Always replace all batteries at once. Do not mix old and new batteries, different types or brands of batteries, or batteries with different capacities. When inserting the batteries, ensure the polarity (+/-) is correct.
- If necessary, clean the battery and device contacts before inserting the batteries. Risk of overheating!

Every time the shaver is used, it removes some material from the textile. This can lead to the remaining material becoming thinner and less tear-resistant.

At a glance (contents)



Inserting / replacing batteries

1. If necessary, slide the On/Off switch to **0**.
2. Pull the battery compartment cover downwards.
3. Insert the batteries as illustrated. Ensure that the polarity (+/-) is correct.
4. Replace the battery compartment cover - it can only be fitted in one position. You must hear and feel it click into place.

The batteries must be replaced when the fabric shaver's motor becomes audibly quieter, even though the fluff collector is empty.

Use

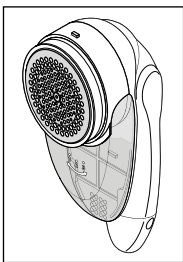
NOTICE - material damage

Only shave dry fabrics. The product must not be allowed to come into contact with moisture.

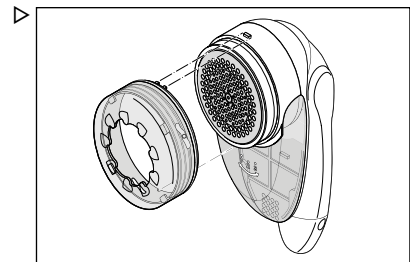
NOTICE - material damage

- **The fabric shaver may damage structured textiles or very delicate fabrics.** For this reason, begin on an area where it will not be noticeable.
- **Always use the spacer ring for coarser, structured textiles.**

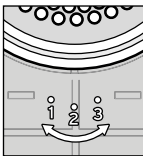
1. Lay the fabric you would like to shave on an even surface and smooth it out.



Remove the protective cap from the fabric shaver and, if necessary, the spacer ring from the shaving head. The shaving head without the spacer ring is only suitable for very smooth textiles, as it shaves close to the surface.



For coarser wool surfaces, attach the spacer ring so that it is mounted firmly on the locking lugs above and below the cutting surface. You can set the spacer to one of three positions:



- 1 - For fine textiles, shaves closer.
- 2 - For coarser textiles, shaves with medium spacing.
- 3 - For coarse textiles, shaves with maximum spacing.

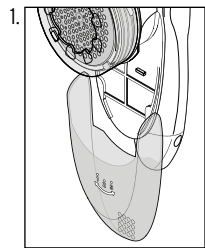
3. Slide the On/Off switch to **1** to switch the device on. Select position **2** for faster speed.
4. **Gently** pass the shaving head over the fabric, **without applying any pressure.** For patterned knits, follow the grain. You may damage the fabric if you shave against the grain. Fluff and bobbles are removed and collected in the fluff collector.
5. After use, slide the On/Off switch to **0** to switch the device off.

- Always attach the protective cap when the product is not in use.

Empty the fluff collector in good time. If the motor becomes weaker or stops, it could be due to an overflowing fluff collector.

Cleaning

Emptying the fluff collector

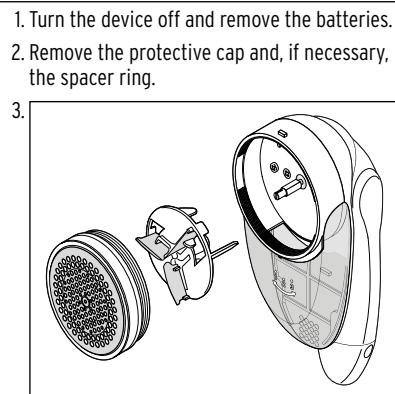


1. Switch the device off and pull the fluff collector downwards to remove it.
2. Empty the collector.
3. Push the fluff collector back on until you can hear and feel it click into place.

Cleaning the casing and shaving head

CAUTION - risk of injury

- Remove the batteries before cleaning the product in order to avoid accidentally switching the product on and cutting yourself or trapping your fingers.
- Do not touch the blades. They are very sharp.



- Unscrew the shaving head anti-clockwise.
4. Carefully remove the blade holder from the product.
5. Brush away any fabric particles with the cleaning brush.
6. Carefully replace the blade holder.
7. Screw the shaving head on again in a clockwise direction and replace the spacer ring and the protective cap.

8. Reinsert the batteries.
9. Wipe the outside of the casing with a damp cloth.

Technical specifications

Model:	718 177
Single-use batteries:	2x LR6/1.5 V (ZnMnO2)
Operating time:	approx. 90 min. (with 1 set of batteries)
Ambient temperature:	+10 to +40 °C
Made exclusively for:	Tchibo GmbH, Überseering 18, 22297 Hamburg, Germany

**Information about the supplied batteries**  
*Manufacturer:* Tiger Head Hi-Watt Battery (HK) Company Limited, Flat/RM 705B, 7/F., Harbour Crystal Centre, 100 Granville Road, Tsimshatsui East, KL, Hong Kong  
PEOPLE'S REPUBLIC OF CHINA  
*https://www.hi-watt.com.hk*  
*Email:* HW@hi-watt.com.hk  
*Model:* HW LR6 AA 1.5V  
*Manufacturing date :* 2025/05  
*Made in :* China

Disposal

Dispose of the **packaging** at a recycling point that sorts materials by type. Make use of the local facilities provided for collecting paper, cardboard and lightweight packaging.

**Devices, single-use batteries and rechargeable batteries** marked with this symbol must not be disposed of along with household waste! You are legally obliged to dispose of old devices separately from household waste. Electronic devices contain hazardous substances and, if stored or disposed of improperly, may cause harm to health and the environment. Information about collection points where old devices can be disposed of free of charge is available from your local authorities. Flat single-use and rechargeable batteries must be handed in at a local authority collection point or returned to a battery retailer. Tape off the contacts of lithium single-use/rechargeable batteries prior to disposal.