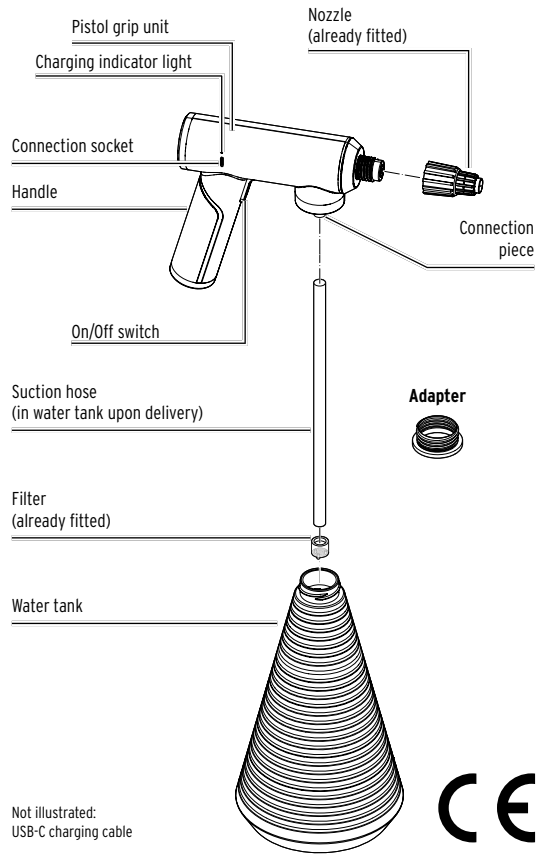


Electric spray bottle

en Instructions for use

At a glance (contents)



For your safety

Read the safety warnings carefully and only use the product as described in these instructions to avoid accidental injury or damage. Keep these instructions for future reference. If you give this product to another person, remember to also include these instructions.

Intended use

- The product is suitable for watering plants in dry, indoor rooms. Water-based fertilisers and acid-free pesticides can be added to the water.
- This product can also be used for household cleaning purposes with mild, commercially available window and household cleaners.
- It is not suitable for use with highly irritating or corrosive liquids such as toilet cleaners, aggressive cleaning agents etc.
- It is also not suitable for spraying paint or other sticky liquids or for use with aromatic oils, chlorinated water, acids, alkalis, emulsions or liquids with abrasive particles etc.
- The product is designed for private use and is not suitable for commercial purposes.

Danger to children

- Children are not aware of the risks involved in handling electronic devices and appliances incorrectly. Therefore, keep children away from the product.
- Keep small swallowable parts (e.g. filters) and packaging materials out of the reach of children. They pose several risks, including the risk of suffocation and choking!

Danger due to electricity

- Do not use the product if it shows any signs of damage.
- Do not make any modifications to the product. Have repairs to the product carried out only by a specialist workshop. Improper repairs can result in considerable danger to the user.
- The water tank can be filled with water, but the pistol grip unit must never be immersed in water or other liquids. Otherwise, there is a risk of electric shock. If water has accidentally run over the pistol grip unit, the appliance must not be put into operation or connected to the mains for charging until the unit is completely dry.
- Do not hold the product upside down during use to prevent water from running into the pistol grip unit.

When charging the product, note the following:

- Empty the water tank before charging the battery.
- Only use suitable mains adapters (see "Technical specifications").
- Do not use a faulty mains adapter and do not attempt to repair a faulty mains adapter.
- Only connect the product to a properly installed power socket with a mains voltage that complies with the technical specifications of the mains adapter. The product must not be connected to the mains in damp rooms.
- Unplug the mains adapter from the power socket if malfunctions occur while charging, after charging, during thunderstorms, before filling or topping up with water and before cleaning the product. Always pull on the mains adapter, not on the connection cable.
- The appliance will become warm during the charging process. Do not cover the appliance while it is charging.

Danger due to explosion

- You cannot and must not remove or replace the rechargeable battery integrated into the product yourself. There is a risk of explosion if the battery is replaced improperly. If the rechargeable battery is faulty, dispose of the product as described in the chapter "Disposal".

Material damage

- The water temperature must be between +5 °C and +35 °C.
- Regularly check to see how full the water tank is. The suction hose must be submerged in the water. Operating the product without sufficient water may damage the pump.
- Make sure that the filter is fitted to the suction hose and is clean so that no dirt can get into the pump and clog it.
- Avoid storing, charging and using the product at extreme temperatures and in areas of extremely low air pressure (e.g. at high altitudes).
- Do not under any circumstances open or remove any part of the pistol grip casing. Do not insert any objects into the openings in the casing.
- Do not expose the product to open flames, damp environments, high temperatures, direct sunlight or anything similar. Also protect the product from knocks, vibrations and other forms of mechanical shock.
- Do not use any caustic, aggressive or abrasive products with the product or to clean the product.

Information on the rechargeable battery:

- The product contains a lithium-ion rechargeable battery. This battery must not be taken apart, thrown into fire or short-circuited.
- Do not modify and/or deform/heat/dismantle rechargeable batteries. Do not forcibly discharge the battery.
- Keep the battery out of the reach of children.
- Do not attempt to disassemble or reassemble the battery.
- Dispose of the battery as described in the chapter "Disposal".

Prior to first use

Assembly

Assemble the spray bottle as shown in the chapter "At a glance (contents)" and as described below:

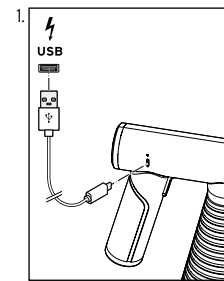
1. Push the hose onto the connection piece.
2. Screw the nozzle onto the pistol grip unit.

Charging the rechargeable battery

The built-in rechargeable battery comes in a half-charged state. This is to prevent it from becoming damaged. Charge the battery fully before using the appliance for the first time.

You will need a USB mains adapter (not included); see "Technical specifications".

- ▷ If the water tank is not empty, empty it first.



2. After charging, unplug the mains adapter from the power socket and the USB-C charging cable from the connection socket.

Plug one end of the USB-C charging cable into the connection socket on the pistol grip unit and the other end into the USB mains adapter (not included). The charging indicator light will show red. When the charging indicator light goes out, the battery is fully charged. When the battery is flat, it normally takes approx. 2-3 hours to fully charge it. The duration of use is approx. 30-60 minutes when the battery is fully charged.

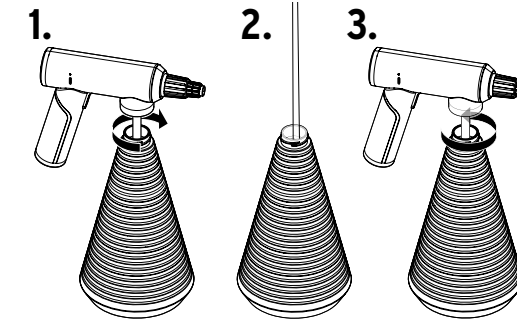
Information on rechargeable batteries

- To preserve the rechargeable battery's full capacity for as long as possible, you should fully recharge the battery every 2 to 3 months, even if you do not use the product.
- Charge the battery in an environment between +10 and +40 °C.
- The battery will best hold its charge at room temperature. The lower the ambient temperature, the shorter the battery life.
- The battery must be charged if the spray bottle stops spraying.

Use

Filling

- ▷ If the product is not switched off, switch it off first (see section "Spraying").

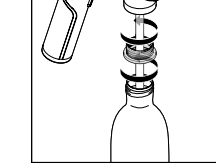


1. Unscrew the water tank from the pistol grip unit.
2. Fill the water tank with tap water.
3. Insert the suction hose into the water tank and screw the water tank back onto the pistol grip unit.

Adapter

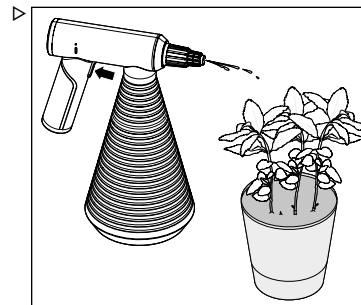
The adapter can be used to screw the pistol grip unit onto other suitable commercially available plastic bottles with a capacity of approx. 1 l.

- ▷ To do so, screw the adapter onto the pistol grip unit and screw the plastic bottle onto the adapter.

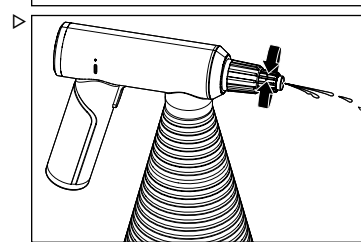


Spraying

- Point the nozzle at the plant or flower pot before switching on the appliance.

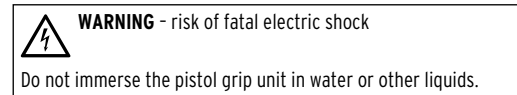


Press the On/Off switch to turn the appliance on or off. Hold the spray bottle upright so the suction hose is in the water at all times.



To adjust the jet, twist the front section of the nozzle:
To the right (in the direction of spray): Single narrow jet.
To the left (in the direction of spray): Fine spray mist.

Cleaning



- ▷ If the appliance is not switched off, switch it off first.

1. Unscrew the water tank or the plastic bottle and adapter and pour out any remaining water.
 2. Unscrew the nozzle.
 3. Wipe off the pistol grip unit with a slightly damp, lint-free cloth.
 4. Clean all parts with clean water and, if necessary, a toothbrush or similar implement.
 5. Reassemble the spray bottle as described under "Prior to first use".
- ▷ If you have added pesticides or other additives to the water during use, fill the water tank with clear tap water afterwards, direct the jet into a sink and spray for a few moments to purge the spray system.

Technical specifications

Model:	ES 100
Product number:	734 281
Rechargeable battery:	lithium-ion 3.7 V DC 800 mAh, Watt-hour rating: 2.96 Wh (tested as per UN 38.3) (non-replaceable)
Charging time:	approx. 2-3 hours
Duration of use:	approx. 30-60 minutes
Power consumption in off mode:	≤ 0.3 W
Mains adapter (not included):	Input: AC 100-240 V ~ 50/60 Hz Output: DC 5 V 1.0 A
Water tank capacity:	1 l
Ambient temperature:	+10 to +40 °C
Manufactured by:	Jaxmotech GmbH, Ostring 60 66740 Saarlouis, Germany info@jaxmotech.de

In the course of product improvement, we reserve the right to make technical and optical modifications to the product.

Information about the built-in rechargeable battery:

Manufacturer:	SHANTOUSHI YAOHUI NEW ENERGY CO., LTD., Lianxia Town, Liannan Industrial Zone, Chenghai District, 515041 Shantou City, Guangdong Province, PEOPLE'S REPUBLIC OF CHINA
Email:	YaoHuiNew@163.com
Model:	18650/800 3.7 V d.c., 800 mAh, 2.96 Wh
Manufacturing date:	2025/11
Made in:	China

Disposal

The product, its packaging and the built-in rechargeable battery have been manufactured from valuable materials that can be recycled. Recycling reduces the amount of refuse and preserves the environment. Dispose of the packaging at a recycling point that sorts materials by type. Make use of the local facilities provided for collecting paper, cardboard and lightweight packaging.

- Appliances, single-use batteries and rechargeable batteries** marked with this symbol must not be disposed of along with household waste!
 You are legally obliged to dispose of old appliances separately from household waste. Electronic appliances contain hazardous substances and, if stored or disposed of improperly, may cause harm to health and the environment. Information about collection points where old appliances can be disposed of free of charge is available from your local authorities.

Flat single-use and rechargeable batteries must be handed in at a local authority collection point or returned to a battery retailer. Tape off the contacts of lithium single-use/rechargeable batteries prior to disposal.

Warning! This appliance contains rechargeable batteries that, for safety reasons, are firmly built into the appliance and cannot be removed without destroying the casing. Improper disassembly leads to safety hazards. For this reason, take the appliance intact to a collection point where the appliance and battery will be disposed of properly.