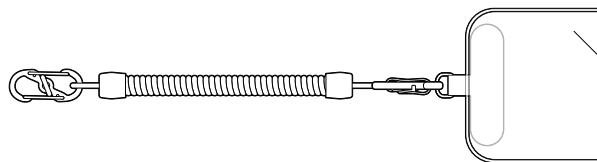


Suitable for cases with a cable opening of approx. 1 cm width.

Mobile phone safety chain



Product number: 729 409

Tchibo GmbH D-22290 Hamburg · 153078AB2X2XVI · 2025-09

Dear Customer

Your new mobile phone safety chain prevents you from losing or forgetting your smartphone and reduces the risk of theft as well as damage due to falling.

It is also suitable for use with other valuables with eyelets, such as keys or similar items.

• Notice: While the mobile phone safety chain reduces the aforementioned risks, it cannot completely prevent them. Remain watchful with regard to your smartphone.

• Warning: This product is not a toy. It contains small swallowable parts. Keep the product out of the reach of children.

• Load bearing capacity: max. 2 kg. Do not hang any heavier objects on the safety chain.

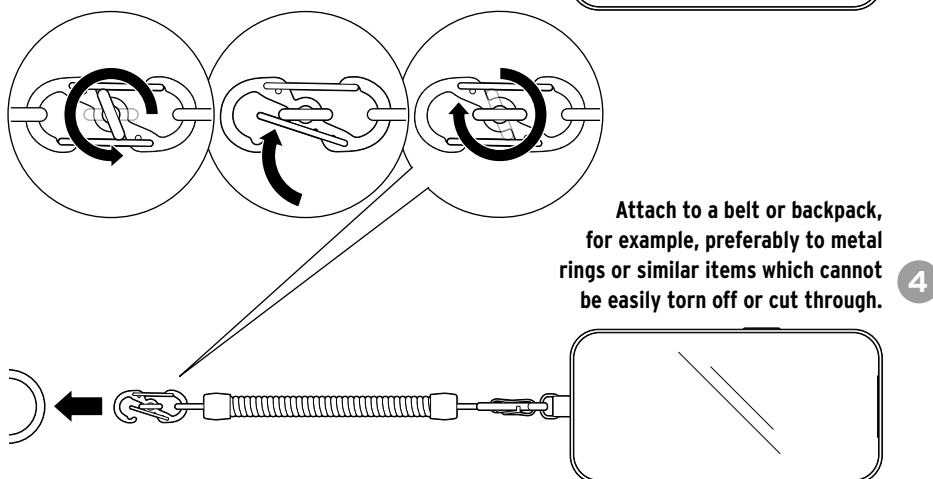
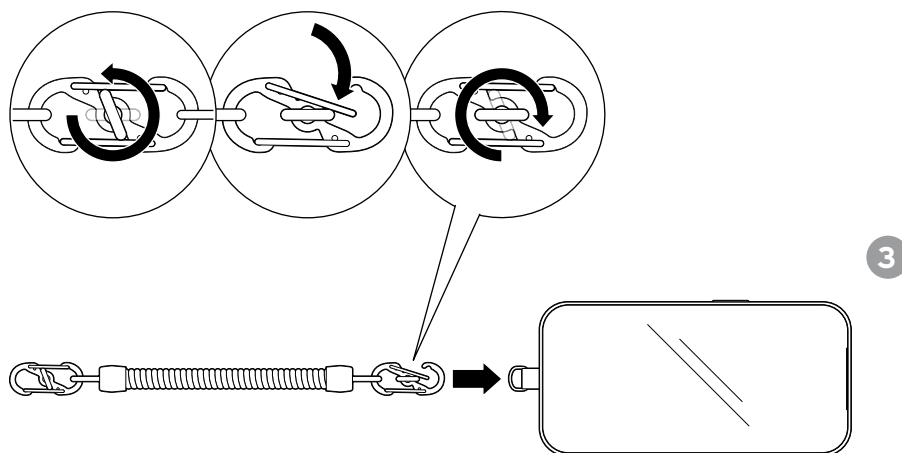
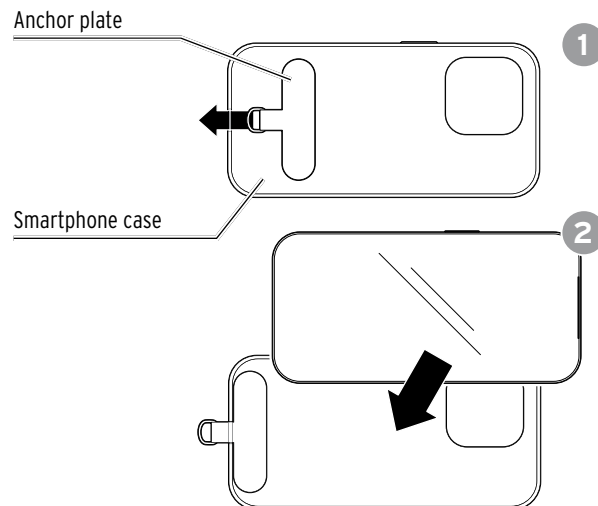
• Do not overstrain the product, e.g. by forceful pulling or swinging it around. There is a risk of permanent deformation or damage. In this case, stop using the safety chain.

• Ensure that your smartphone is securely in its case and that all carabiner hooks are securely closed before use.

• The anchor plate will wear out over time depending on the usage conditions and frequency of use. Therefore, regularly check the condition of the anchor plate before use, as otherwise your smartphone could fall down or be damaged. Stop using the safety chain if there is visible wear or damage.

• Important: We do not assume any liability for damage to your smartphone or other objects or persons resulting from the use of this product.

Your Tchibo Team



Attach to a belt or backpack, for example, preferably to metal rings or similar items which cannot be easily torn off or cut through.