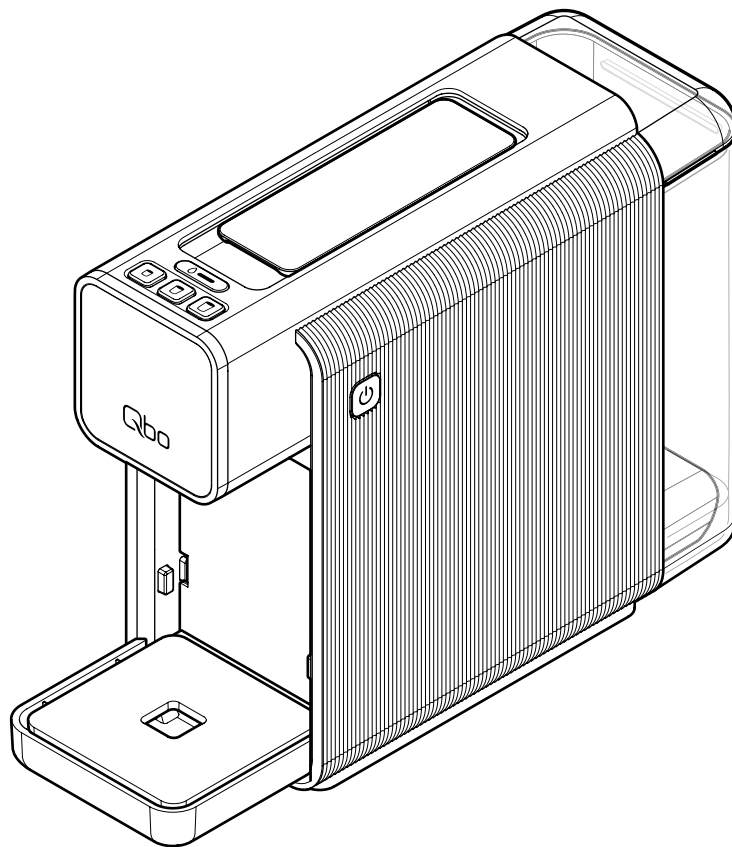


*Tchibo* | Qbo

ONE



**en** Original instructions for use and warranty

## Contents

- |    |   |    |  |
|----|---|----|--|
| 2  | Technical specifications                          | 10 | Preparing beverages  |
| 2  | Disposal  | 11 | After use  |
| 3  | About these instructions                          | 12 | Adjusting beverage strength (beverage volume)                                |
| 3  | Safety warnings                                   | 12 | Restoring the factory settings   |
| 5  | At a glance (contents)                            | 13 | Cleaning - removing coffee residue in the machine with Qbo cleaning capsules |
| 6  | Removing protective films and packaging materials | 14 | Descaling  |
| 6  | Initial operation - prior to first use            | 16 | Machine care   |
| 7  | Rinsing the machine                               | 17 | Problems / solutions   |
| 8  | The finest aroma - the finest flavour             | 18 | Declaration of Conformity  |
| 9  | Using small / large cups or glasses               | 18 | Warranty   |
| 9  | Switching the machine on/off                      | 18 | Service and repair   |
| 9  | Automatic switch-off                              | 18 | Qbo service team   |
| 10 | Filling the water tank                            | 18 | Product number   |

## Technical specifications

Type/model number:	MQB25110	Capacity capsule container:	6 capsules
Mains voltage:	220-240 V / 50 Hz	Preset brew quantities:	Caffè Grande approx. 180 ml Caffè approx. 125 ml Espresso approx. 40 ml
Power:	1400 W	Made exclusively for:	Tchibo GmbH, Überseering 18, 22297 Hamburg, Germany
Power consumption when switched off:	< 0.3 W		
Protection class:	I		
Pump pressure:	20 bar		
Sound pressure level:	< 70 dB(A)		
Capacity water tank:	700 ml		



## Disposal

The product and its packaging have been manufactured from valuable materials that can be recycled. Recycling reduces the amount of refuse and helps to preserve the environment. Dispose of the **packaging** at a recycling point which sorts materials by type. Make use of the local facilities provided for collecting paper, cardboard and lightweight packaging.



**Appliances** marked with this symbol must not be disposed of along with normal household waste! You are legally obliged to dispose of old appliances separately from household waste. Electronic appliances contain hazardous substances and, if stored or disposed of improperly, may cause harm to health and the environment. Information about collection points where old appliances can be disposed of free of charge is available from your local authorities.



[www.tchibo.de/instructions](http://www.tchibo.de/instructions)

## About these instructions

This product is equipped with safety features. Nevertheless, read the safety warnings carefully and only use the product as described in these instructions to avoid accidental injury or damage.

Keep these instructions for future reference.

If you give this product to another person, remember to also include these instructions.

Symbols used in these instructions:



This symbol warns you about the risk of injury.



This symbol warns you about the risk of injury caused by electricity.

Signal words used in these instructions:

**DANGER** warns about the imminent risk of serious or fatal injury.

**WARNING** warns about the potential risk of serious or fatal injury.

**NOTICE** warns about the potential risk of material damage.



This indicates supplementary information.

---

## Safety warnings



### Intended use

The machine is designed for brewing coffee and espresso with Qbo brand capsules.

The machine has been designed for household use and use in household-like environments, e.g.

- in shops, offices or similar work areas,
- in agricultural buildings,
- by guests in hotels, motels, bed and breakfasts or other places offering accommodation.

If the machine is used for commercial purposes, it must be overseen and cleaned by trained personnel. Maintenance that goes beyond cleaning and descaling is not necessary for this machine.

Only use the machine for its intended use. Do not use it for any other purpose.

### Location

Set up the machine in a dry, indoor room. Avoid rooms with high levels of humidity or a high dust content. The machine is suitable for use at ambient temperatures of +10 °C to +40 °C.

### Danger to children and to people with limited ability to operate appliances

- Children must not play with the appliance. Keep the appliance and mains cable away from pets and from children under the age of 8.
- This appliance may be used by children aged 8 and over and by people with diminished physical, sensory or mental capacity or lacking the requisite knowledge/experience, provided they are supervised or have been instructed in the safe use of the appliance and understand the potential dangers.
- Children must not be allowed to clean the appliance unless they are over 8 years of age and supervised while doing so. This appliance is maintenance-free.
- Set up the machine out of the reach of children.
- Keep the packaging materials out of the reach of children. They pose several risks, including the risk of suffocation!

### Danger due to electricity

- Never immerse the machine, mains plug or mains cable in water, as there is otherwise a danger of electric shock. Do not clean the machine using a water jet and do not position it anywhere it could be cleaned with a water jet. Never touch the mains plug with damp hands. Do not use the machine outdoors.
- Never leave the machine to operate unattended.
- Only connect the machine to a properly installed power socket with earthed contacts. The mains voltage must comply with the requirements stated in the machine's technical specifications.
- The mains cable must not be kinked or crushed. Keep the mains cable away from sharp edges and sources of heat.

- Do not use the machine if the machine, mains cable or mains plug is damaged, or if the machine has fallen down.
- Never place any beverages or other objects on top of the machine.
- Do not make any modifications to the machine, mains cable or other parts. Electrical appliances must only be repaired by qualified electricians, as improper repairs can cause considerable damage. Have repairs carried out only by a specialist workshop or our customer care service.
- If the mains cable of this machine becomes damaged, it must be replaced by the manufacturer, its customer service or a similarly qualified person in order to avoid danger.
- Remove the mains plug from the power socket ...
  - ... if a malfunction occurs,
  - ... if the machine will not be used for a longer period of time,
  - ... before you remove any parts of the machine for cleaning,
  - ... before you wipe the machine housing clean.
 Always pull on the plug, not on the mains cable.
- To disconnect the machine from the mains completely, remove the mains plug from the power socket.

### **Danger of fire/burns/scalds**

- Position the machine in such a way that it is free-standing for use; never place it directly against a wall, in a corner, in a cupboard, against curtains, etc.
- Do not cover the machine while it is in use (e.g. with newspapers, blankets, clothes, etc.).
- Do not touch the beverage spout during or immediately after use. Avoid coming into contact with the beverage coming out of the spout.
- While the machine is in operation, ensure that you do not lift up the lever, that you keep the capsule feed closed, and that you do not pull out the leftover water tray with the used capsule container.
- Do not touch the housing during or immediately after use. The heating element under the housing will still emit residual heat after use.

### **Danger - damage to health**

- Regularly empty and clean the used capsule container and leftover water tray.
- If you will not be using the machine for a longer period of time, empty the water tank, used capsule container and leftover water tray.
- Change the water in the water tank daily to prevent germs from collecting.
- Use only the cleaning and descaling agents listed in these instructions as well as the relevant cleaning utensils to clean this machine. The use of other cleaning agents can lead to health hazards.


### **Danger - risk of injury**

- There are piercing pins inside the capsule feed. When the lever is pressed down, these pins pierce the capsule casing from both sides. Never reach into the capsule feed. Keep your fingers and any objects away from the capsule feed as you press down the lever.
- Route the mains cable in such a way that it cannot be tripped over. Do not let the cable hang down from the surface the machine is put on in order to ensure that the machine cannot be pulled down by it.

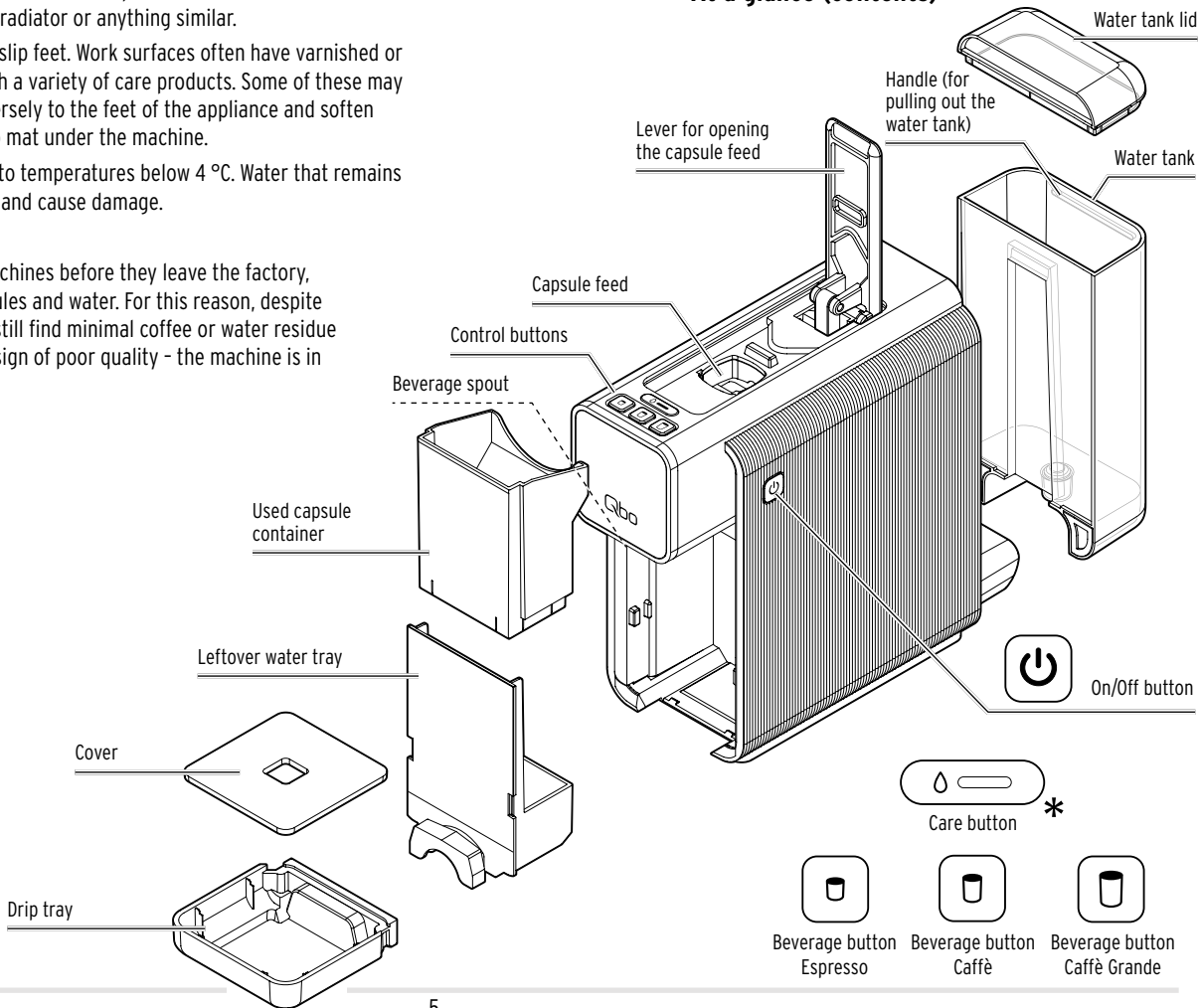
### **Material damage**

- Use original Qbo capsules only. Do not use capsules from other manufacturers, nor damaged or deformed capsules, and never use ground coffee or coffee beans, as this would damage the machine. In these cases, any necessary repairs would not be covered by the warranty.
- The machine must only be operated when the leftover water tray and used capsule container are inserted.
- Pour only fresh, cold tap water or other drinking water into the water tank. Do not use carbonated mineral water or any other liquid.
- Descale the machine as soon as it indicates that this is necessary.
- Do not lift the machine up by the lever. To move the machine, hold it by the outer housing.
- Place the machine on a solid, level surface that is well illuminated and resistant to water and heat.

- To ensure that the housing does not melt, do not place the machine on a hob or immediately next to a hot oven, radiator or anything similar.
- The machine is equipped with non-slip feet. Work surfaces often have varnished or plastic finishes and are treated with a variety of care products. Some of these may contain substances that react adversely to the feet of the appliance and soften them. If necessary, place a non-slip mat under the machine.
- The machine must not be exposed to temperatures below 4 °C. Water that remains in the heating system could freeze and cause damage.
- Sound pressure level <70 dB(A).

 We carefully check all our machines before they leave the factory, testing them using Qbo capsules and water. For this reason, despite thorough cleaning, you may still find minimal coffee or water residue in the machine. This is not a sign of poor quality - the machine is in perfect working order.


## At a glance (contents)



- \* Flashes white (water tank empty)
- \* Lights up red (machine requires descaling)

## Removing protective films and packaging materials

1. Take the machine out of the packaging.
2. Pull all protective films off the machine and remove all packaging materials.

 The packaging materials protect the machine during transport. Keep the packaging in case you need to transport the machine or send it in for repair if it suffers damage.

## Initial operation - prior to first use

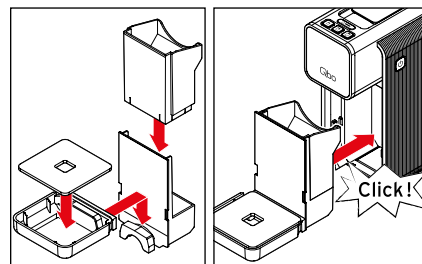
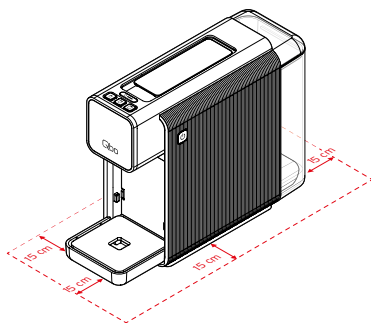
▷ Set up the machine ...

... in a horizontal position on a level worktop or surface that is not sensitive to moisture.

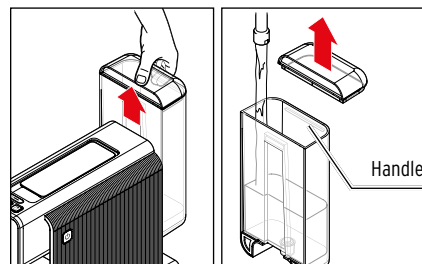
... near a power socket. The length of the connection cable is approx. 80 cm.

... at a distance of at least 1 m from hot, flammable surfaces (hobs, ovens, radiators, etc.).

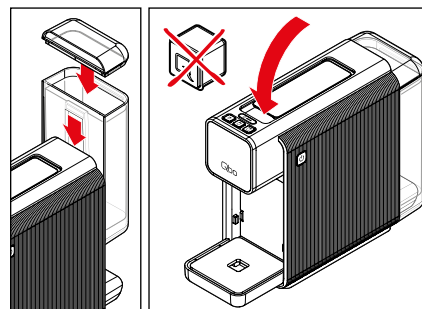
... at least 15 cm away from walls.




1. Assemble the leftover water tray, used capsule container and the drip tray with the cover as shown.
2. Slide the leftover water tray together with the used capsule container into the machine, pushing it as far as it will go. You must hear and feel it click into place.



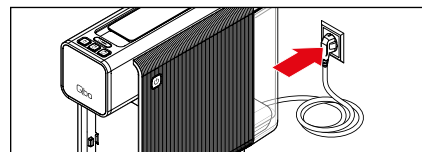
3. Pull the water tank straight up and out of the machine.
4. Fill the water tank up to the handle with fresh, cold tap water or drinking water.



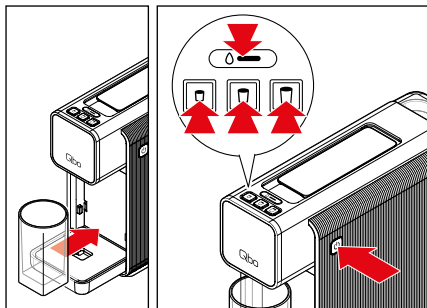
5. Lower the water tank back into the machine. Press the water tank down as far as it will go, so that it locates firmly in the machine.

 **Do not insert a capsule into the machine.**

6. If the capsule cover is open, press down the lever to close it.



7. Insert the mains plug into an easily accessible power socket.



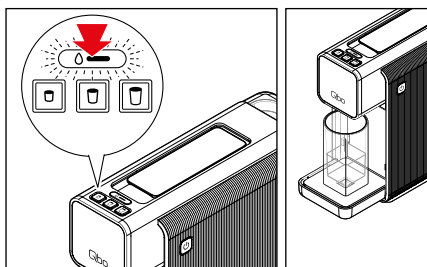
8. Place an empty cup or mug underneath the beverage spout.
9. Press any button to switch on the machine.



**WARNING -**  
risk of scalds/burns

Hot water or hot coffee coming out of the beverage spout can cause scalds.

- Do not touch the beverage spout during or immediately after use. Avoid coming into contact with the beverage coming out of the spout.



The Care button  flashes.




10. Press the Care button .





The pump starts to operate. As soon as the pipes are filled with water, the pump stops automatically.

A small amount of water runs into the cup or mug underneath the spout.

You will hear two beeps.

The machine then heats up to operating temperature.

The three beverage buttons , ,  are flashing.

As soon as the machine has heated up, you will hear a beep and the , , ,  buttons light up continuously.

Pour away the water that is in the cup or mug and rinse the machine by allowing 2 cups of water to flow through (without a capsule) as described in the chapter "Rinsing the machine". The machine is then ready for use.

## Rinsing the machine



**WARNING -**  
risk of scalds/burns

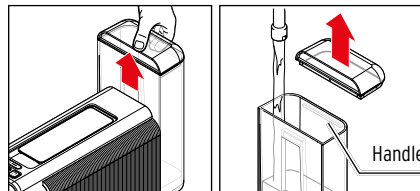
Hot water or hot coffee coming out of the beverage spout can cause scalds.

- Do not touch the beverage spout during or immediately after use. Avoid coming into contact with the beverage coming out of the spout.

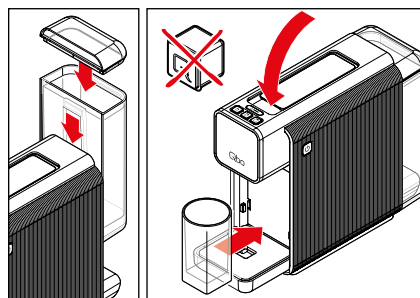
After switching the machine on for the first time, or if you have not used the machine for longer than 2 days, rinse the machine by allowing 2 cups of water to flow through (without a capsule).

Requirements:

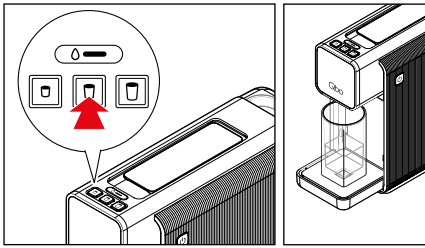
- The machine is switched on. The , , ,  buttons light up continuously.
- **There is no capsule inside the capsule feed.**



1. Pull the water tank straight up and out of the machine and fill it with fresh, cold tap water or drinking water up to the handle.

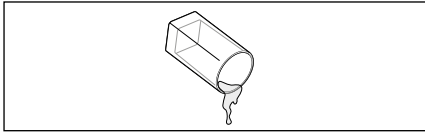


2. Lower the water tank back into the machine.
3. Place an empty cup or mug underneath the beverage spout.
4. If the capsule cover is open, press down the lever to close it.



5. Press the middle beverage button (caffè) ☕.

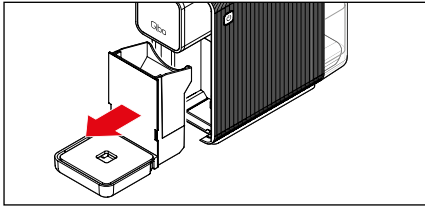
The pump will rinse the pipes with water, which will then flow into the cup or mug underneath. You will hear a beep at the end of the rinsing process.



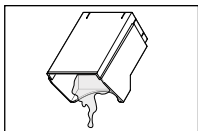
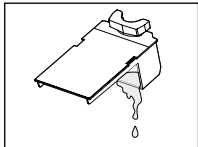
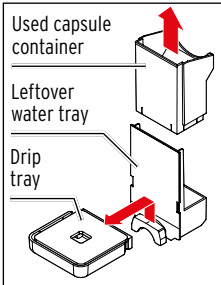
6. Pour the water away.

7. Repeat steps 3 to 6.

8. Finally, empty the leftover water tray and, if necessary, the used capsule container:

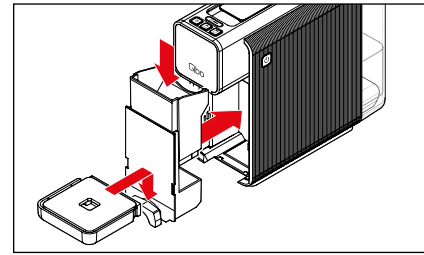


▷ Pull out the leftover water tray.



▷ Remove the used capsule container and the drip tray.

▷ Empty the leftover water tray and, if necessary, the used capsule container.



9. Reinsert all parts back into the machine.

## The finest aroma - the finest flavour

### One capsule per cup

Each capsule is portioned for one cup of caffè, caffè grande or espresso.

### Full-bodied aroma

Only insert a capsule when you intend to use the machine. The capsule is pierced as the lever is pushed down. If it is not used immediately, the aroma will fade.

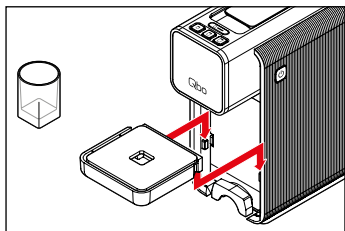
### Pre-heating the cup

Fill the cup with hot water and pour the water away shortly before using the cup. This will help your beverage taste its best.

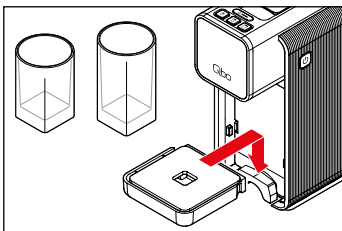
### Beverage strength

Adjust the strength of the beverage to suit your personal taste by adjusting the amount of water. This is very easy to do, and is described in the chapter "Adjusting beverage strength (beverage volume)".

## Using small / large cups or glasses



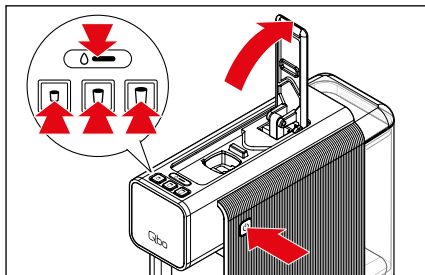
For small cups, use the drip tray as shown above.






For larger cups, tall glasses and mugs, insert the drip tray as shown above.




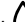
## Switching the machine on/off

### Switching the machine on

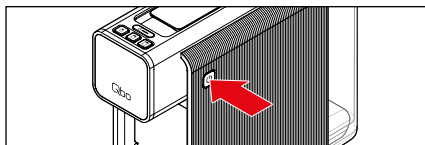



▷ Press any button or lift the lever up as far as it will go.

The three beverage buttons , ,  will flash.

As soon as the machine has heated up, you will hear a beep and the buttons , , ,  light up continuously.

### Switching the machine off



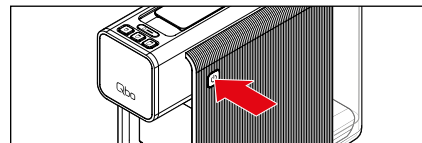
▷ Press the On/Off button .

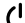
## Automatic switch-off

Always switch the machine to standby mode after use by pressing the On/Off button. The machine will then consume very little energy.

















If no button is pressed for about 9 minutes, the machine will automatically switch off. This is both a safety function and a way to save energy. You can choose between four lengths of time after which the machine will switch off automatically: 2 minutes, 9 minutes, 30 minutes or 120 minutes.

The different switch-off times can be set as follows:



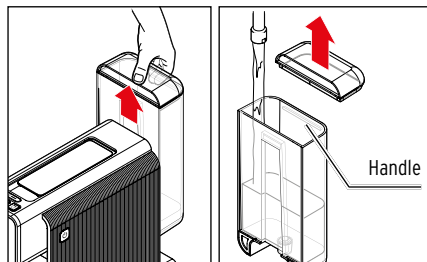
1. With the machine switched on, press and hold the On/Off button  for approx. 5 seconds. You will hear a beep.

One of the four buttons will light up continuously while the other three buttons will remain dark. The permanently illuminated button shows the current switch-off time:

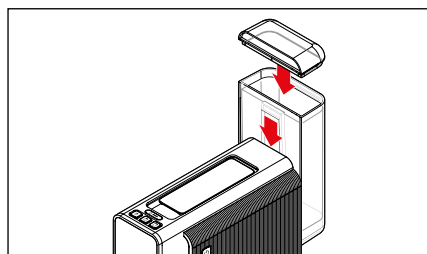
Machine off after 2 minutes (espresso button)				
Machine off after 9 minutes (caffè button)				
Machine off after 30 minutes (caffè grande button)				
Machine off after 120 minutes (Care button)				

2. Press the button with the desired switch-off time (two beeps will sound) or wait approx. 30 seconds to keep the displayed switch-off time.

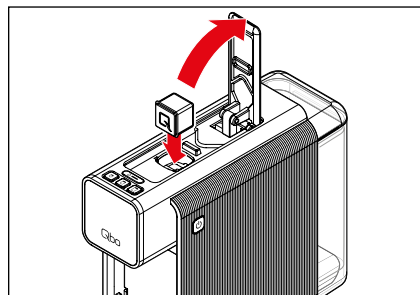
## Filling the water tank




1. Pull the water tank straight up and out of the machine.
2. Fill the water tank up to the handle with fresh, cold tap water or drinking water.

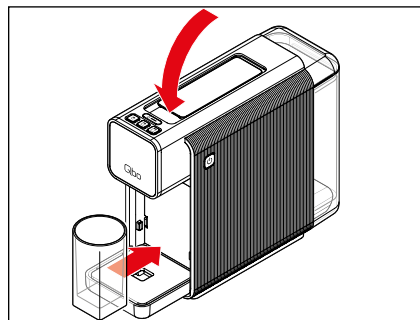


3. Lower the water tank back into the machine. Press the water tank down as far as it will go, so that it locates firmly in the machine.



1. Lift the lever up as far as it will go.
2. Insert a Qbo capsule into the machine. The "Q" on the capsule must be pointing forwards.

 The capsule must be intact: Do not pierce it and do not remove the capsule lid or insert a misshapen capsule!



3. Push down the lever completely. This pierces the base and lid of the inserted capsule.
4. Place an empty cup or mug underneath the beverage spout.

## Preparing beverages



**WARNING -**  
risk of scalds/burns

Hot water or hot coffee coming out of the beverage spout can cause scalds.

- Do not touch the beverage spout during or immediately after use. Avoid coming into contact with the beverage coming out of the spout.

Requirements:

- The machine is switched on. The     buttons light up continuously.
- The water tank is full.



**Espresso**



**Caffè**



**Caffè Grande**

5. Press the beverage button that corresponds to the capsule you have inserted.

The brewing process starts and stops automatically. The beverage button you pressed will flash.

The brewing process is complete when ...

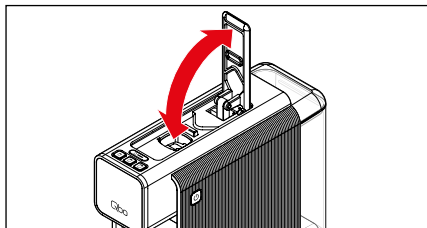
... you hear a beep.

... the     buttons light up continuously.

- ▷ If you would like to stop the brewing process prematurely, press the same beverage button again while brewing.

**i** Making espresso involves pre-brewing a small amount of espresso. This is to allow the flavours to develop fully. This process can be identified by the short pause at the beginning of the brewing process.

Caffè and caffè grande are made without pre-brewing.

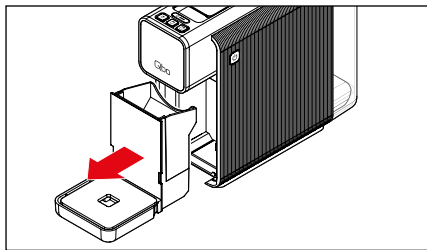


6. **After each brewing process, lift the lever up and push it down again** so the spent capsule is ejected into the used capsule container and does not stay in the machine. The used capsule container holds approx. 6 capsules.

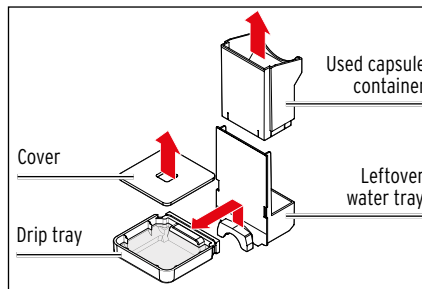
Preset beverage volume upon purchasing the machine:  
**espresso** approx. 40 ml | **caffè** approx. 125 ml | **caffè grande** approx. 180 ml

### After use

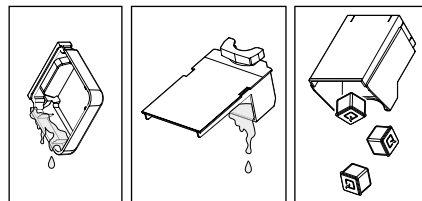
- ▷ Regularly empty the leftover water tray and used capsule container.



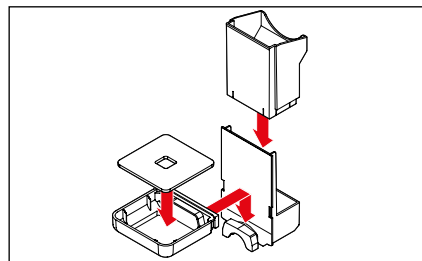
1. Pull out the leftover water tray.



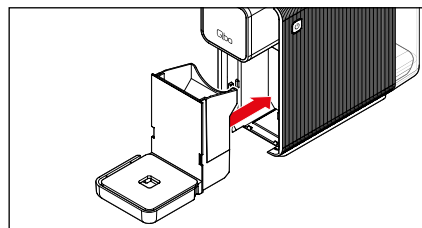
2. Remove the used capsule container and the drip tray together with its cover.



3. Empty the drip tray, the leftover water tray and, if necessary, the used capsule container. The used capsule container holds approx. 6 capsules.



4. Put all the parts back together ...



5. ... and push them into the machine as far as they will go.

## Adjusting beverage strength (beverage volume)

Adjust the strength of the beverage to suit your personal taste by adjusting the amount of water. You can do this for one specific brewing procedure or save the setting.

Requirements:

- The machine is switched on. The ☐, ☐, ☐, ☉ buttons light up continuously.
- There must be a cup or glass underneath the beverage spout.
- A capsule must be inserted.

### Adjusting the strength for the current brewing procedure (setting is not saved)

- ▷ If the beverage is too weak for your taste, you can stop the water flow prematurely by pressing the flashing beverage button.
- ▷ If the beverage is too strong for your taste, simply start the brewing process again without inserting a new capsule. Then press the flashing button again as soon as sufficient water has run through.

Preset beverage volume upon purchasing the machine:


**espresso** approx. 40 ml | **caffè** approx. 125 ml | **caffè grande** approx. 180 ml

The beverage volume can be set between approx. 25 and 280 ml.

### Setting a permanent beverage strength (setting is saved)


You can also permanently change the factory settings for beverage volumes. This enables you to make your favourite beverage every time at exactly the strength you prefer. Individual settings are possible for each of the beverage buttons (espresso, caffè and caffè grande):

1. Press and hold the respective beverage button.

 While you hold down the button, you will first hear a beep (for espresso, the machine stops briefly for the pre-brewing phase) before the beverage is finally dispensed.

2. Release the beverage button as soon as the desired amount of beverage has been dispensed into the cup.

When you release the button, the machine will save that amount. Two beeps sound in confirmation.

 If you hear five beeps, the new beverage amount could not be saved. In this case, repeat the procedure as previously described.

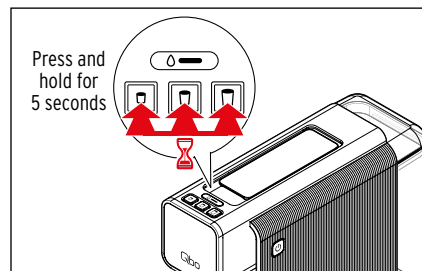
- ▷ If the newly set beverage amount does not suit your taste, simply repeat steps 1 and 2 with a new Qbo capsule.

## Restoring the factory settings

You can restore the original settings for the water amounts.

Requirements:

- The machine is switched on. The ☐, ☐, ☐, ☉ buttons light up continuously.



1. Press and hold the three beverage buttons ☐, ☐, ☐ at the same time for approx. 5 seconds.

Two beeps will sound as confirmation and the three beverage buttons ☐, ☐, ☐ will flash.

2. Release the beverage buttons.

The factory settings for the water amounts have been restored. The machine will then restart. Initial commissioning starts. Proceed as described in the chapter "Prior to first use".

## Cleaning - removing coffee residue in the machine with Qbo cleaning capsules



**WARNING** - damage to health due to cleaning solution

- Do not interrupt the cleaning process; otherwise, cleaning solution may be left behind in the machine. If the cleaning process does happen to be interrupted, the machine must be rinsed thoroughly before you use it again in order to avoid health hazards. The machine will not be able to brew coffee again until the process is completed.



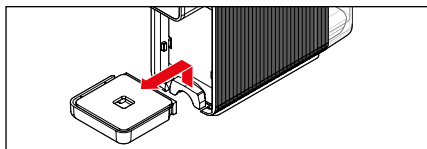
Coffee oil residue gathers in the brewing chamber and on the beverage spout as part of normal use. The Qbo cleaning capsules remove this residue. This helps your coffee taste genuinely and consistently good.

With average coffee consumption, the machine should need cleaning about once a month with a Qbo cleaning capsule.

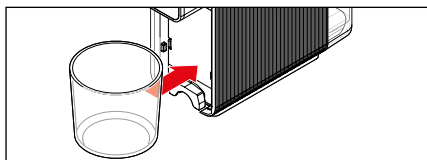
### The cleaning process takes approx. 5 minutes.

Requirements:

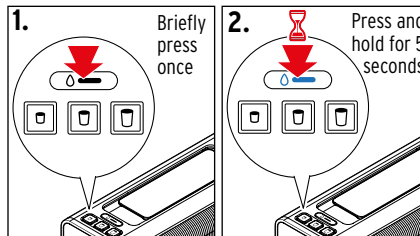
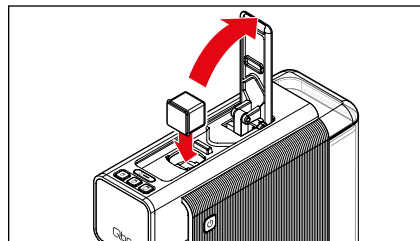
- The machine is switched on. The ☐, ☐, ☐, ☐ buttons light up continuously.
- The water tank is filled up to the handle.



1. Remove the drip tray.



2. Place an empty container with a capacity of at least 600 ml under the beverage spout.



The machine pumps a total of approx. 600 ml cleaning solution through the pipes at several short intervals.

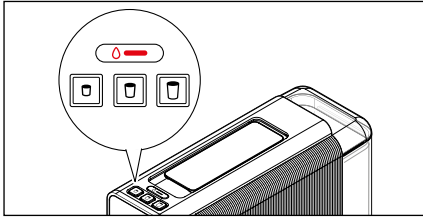


Keep an eye on the container and empty it before it overflows.

Afterwards, the machine will automatically switch off.  
The cleaning process is completed.

3. Lift the lever up as far as it will go.
4. Insert a Qbo capsule into the machine.
5. Push down the lever again completely. The base and lid of the capsule you have inserted are now pierced.
6. Press the Care button ☐ once briefly.  
The Care button ☐ lights up blue.
7. Press and hold the Care button ☐ for approx. 5 seconds until the cleaning process starts.  
The Care button ☐ flashes.

## Descaling



If the Care button lights up **red** continuously, the machine needs to be descaled. Do this within the next couple of days. Do not wait any longer, otherwise so much limescale may collect that a descaling agent will no longer have any effect.

**Descaling takes approx. 30 minutes.**

**CAUTION** – damage to the machine due to limescale deposits

• **Descale the machine as soon as it indicates that this is necessary (after approx. 40 litres).**

This increases machine service life and saves energy.

• Do not use any descaling agents made on the basis of formic acid.

• Use a standard, liquid, descaling agent suitable for coffee and espresso machines. Other agents may damage materials in the machine and/or have no effect.

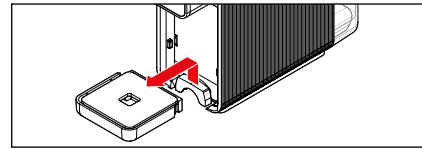
**i** • The descaling process cannot be interrupted. If the descaling process is interrupted (e.g. due to a power cut), it must be completed immediately once the machine is switched on again. The machine will not be able to brew coffee again until the process is completed.

• If you do not descale, the Care button remains red every time the machine is switched on until the machine has been descaled.

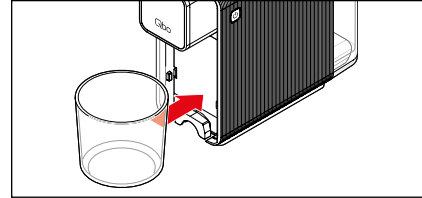
• **If you want to carry out the descaling process in between** (before the Care button lights up red), press the Care button twice until the button lights up red. To do this, proceed as described.

Requirements:

• The machine is switched on. The ☐, ☐, ☐, ☐ buttons light up continuously.

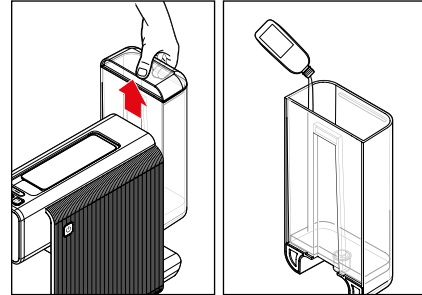


1. Remove the drip tray.



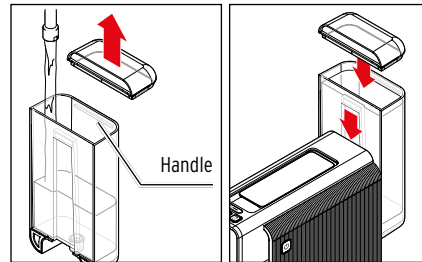
2. Place an empty container with a capacity of at least 600 ml under the beverage spout.

**i** If you use a small container, you will need to empty it several times during the descaling process.



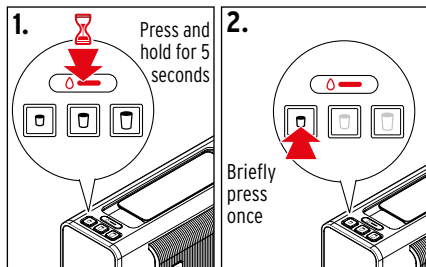
3. Remove the water tank from the machine.

4. Pour a standard, liquid, descaling agent suitable for coffee and espresso machines into the empty water tank.

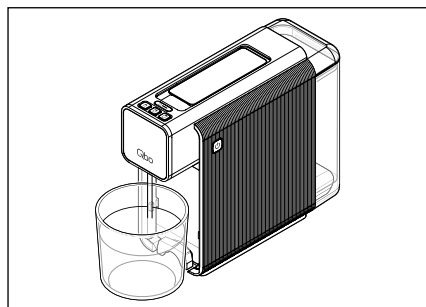


5. Add water up to the handle.

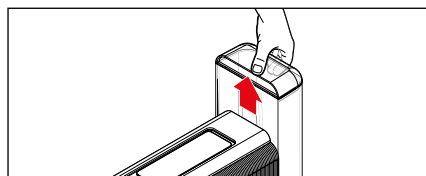
6. Reinsert the water tank into the machine.



The descaling process begins.  
The left beverage button ☐ (espresso) goes out.  
The Care button ⏱ flashes.



The Care button ⏱ and the middle beverage button ☐ (caffè) light up continuously.



The machine will now move on to the rinsing phase in order to rinse out any descaling residue from the pipes.

7. Press and hold the Care button ⏱ for approx. 5 seconds to start the descaling process.

The Care button ⏱ and the left beverage button ☐ (espresso) light up continuously.

8. Press the left beverage button ☐ (espresso).

The machine pumps the descaling solution into the pipes several times in 2.5-minute intervals.

**The procedure takes approx. 25 minutes.**

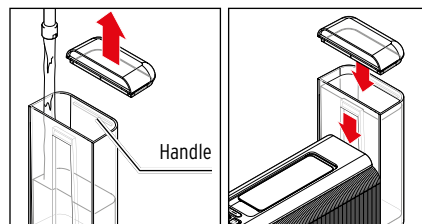
**When the descaling solution has run through, the machine stops operating for about 2.5 minutes.**

9. Wait until you hear a beep.

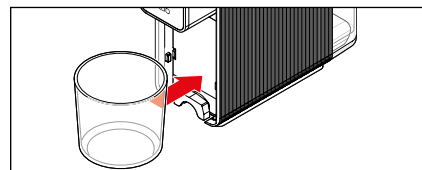
10. Remove the water tank from the machine.

11. Wash the water tank with water and a little washing-up liquid. Dry the tank thoroughly.

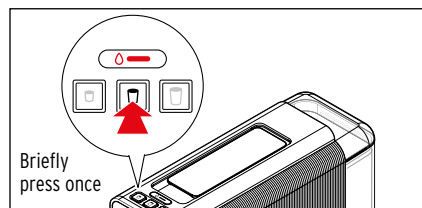
## Rinsing phase



12. Fill the water tank with tap water up to the handle and place it back in the machine.



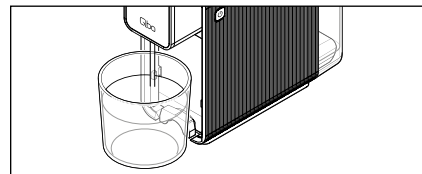
13. Place an empty container with a capacity of at least 700 ml under the beverage spout.



14. Press the middle beverage button ☐ (caffè).

The rinsing phase will begin.

The middle beverage button ☐ (caffè) goes out.  
The Care button ⏱ flashes.



The machine pumps tap water through the pipes to purge any residues of the descaling solution.  
**The procedure takes approx. 2 minutes.**

Afterwards, the machine will automatically switch off.  
The descaling process is complete.

## Machine care



**DANGER** - risk of fatal electric shock

Electric shock can cause serious injuries and/or death.

- Remove the mains plug from the power socket before cleaning the appliance.
- Never immerse the appliance, mains plug or connection cable in water or any other liquids.
- Do not clean the machine with a water jet. Clean it only as described in the following instructions.

**NOTICE** - material damage

Incorrect cleaning or lack of cleaning can damage the machine.

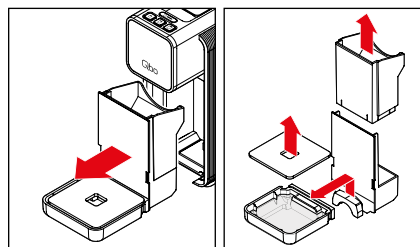
- Do not use any caustic, aggressive or abrasive products for cleaning.

	Daily	Weekly	As required
Machine housing		X	X
Cleaning the water tank		X	X
Rinsing the water tank	X		X
Used capsule container, leftover water tray	X		X
Cover, drip tray	X		X

### Cleaning the water tank

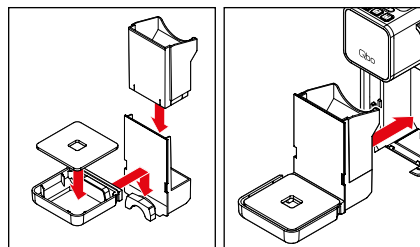
- ▷ Clean the water tank in water with a little washing-up liquid. Then rinse it out thoroughly under running water and dry it.  
**The water tank is not dishwasher-safe.**

### Cleaning the leftover water tray, drip tray and used capsule container



1. Pull the leftover water tray out of the machine and disassemble all the parts as shown.
2. Empty the used capsule container and the leftover water tray.
3. Wash all parts with water and washing-up liquid. Dry all parts thoroughly.

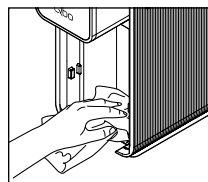
**None of the parts are dishwasher-safe.**



4. Reassemble all the parts and push them into the machine as far as they will go.

### Cleaning the housing

- ▷ Wipe the housing with a soft, damp cloth.




- ▷ Wipe the compartment for the used capsule container and the receptacle for the water tank as required using a soft, damp cloth.


## Problems / solutions

When the machine is switched on for the first time, the pump tries in vain to pump water into the pipes.


Is a capsule already inserted?

When the machine is switched on for the first time, there should be no capsule in it.


1. Remove the capsule if necessary.
2. Press the Care button again .  
The pump will now try once more to fill the pipes with water.
3. If this is not successful, repeat step 2 (see above) and while the water is being sucked in, briefly pull out the water tank several times and immediately reinsert it as far as it will go to support the pump during the suction process.

The machine stops operating during beverage preparation, cleaning or descaling and the Care button  flashes white.


Is the water tank empty?

1. Fill the water tank with fresh water and place it back in the machine.
2. Press the Care button .  
The process that was started before will continue.

Has the machine overheated?


If the machine is operated for a prolonged period it can overheat, causing the pump to be switched off as a protective measure. Meanwhile the Care button  will continue to flash white.

- ▷ Wait approx. 30 minutes, then the machine will have reached normal operating temperature again and is ready for use.


The Care button  lights up red continuously after switching on.

The machine needs to be descaled.



- ▷ Proceed as described in the chapter "Descaling".

The three beverage buttons  are flashing.

Was the lever lifted up before the end of the brewing process?

1. Push down the lever completely.
2. Press one of the three beverage buttons .

The brewing process continues and completes.

 Do not lift the lever until the brewing process is complete or the three beverage buttons  light up continuously again.

The Care button  and the three beverage buttons  are flashing.

Is the machine's lever pushed down as far as it will go?

- ▷ Push down the lever as far as it will go.

The beverage is not hot enough.

Especially in the case of espresso, the amount of coffee is so small compared to the size of the cup that it cools down quickly.

- ▷ Fill the cup with hot water and pour the water away shortly before using the cup.

This will help your beverage taste its best.

## Declaration of Conformity

Tchibo GmbH hereby declares that this product is in compliance with the essential requirements and other relevant provisions of the following directives at the time of its being placed on the market:

- 2006/42/EC - Machinery Directive
- 2014/30/EU - EMC Directive
- 2009/125/EC - Ecodesign Directive
- 2012/19/EU - WEEE
- 2011/65/EU - Restriction of the use of certain hazardous substances in electrical and electronic equipment



Enter the product number in the search box at [www.tchibo.de](http://www.tchibo.de) - you will be directed to the product page where you can download the full declaration of conformity.

## Warranty

Tchibo GmbH grants a **24 month warranty** from the date of purchase.

Tchibo GmbH, Überseering 18, 22297 Hamburg, Germany

We will remedy all defects in workmanship or materials **within the warranty period**. In order for the warranty to be granted, all warranty claims must be accompanied by proof of purchase from Tchibo or from an authorised Tchibo distribution partner. This warranty is valid within the EU, Switzerland and Turkey.

**The warranty does not cover** worn parts, consumables, or damage resulting from improper use or inadequate descaling.

Parts and consumables can be ordered from our Qbo service team.

This warranty does not restrict **statutory warranty rights**. Statutory warranty rights can be asserted free of charge.

## Service and repair

If, contrary to our expectations, a defect is found, please contact our Qbo service team. Our customer consultants will be happy to advise you on further procedure.

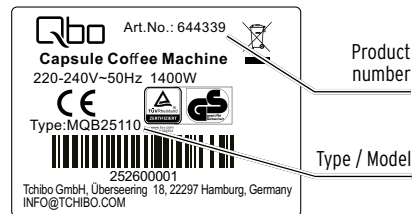
If you have any questions relating to product information, ordering accessories or servicing, please contact our Qbo service team.

Please have the product number to hand in case of any queries.

## Qbo service team

Email: [service@tchibo.de](mailto:service@tchibo.de)

## Product number



You can find your Qbo's product number on the type plate on the bottom of the casing. Before laying the Qbo on its side, remove the drip tray and water tank.

Place a cloth or mat underneath to protect surfaces from any residual coffee or water that may leak out.